

JOJU MON
WAS
STANDING
HERE
HOW COULD
JOJU MON
ESCAPE?? ? ? ! ! !

JOHN PAUL WAS STANDING
HERE, JUST BEFORE INCIDENT
TOOK PLACE

PART LINE
POSITION

JOHN PAUL
WAS
STANDING
HERE





Pipe line





BROKEN SPOOL
OF PIPE LINE

PSV pilot line
snapped

FROM
WEST SEP
RE HEATER
↓
↑
NEW SIDE

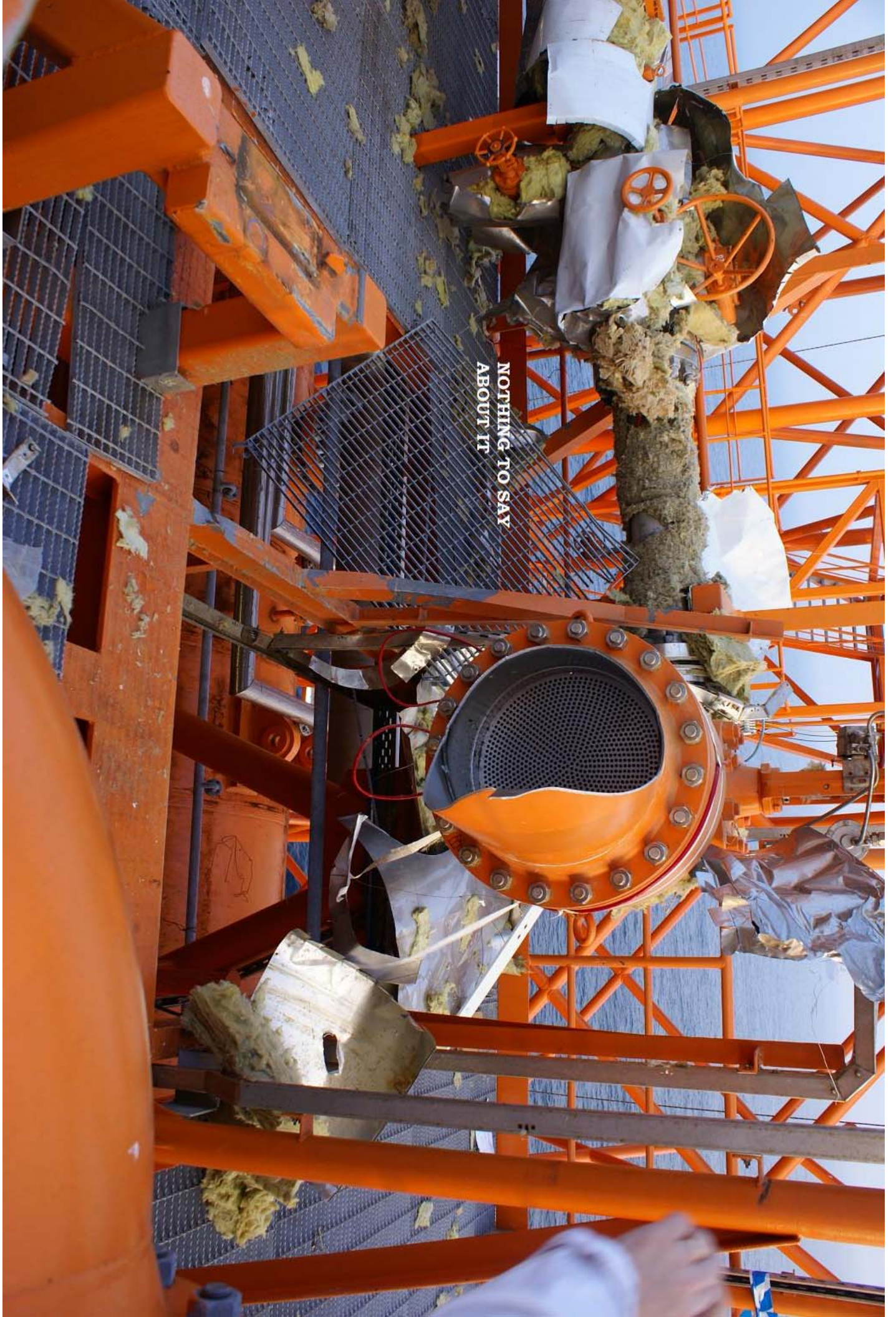


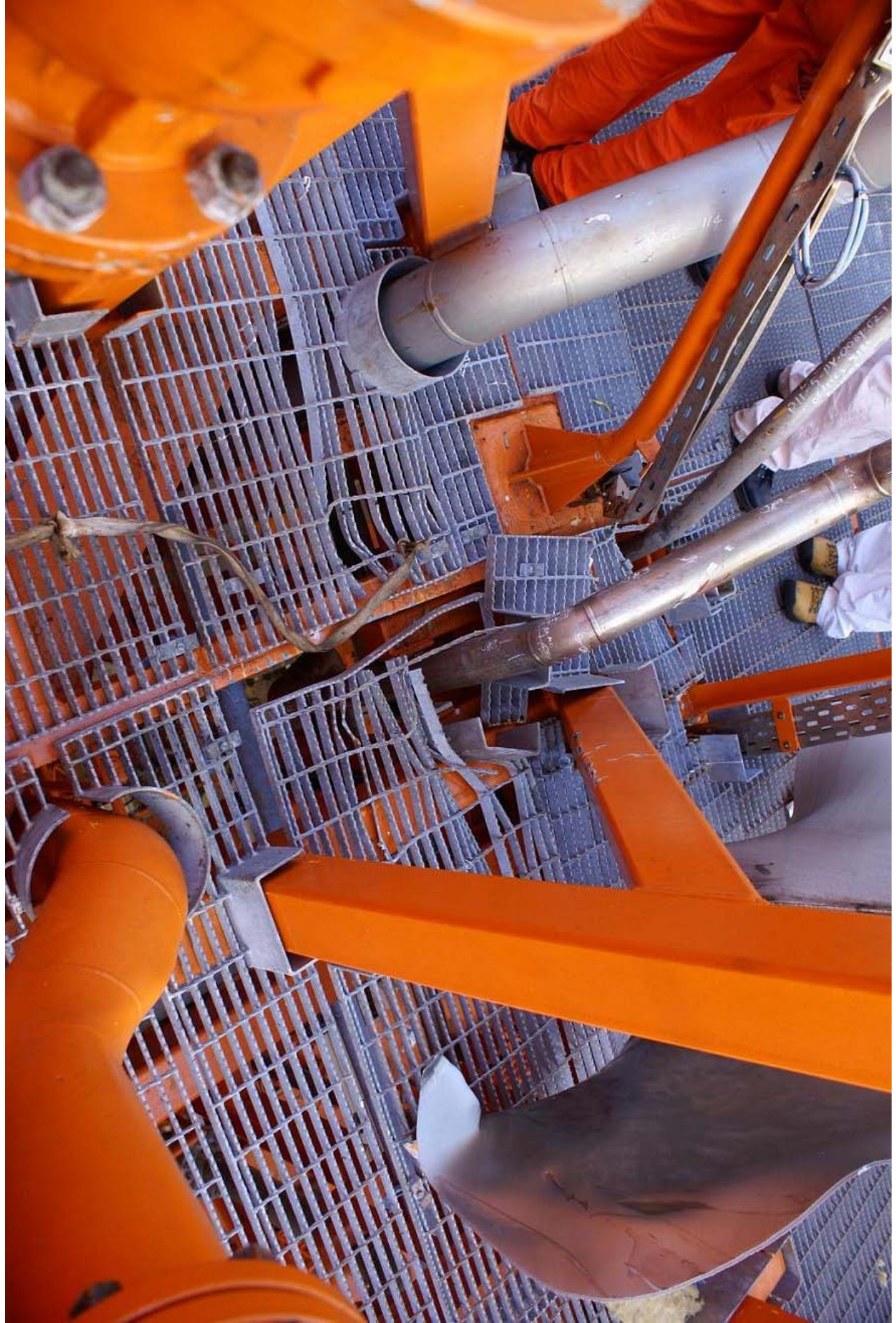
**PSV DOWN
STREAM LINE
TEST SEP PRE
HEATER**

**RUPTURE DISC LINE
(TEST PRE HEATER)
DAMAGED**



NOTHING TO SAY
ABOUT IT

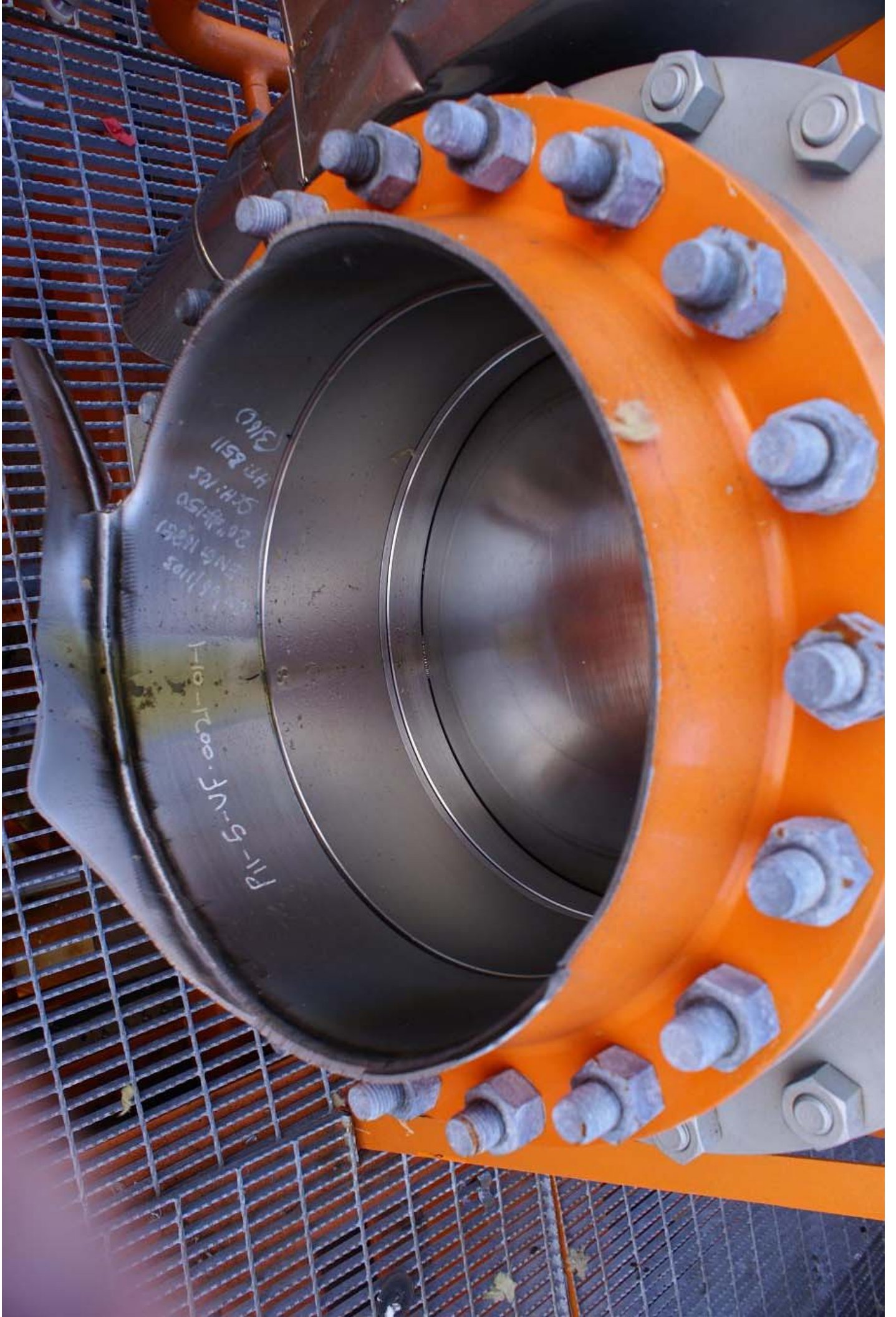




**MISSING LIGHT WELL ABOVE
FROM EXPLOSION AREA**







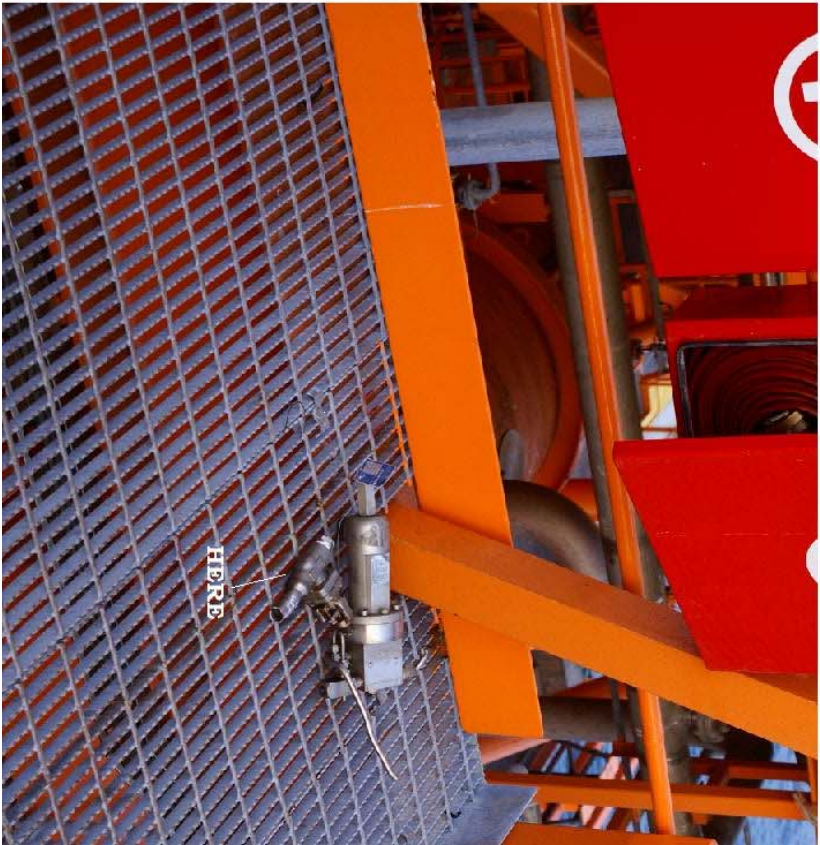
PI-5-VF
1-10-2000
3/10
1152-44
47-2511
24" x 150
20" x 150
1520-1521
1521-1521

JOUJUMON'S HEAD SET





REMAINING PART WAS ABOUT
FEW METER AWAY



HERE

Area the blast occurred







NO PIPE LINES ANY MORE