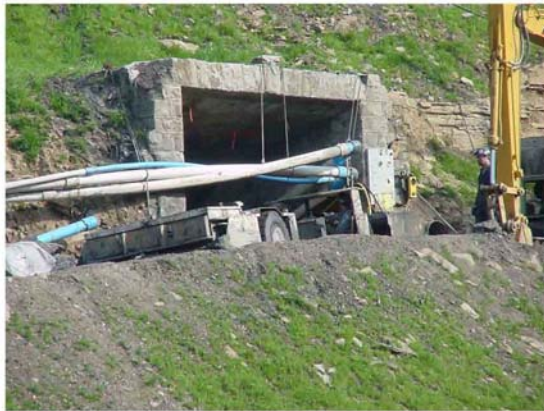


# INFORMATIONAL BULLETIN

## PREVENTING INJURIES AND DEATHS OF FIRST RESPONDERS ON MINE SITES

Police, firefighters and emergency medical personnel often respond to mine site emergencies. Mine and MSHA personnel are normally present during efforts to rescue or recover victims from such accidents. However, should an accident occur in a location remote from other mining activity, on rare occasions, police, firefighters, or emergency medical personnel may be the first to arrive at the accident scene.



### RECOMMENDED ACTIONS

- Police, firefighters, and emergency medical services should implement and review occupational safety programs and standard operating procedures to address unique hazards encountered at mining operations.
- First responders must assess the incident scene prior to rescue or recovery efforts.
- Specialized training in mining hazards should be provided to first responders.
- Mine operators should conduct pre-incident planning with their local police, firefighters, and emergency medical providers.
- Federal regulations [30 CFR 75.1713-1, 77.1702 (Coal) and 56/57.18014 (Metal Nonmetal)] require mine operators to make advance arrangements with emergency medical service providers. Mine operators should assure that first responders are not exposed to hazards and, as appropriate, accompanied by experienced mine personnel.

