

September 9, 2011

CRANE OVERTURNS IN SCOTLAND

CRANE OVERTURNS IN SCOTLAND

- ✘ A crane overturned at the Port of Invergordon on 9th September 2011
- ✘ The accident occurred around 3pm while Ainscough was apparently relocating its 550 tonne truck mounted crane
 - + The Liebherr LG1550 is a very versatile lattice boom mobile crane which has a maximum capacity of 550 tonnes and can lift to heights of up to 180m. The flexibility comes from the range of boom options available including two types of luffing fly jib, and a derrick
 - + The crane has four of the eight axles fitted with twin tyres meaning that 24 wheels can carry the load of the crane enabling it to move on site with much of the equipment and ballast loaded
 - + Cost: £8m approx
- ✘ It seems at this time that whilst the crane was being traveled to another location the outriggers were pulled in to pass an obstruction but were not re-extended
- ✘ The camber changed in the road, and over she went
- ✘ Thankfully no one was injured in the incident
- ✘ Technip's Apache II was tied up alongside at the time









































AINSCOUGH
CRANE HIRE LTD
01772 450400
HUMBERSTONE















CRANE OVERTURNS IN SCOTLAND

- ✗ The boom came down onto the cab of the 100 tonne Terex Demag telescopic All Terrain crane, owned by Global Logistics that was working alongside demolishing its carrier cab





AINSCOUGH

TEREX

OU09 GLK

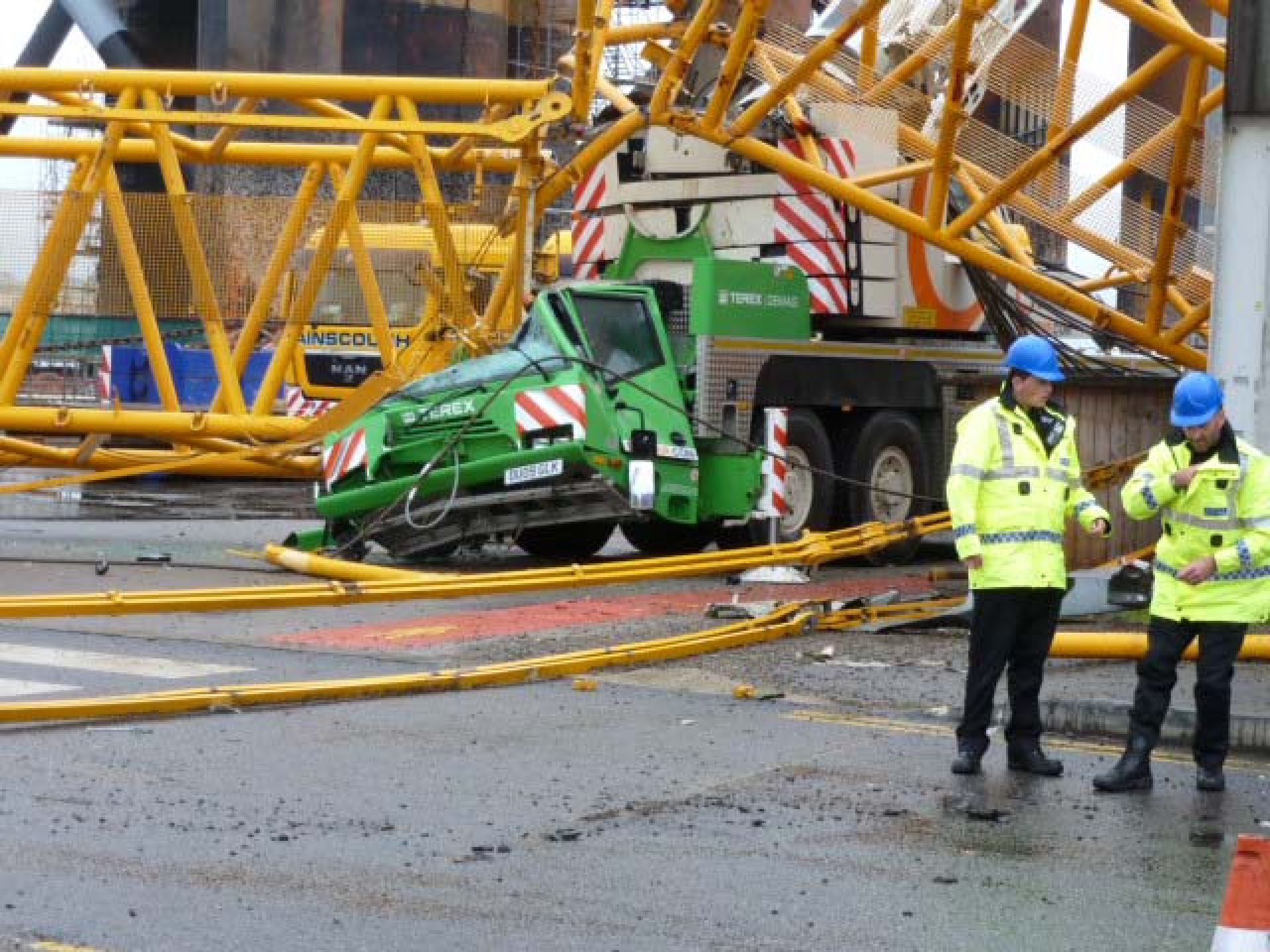
















TEREX / DEMAG

 **GLOBAL
LOGISTICS**
TEL: 01349 855110
GEGROUP.COM





GLOBAL LOGISTICS
GEGROUP.COM

TEREX | DEMAG

GLOBAL LOGISTICS
TEL: 01349 855110
GEGROUP.COM

0U09 GLK

TEREX

