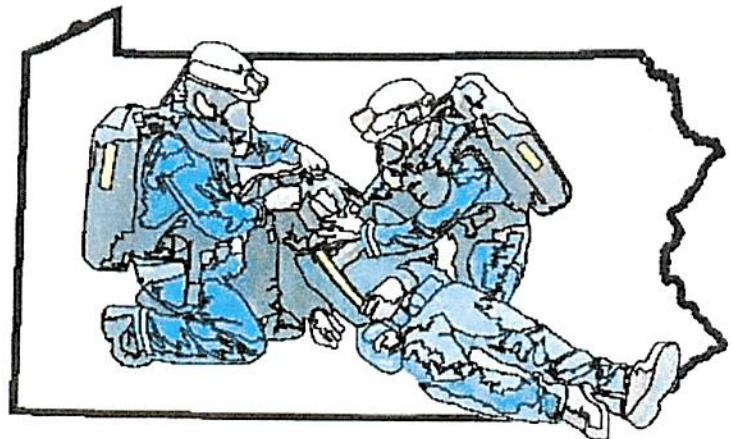


**2024**

**Pennsylvania  
PBSA  
Contest**

Mine Rescue  
Contest  
Day 2



July 16, 2024

## Day 2 Statement

Thank you for responding to our call for help. Last night a four-man crew went into the mine to perform some maintenance work. We have not been able to contact any of the crew and the check in board shows that they are still in the mine. The mine has a history of poor roof conditions, high methane accumulations and water accumulations. There is a backup mine rescue team here to assist you. Please help us to find our missing miners.

## PA 2024 Day 2 Problem

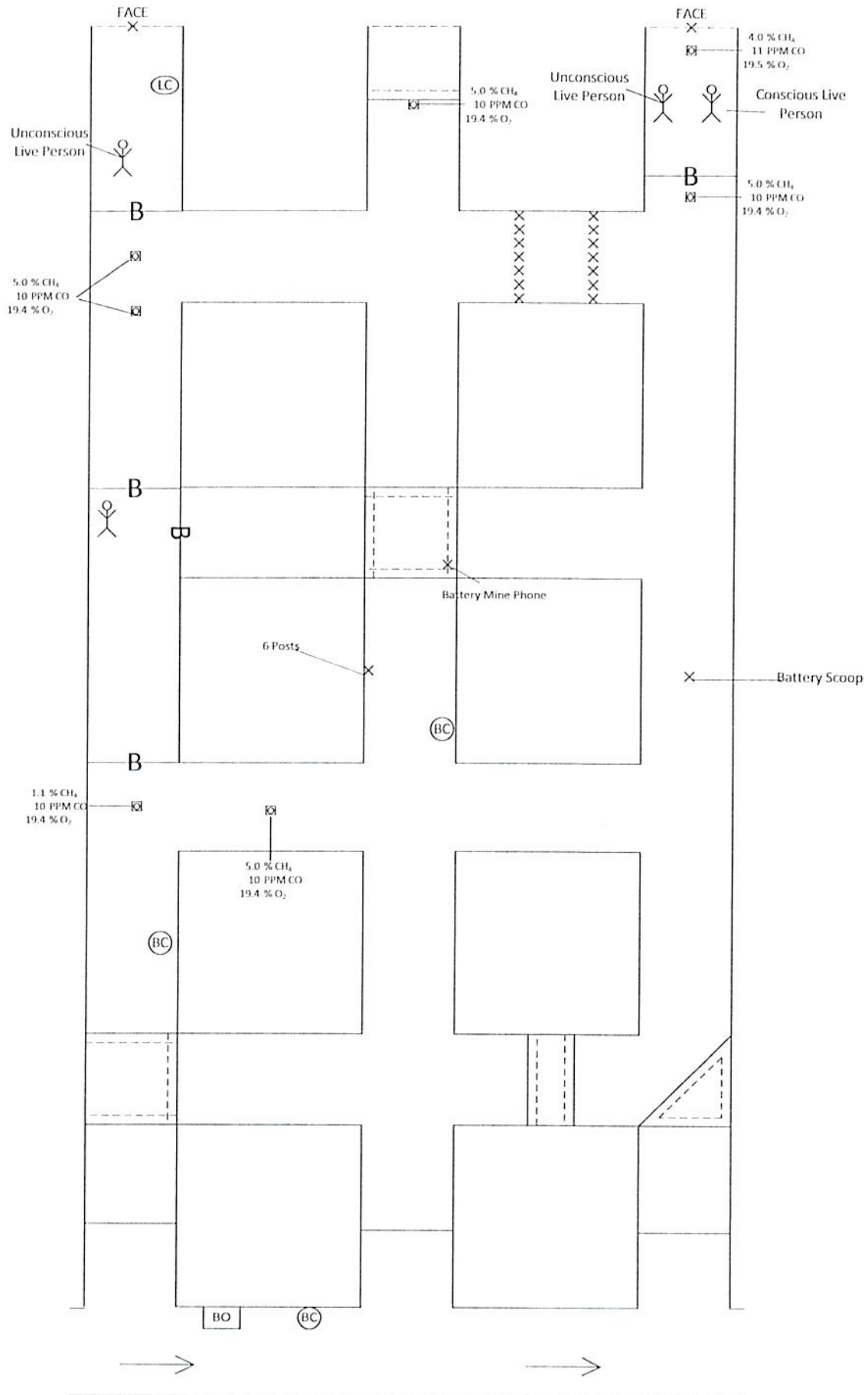
- The mine is ventilated with a blowing fan that cannot be stopped, stalled or reversed.
- Locate the missing miners and bring survivors to the fresh air base.
- Teams may only carry two brattice cloths at a time.
- Explore all areas of the mine if it can be done safely.
- The mine maps are not up to date.



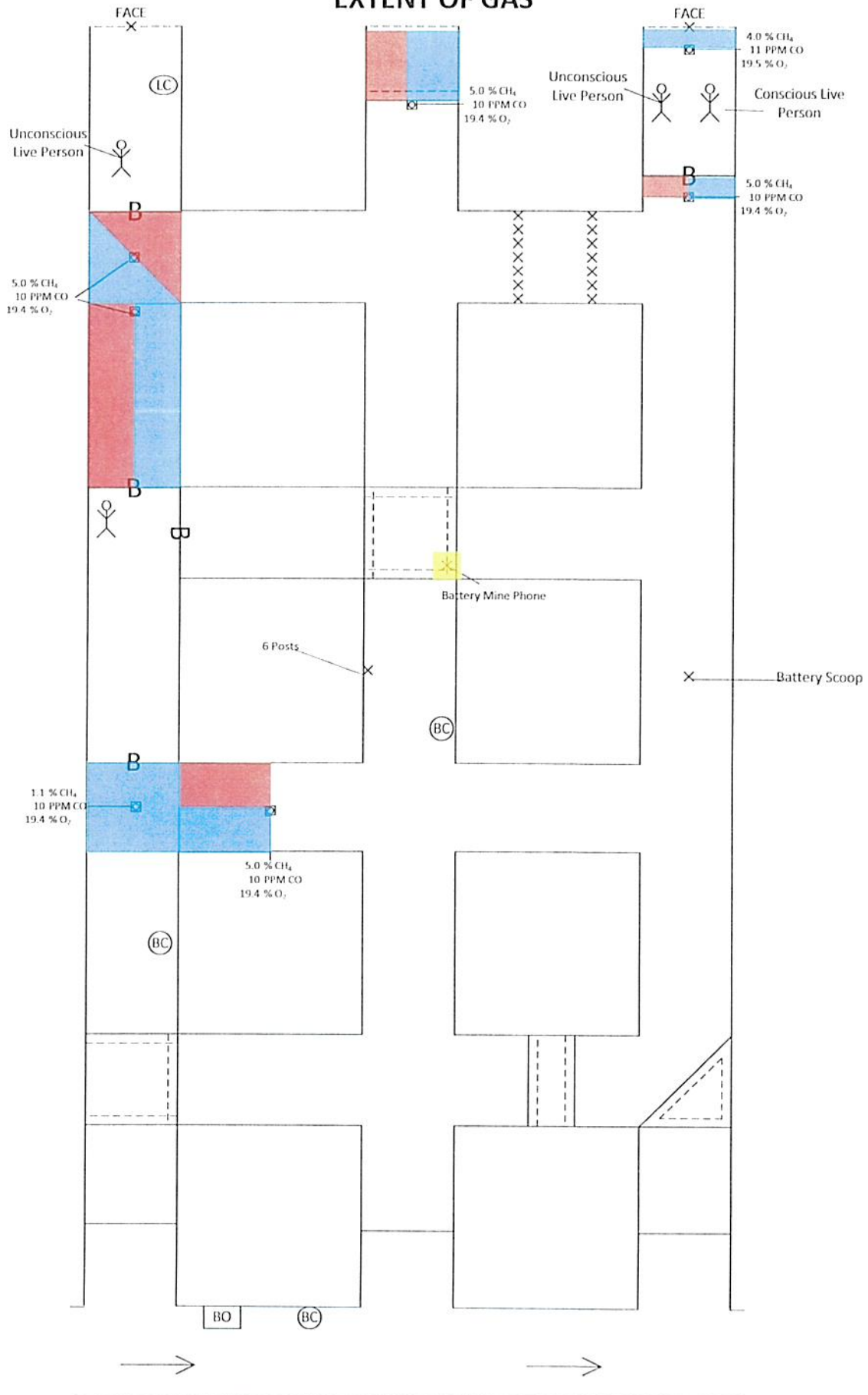
# 2024 PA Contest Day #2 Problem Keys

- Between the fresh-air base at A x-cut the captain must date and initial the temporary stoppings in all three entries. When the captain airlocks into #1 entry he must do a gas test immediately after opening the temporary stopping. The captain must perform a roof & rib test and date and initial at the unsafe roof. When the captain airlocks into #3 entry he must do a gas test immediately after opening the temporary stopping. The captain must perform a roof & rib test and date and initial at the unsafe roof.
- Team stop #1 must be at #2A intersection. The team must perform their 50-foot apparatus check at this stop. The captain must perform a roof & rib test and date and initial at the unsafe roof lines from #2 to #1 and #2 to #3 entries. A gas test is required in all three directions outside of the intersection.
- Team stop #2 must be in the #2B intersection. A gas test is required in all three directions outside of the intersection. The captain must perform a roof & rib test and date and initial at the unsafe roof. The gas box located between #2 and #3 entries forces the teams next stop to be in #1B intersection.
- Team stop #3 the captain must date and initial the barricade and check for a response behind the barricade. There is a response behind the barricade of help get me out. The captain must perform a roof & rib test and date and initial at the unsafe roof. A gas test is required outby #1B intersection. The teams have a means to ventilate the gas from in front of the barricade and must set up and ventilate immediately or receive a discount for delay of patient. See vent #1 for builds required.
- The team will be required to short circuit the air at the fresh-air base prior to air locking into the barricade. A stopping built anywhere outby in #1 entry will suffice as an airlock. When the team breaches the barricade, the captain must immediately make a gas test. The patient is located in the #1C intersection and cannot be reached by the team since it exceeds the two x-cut limit.
- Team stop #4 must be in the #3B intersection. A gas test is required inby and outby the intersection.
- Team stop #5 must be in the #3A intersection. The captain must perform a zig-zag roof & rib test of the intersection and date and initial the unsafe roof in the intersection prior to any other team member entering the intersection. The captain must perform a roof & rib test and date and initial at the unsafe roof between #3 and #2 entries of A x-cut.
- Team stop #6 must take place at the #1C intersection. The team must immediately remove the patient to the fresh-air base. The captain must check the barricades in the intersection for a response. The captain must date and initial both barricades. No response is given. A gas test must be performed in the intersection.
- Team stop #7 must be in the #3C intersection. A gas test is required in both directions from the intersection. The captain must perform a roof & rib test and date and initial the unsafe roof.
- Team stop #8 will be in the #3D intersection. A gas test is required in both directions from the intersection. The captain must perform a roof & rib test and date and initial the caved area. The captain must date and initial the barricade and check for a response. The response behind the barricade is help get me out my buddy is not doing well. Because of the irrespirable gas immediately in front of the barricade the teams must continue to explore.
- Team stop #9 must be in the #1D intersection. A gas test is required in the intersection and in the x-cut. The captain must date and initial the barricade and check for a response inside of the

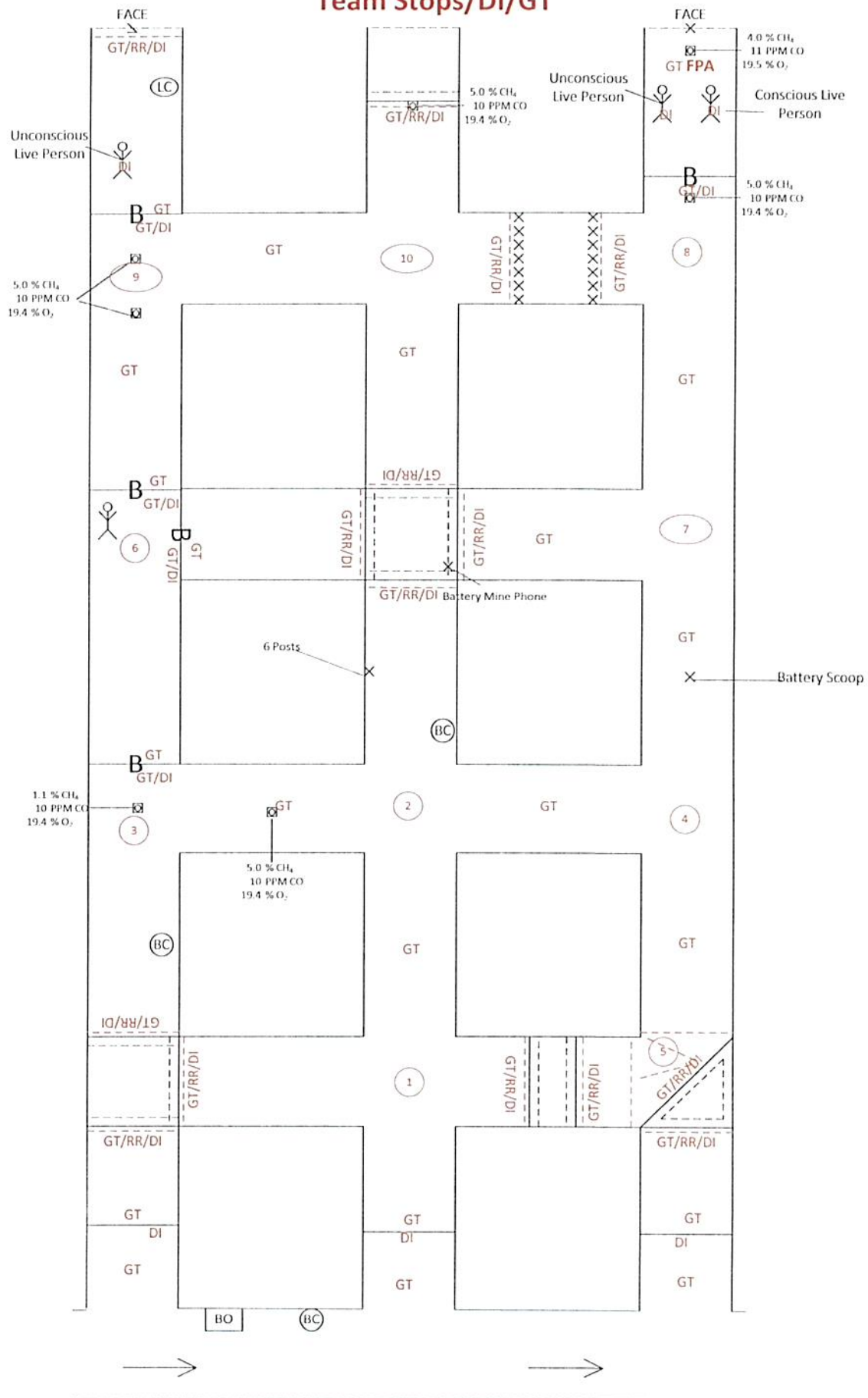
# DAY 2



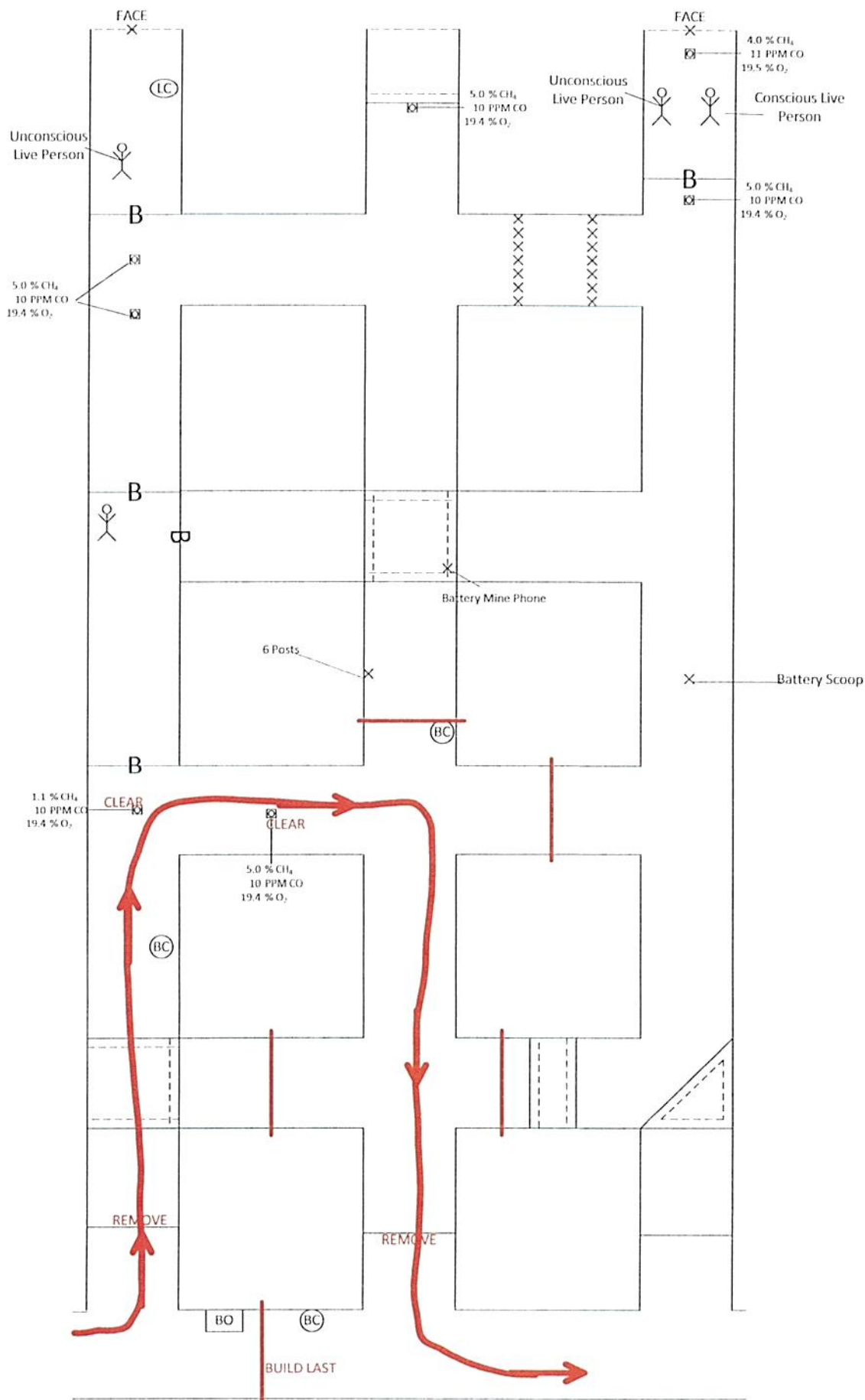
# DAY 2 EXTENT OF GAS



### Team Stops/DI/GT

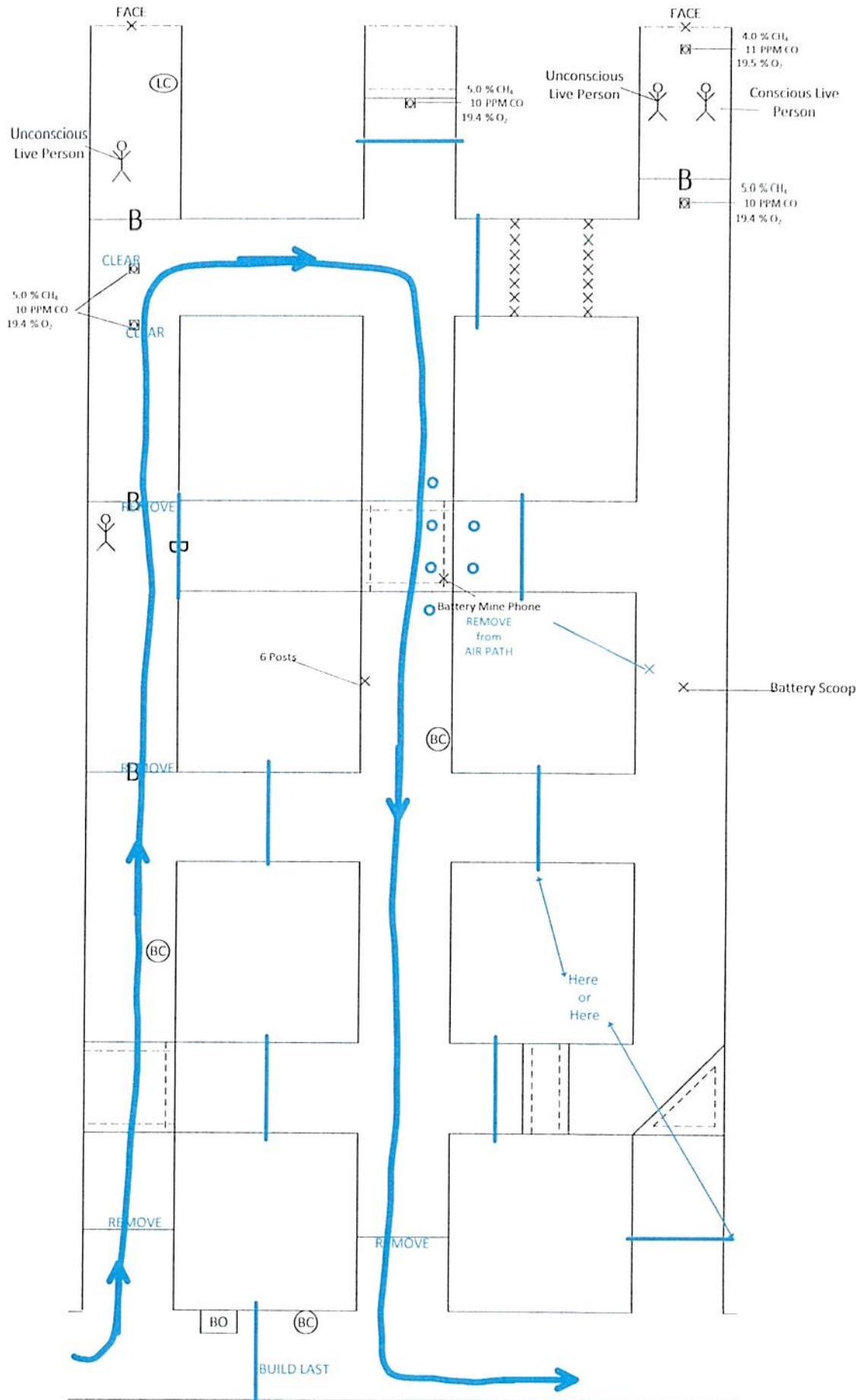


# DAY 2 VENT 1

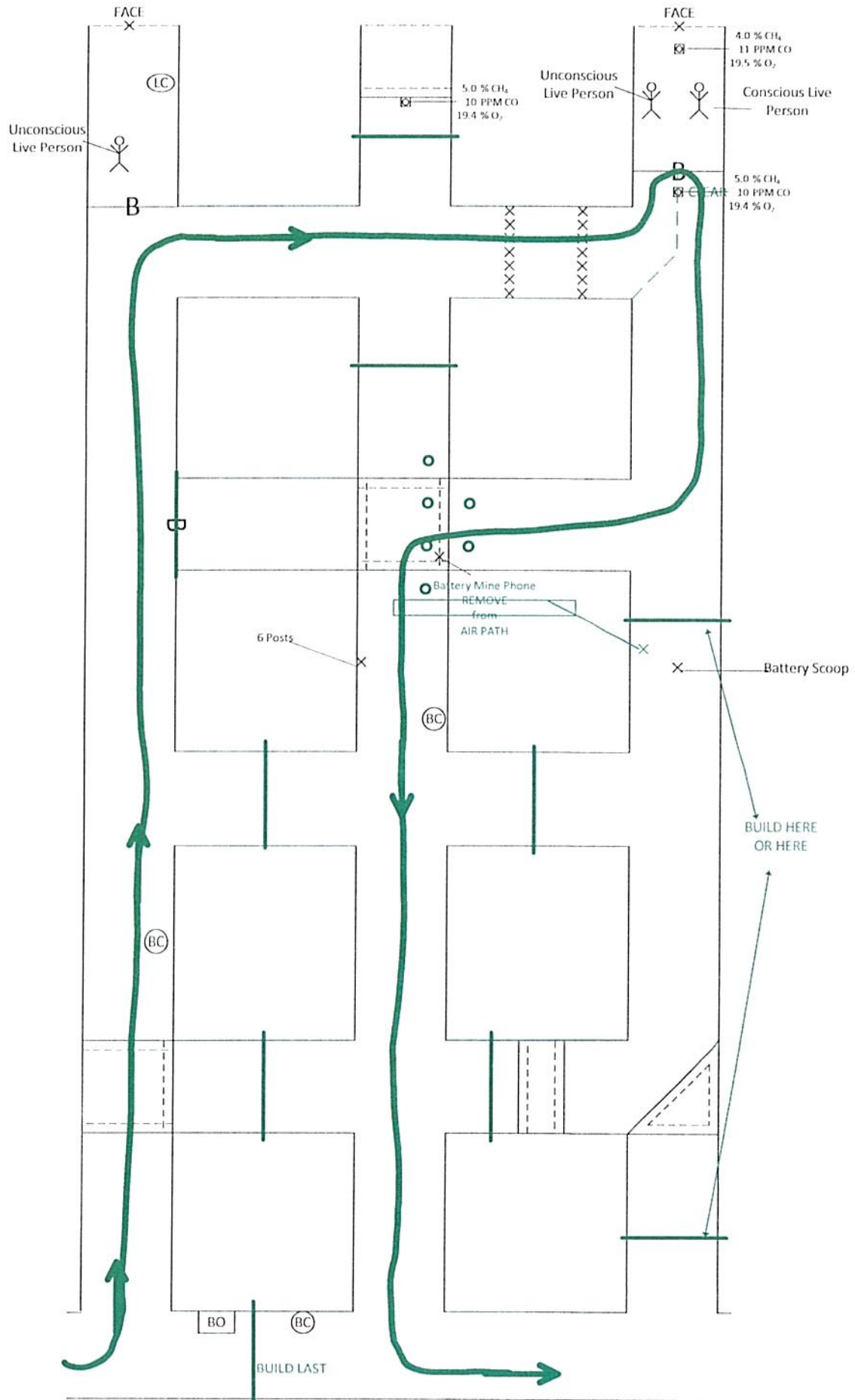




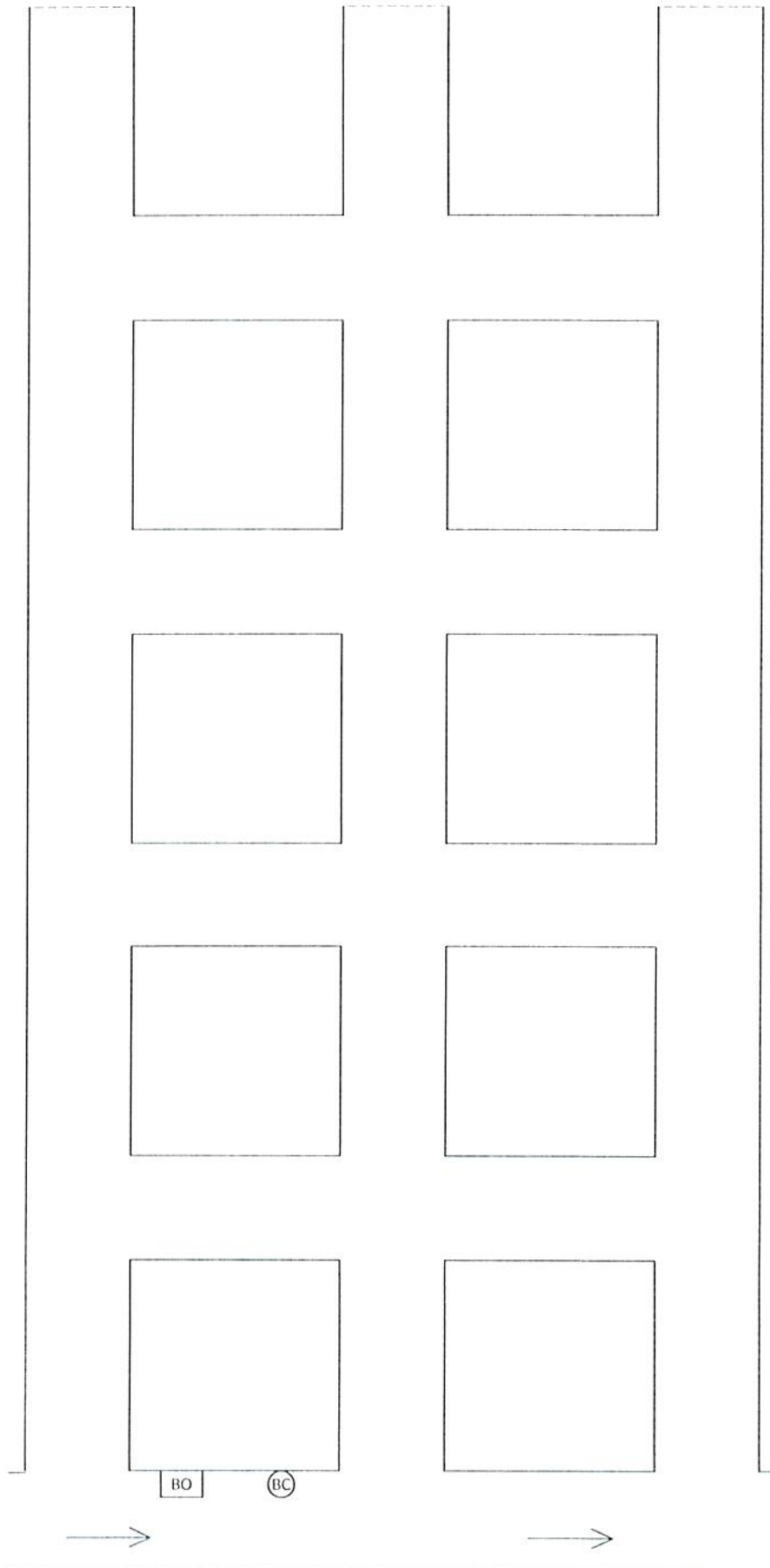
# DAY 2 Vent 2



# DAY 2 Vent 3



## DAY 2



July 15-17, 2024  
2024 P.B.S.A. Mine Rescue, First Aid Bench Contest  
Mine Rescue Competition Working Order Day 2 - July 16, 2024

---

Working Order	Company Name Team Name	Captain
1	Consol Energy Harvey Blue	Jake Tarley
2	Consol Energy Bailey White	Chuck Sochor
3	Consol Energy Enlow Fork	Shawn DeWitt
4	Iron Senergy Cumberland Blue	Brett Balabon
5	Iron Senergy Cumberland Gray	David Rice Jr.
6	Consol Energy Harvey Gray	Jason Burchik
7	Consol Energy Bailey Blue	Matt Cunningham