

BG4 Bench Test

1. During the exhalation valve test, if valve is operating properly, -10 _____ is indicated on the pressure gauge.
 - A. psi
 - B. mbar
 - C. volume

2. _____ is used to connect the BG-4 apparatus to the RZ-25 tester.
 - A. Valve seat
 - B. Breathing hose
 - C. Test adapter

3. The battery in the Sentinel should be replaced every __ months.
 - A. 6
 - B. 4
 - C. 3

4. During the _____ pressure _____ test, the pressure change within 1 minute must be lower than 1 mbar.
 - A. positive, drain
 - B. negative, leak
 - C. positive, leak

BG4 Bench Test

5. Only DRAGERSORB _____ is to be used to fill the refillable cartridge.
- A. 40
 - B. 400
 - C. 440
6. A _____ pressure in the breathing circuit prevents ambient air from entering the system.
- A. negative
 - B. positive
 - C. neutral
7. The BG-4 is approved with a factory/refillable _____.
- A. cartridge
 - B. housing
 - C. container
8. The Sentinel monitoring system comprises a _____ unit, _____, and Sentinel.
- A. pressure, controlbox
 - B. sensor, controlbox
 - C. sensor, switchbox

BG4 Bench Test

9. The BG-4 constant dosage must be _____ to _____ L/min.

A. 1.5, 1.8

B. 1.4, 1.9

C. 1.5, 1.9

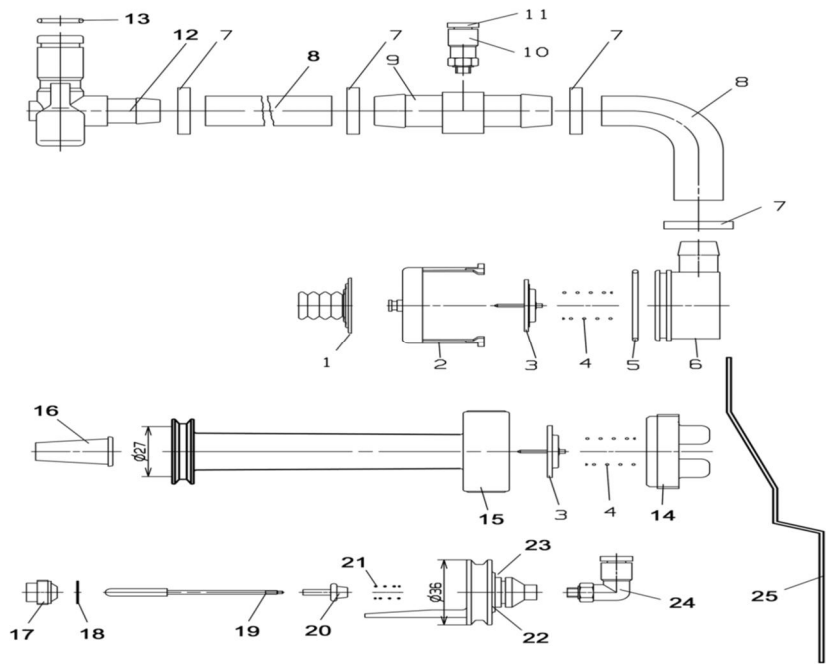
10. The drain valve should not open at less than _____ mbar.

A. 10

B. 18

C. -10

Drain/Relief/Minimum Valve Assembly



1 Cons. No.	2 Designation	1 Cons. No.	2 Designation
1	_____ Disc (11)	12	Coupling, pressure valve
2	Crater Case	14	Cap
3	Valve Disc	15	Drain Valve Tube
4	Relief / Drain Valve Spring	16	_____ (14)
5	_____ (12)	18	Washer
7	Clamp Fitting	19	Rocker Arm
10	O-Ring	21	_____ (15)
11	Compression _____ (13)	24	Angle Connector
		25	Clamp, Minimum Valve

- (11)

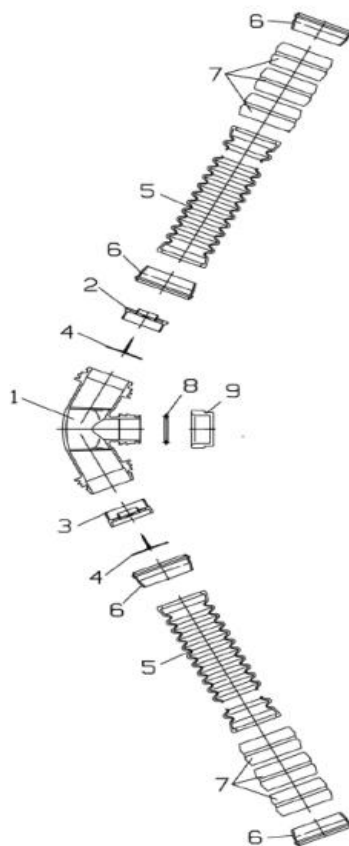
A. Top Hat
B. Valve
C. Cover
- (12)

A. Fitting
B. Washer
C. O-Ring
- (13)

A. Ring
B. Washer
C. Coupling
- (14)

A. Stem
B. Seat
C. Filter
- (15)

A. Connector
B. Spring
C. Coil



No.	Designation	No.	Designation
1	Coupling	6	_____ Ring (19)
2	_____ Valve Seat (16)	7	Anti Crush rings
3	_____ Valve Seat (17)	8	Toroidal Sealing Ring
4	Valve Disc	9	_____ Cap (20)
5	_____ Hose (18)		

- (16)
A. Drain
B. Inhalation
C. Exhalation

- (17)
A. Inhalation
B. Exhalation
C. Relief

- (18)
A. Correlation
B. Corrugated
C. Constant

- (19)
A. Bonnet
B. Locking
C. Bayonet

- (20)
A. Testing
B. Relief
C. Sealing

8, 6, 2, 11, 12, 14, 15, 16, 18, 19

1. B
2. C
3. A
4. C
5. B
6. B
7. A
8. C
9. C
10. A
11. B
12. C
13. A
14. C
15. B
16. B
17. B
18. B
19. C
20. C