

IN Bench Contest 240R Test Name_____

Number_____

1. Always handle oxygen cylinders with care to _____. (#6)
 - A. prevent accident
 - B. prevent damage
 - C. prevent leaks

2. The battery is to be changed in _____ air only. (#2)
 - A. fresh
 - B. ambient
 - C. zero

3. If the optional magnetic wiper is utilized soak _____ chamois surfaces of the wiper pieces with water. (#34)
 - A. one
 - B. inside
 - C. both

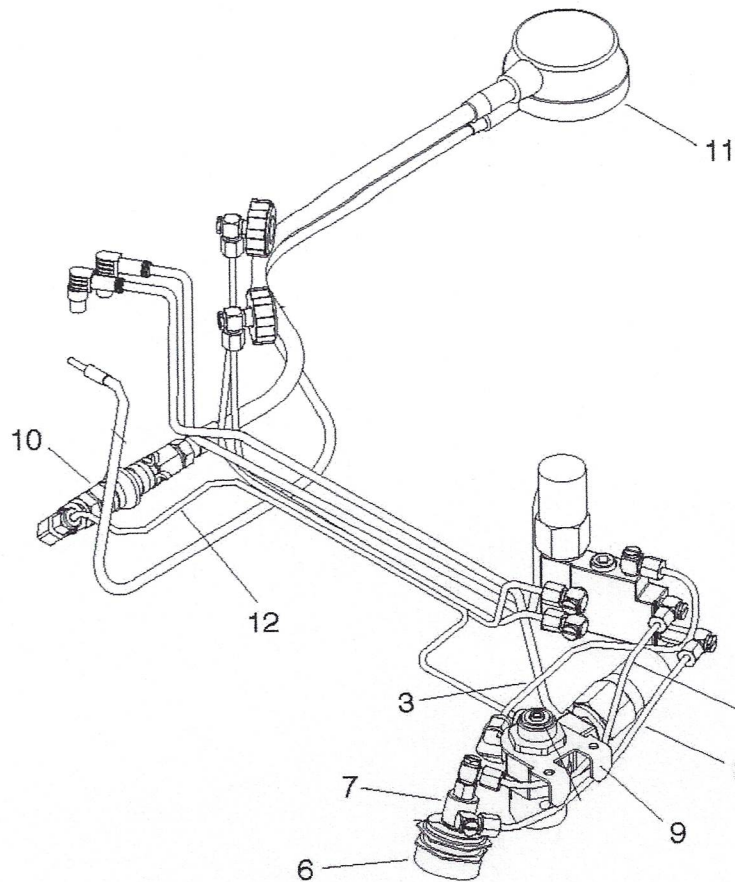
4. The BioPak breathing chamber has a _____ Volume greater than 6 liters. (#71)
 - A. Total
 - B. Pressure
 - C. Tidal

5. The use of an _____ will add to the workload and stress of the user. (#10)
 - A. 240R
 - B. BioPak
 - C. SCBA

6. During an alarm test the LED indication should turn to a flashing red with a horn sounding when the pressure gauge reads between _____ psi. (#78)
 - A. 550-1000
 - B. 650-1000
 - C. 750-1000

7. Claustrophobia or _____ when wearing a SCBA could limit or prevent the use of the BioPak 240 Revolution. (#85)
- A. Hypertension
 - B. Anxiety
 - C. Anxiousness
8. The _____ gauge is protected against sudden loss of oxygen in the event of the gauge line severing by a manual disconnect located at the gauge pass through point of the housing. (#82)
- A. pressure
 - B. exterior
 - C. oxygen
9. A foreign gas may cause cylinder _____. (#14)
- A. corrosion
 - B. deterioration
 - C. failure
10. Cylinders that have been hydro-static tested shall be cleaned for high-pressure oxygen service per _____. (#57)
- A. manufacturer Standards
 - B. Industry Standards
 - C. national standards

Pneumatic Assembly



| No. | Designation | No. | Designation |
|-----|------------------------|-----|---------------------------------|
| 1 | Bypass Feed Tube | 9 | Oxygen _____ Assembly (14) |
| 2 | Bypass Return Tube | 10 | Remote Gauge Shut Off Assembly |
| 3 | _____ Feed Tube (11) | 11 | Remote Gauge _____ (15) |
| 6 | _____ Push Button (12) | 12 | Remote Gauge Feed Tube Assembly |
| 7 | _____ Valve (13) | | |

(11)

- A. Bypass
- B. Return
- C. Oxygen

(12)

- A. Relief Valve
- B. Bypass Valve
- C. Minimum Valve

(13)

- A. Relief
- B. Bypass
- C. Minimum

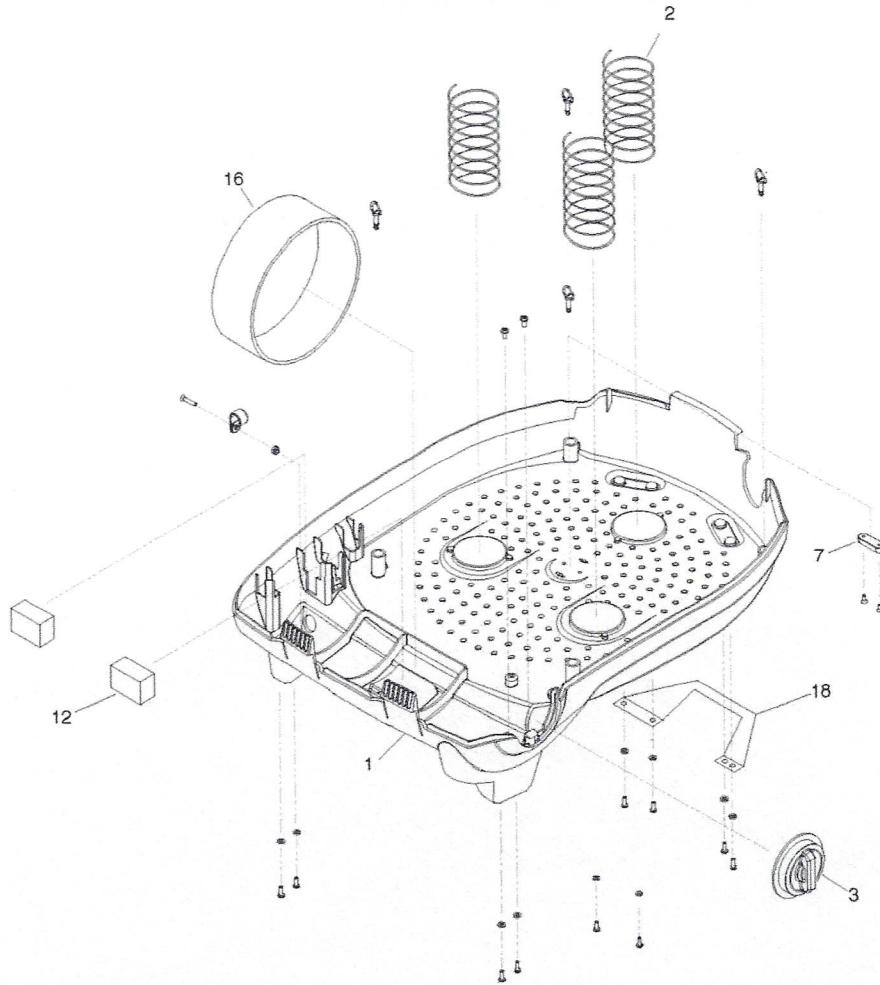
(14)

- A. Regulator
- B. Distributor
- C. Sensor

(15)

- A. Unit
- B. Display
- C. Assembly

Lower Housing Assembly



| No. | Designation | No. | Designation |
|-----|----------------------------|-----|-----------------------------------|
| 1 | Lower Housing Shell | 12 | Latch _____ Pad (19) |
| 2 | _____ Springs (16) | 16 | Oxygen _____ Hold-Down Strap (20) |
| 3 | External Oxygen _____ (17) | 18 | Carrying Handle |
| 7 | _____ Spacer (18) | | |

(16)
A. Air Bag
B. Housing
C. Diaphragm

(17)
A. Knob
B. Cap
C. Adjustment

(18)
A. Drain
B. Shell
C. Vent

(19)
A. Rubber
B. Foam
C. Cushion

(20)
A. Cylinder
B. Bottle
C. Canister