

2021 WKMI



MINE RESCUE CONTEST

2021 WKMI MINE RESCUE CONTEST SUPERINTENDENT STATEMENT

Thank you for coming out to our call for help. You are located at the FAB of the WKMI #2 mine. At 5:30 am this morning, we had an event that disrupted ventilation and caused damage to our exhaust fan. We are working to restore the fan and will inform the tram when we have it fixed. The WKMI #2 mine is a single unit mine mining in virgin coal. At the time of the event, we had seven miners working underground. All are unaccounted for and could not be contacted by the mine communication system. Under normal mining, conditions intake air travels in the #1 and #2 entries and out the #3 entry. We have had problems with methane, bad roof, and ribs at this mine. We would like your team to help us locate the missing miners.

All State and Federal agencies have been notified and are on-site as well as additional mine rescue teams to serve as backup. This is all the information that I have at this time.

Thanks and good luck!!

2021 WKMI

PROBLEM / WRITTEN INSTRUCTIONS

- Explore all areas of the mine that can be done safely
- Account for all missing miners
- Bring all survivors to the FAB
- The fan can be turned on and off if requested by the team
- The fan cannot be stalled or reversed
- You have 120 minutes to complete this problem

2021 WKMI MINE RESCUE CONTEST JUDGES BRIEFING

Number 1. entry GT the opening

Number 2. entry GT the opening

Number 3. entry GT, DI, & RR the unsafe roof

Teams will travel up the number one or two entry

Team Stop One

- Crosscut between the #1 & #2 entries GT
- Inby GT

Team Stop Two

- Crosscut between the #2 & #3 entries GT
- Inby GT & DI at the barricade
- Outby GT tying back

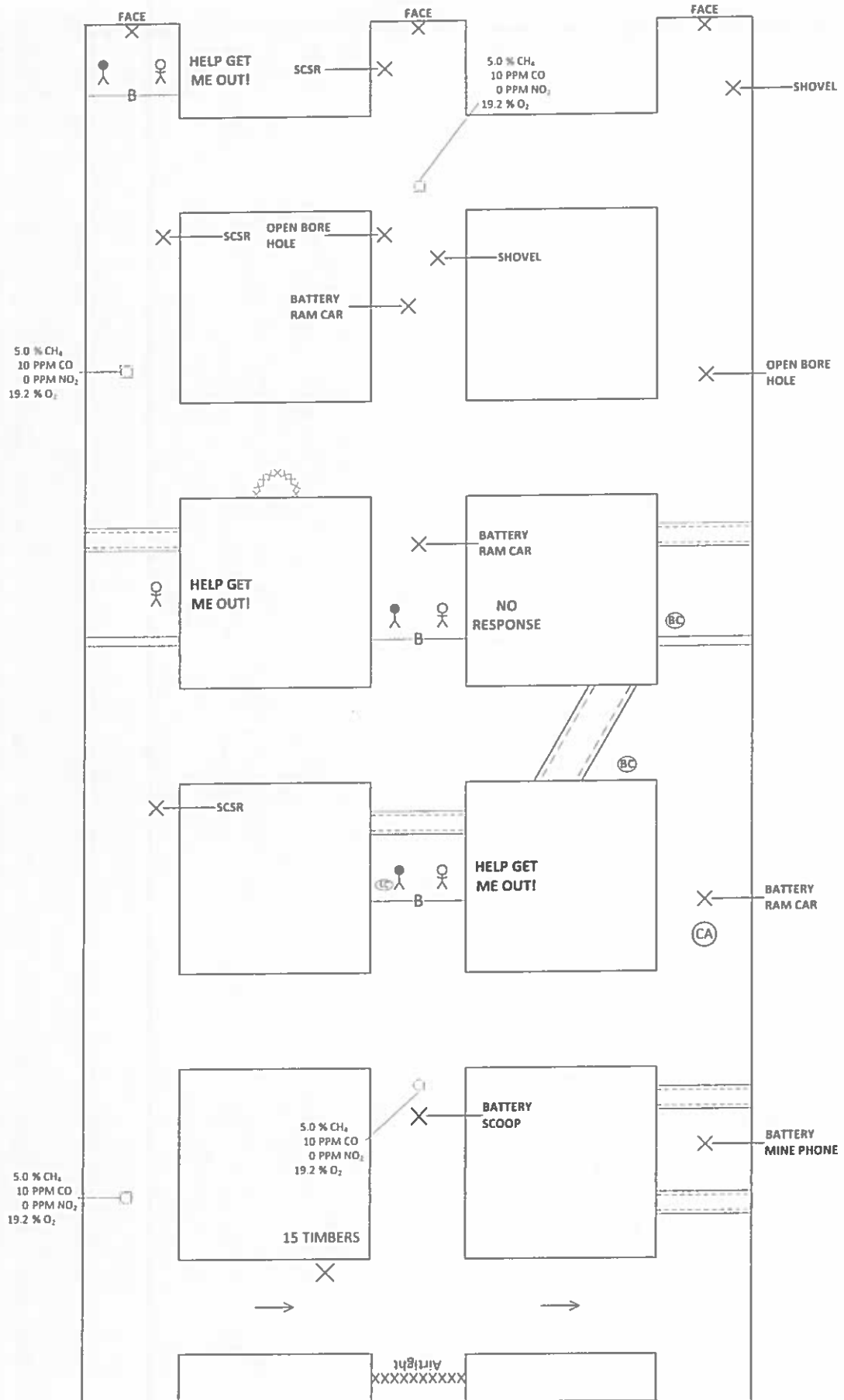
Team Stop Three

- Inby GT
- Outby GT, DI, & RR at the unsafe roof

Team Stop Four

- Crosscut between the #1 & #2 entries GT
- GT & DI at the stopping

2021 WKMI PROBLEM MAP



Team Stop Five

- Inby GT & DI at the barricade
- Outby RR, DI & GT at the unsafe roof
- Crosscut between the #2 & #3 entries GT, DI, & RR at the angle unsafe roof
- Teams have timbers so they can timber through the unsafe roof outby then RR, DI & touch the patient and touch the body

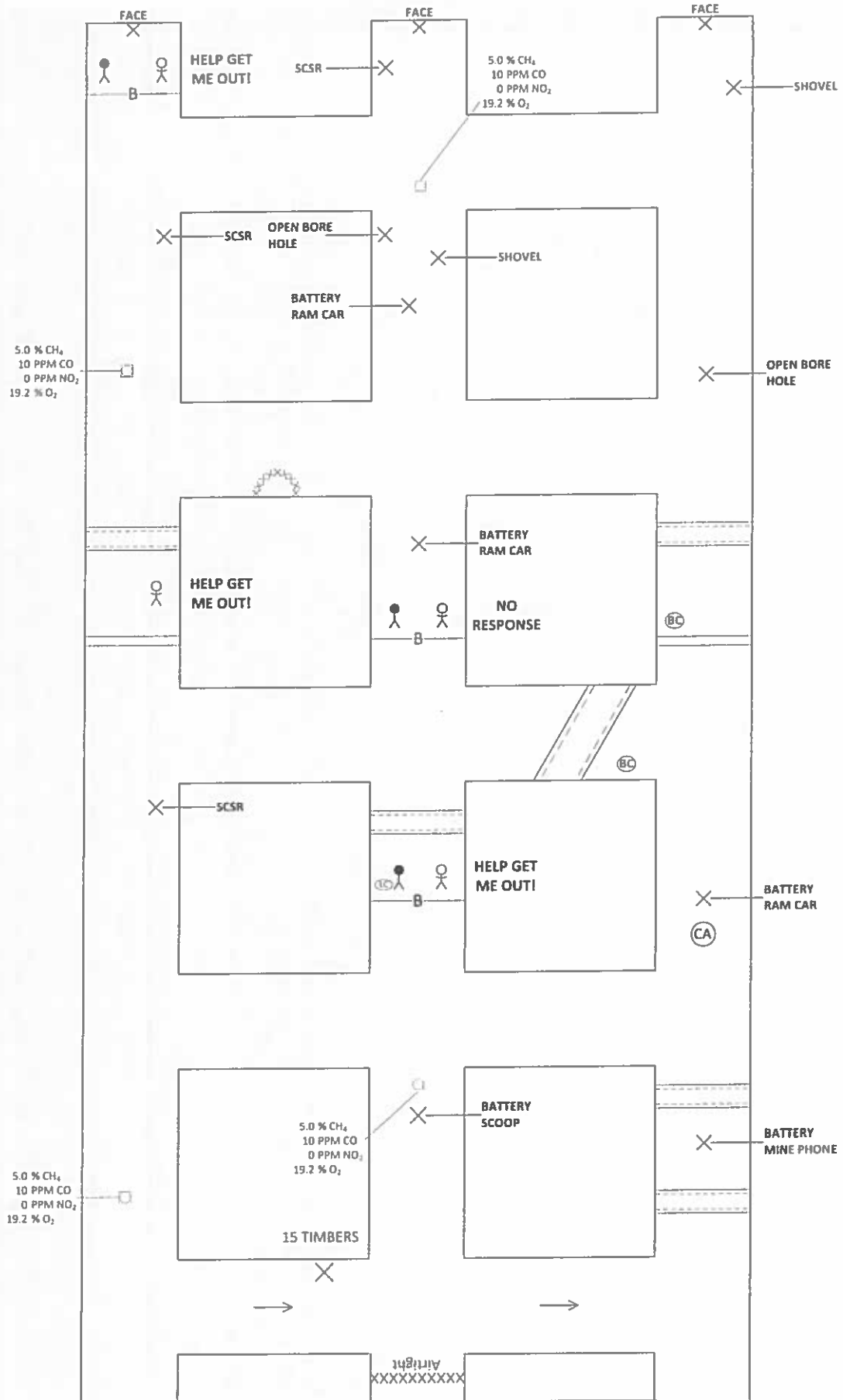
Team Stop Six

- Inby DI & GT stopping
- Teams will have to build here and make the area behind the stopping and get the BC's to ventilate
- Crosscut between the #2 & #3 entries GT, DI, & RR the angle unsafe roof
- Teams must now ventilate the stopping in the #1 entry

First Ventilation

- Airlock to enter the stopping
- Stopping GT
- Patient – Touch, Assess & DI
- GT, DI, & RR at the unsafe roof
- Take Patient to the FAB
- Teams now can ventilate the second barricade in the #2 entry

2021 WKMI PROBLEM MAP



Second Ventilation

- The team will need to remove the gas in front of the barricade
- Airlock to enter the barricade
- Entering the barricade GT
- Patient – Touch, assess & DI
- Body – Touch & DI
- Take the patient to FAB

Team Stop Seven

- Inby GT
- Crosscut between the #1 & #2 entries GT, & Zig Zag RR at caved area
- Crosscut between the #2 & #3 entries GT

Team Stop Eight

- Team can travel to #1 or #3 entry
- Inby GT
- Outby RR, GT & DI at the unsafe roof

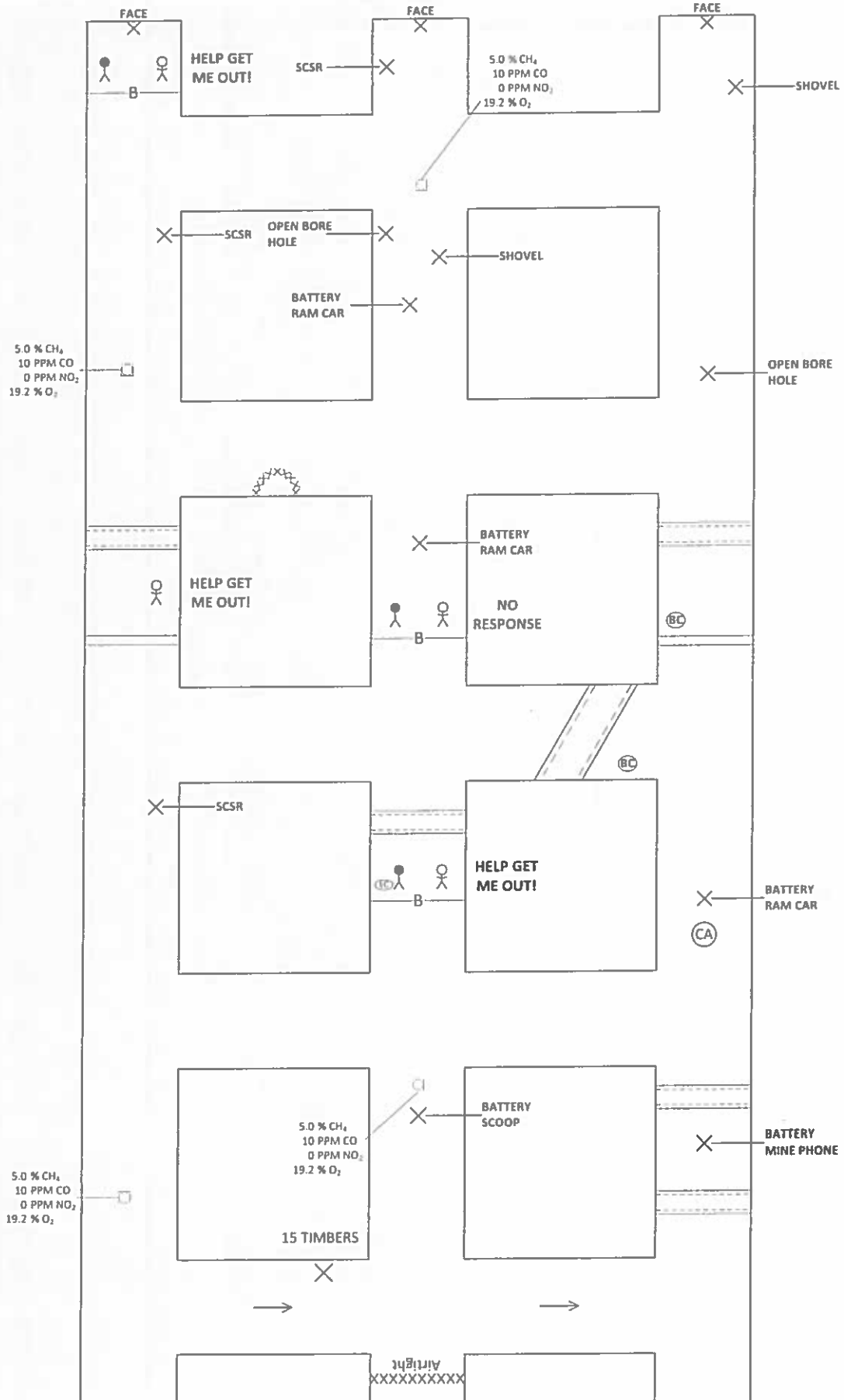
Team Stop Nine

- Inby GT
- Outby GT, DI & RR at the unsafe roof

Team Stop Ten

- Inby GT & DI at the barricade
- Crosscut between the #2 & #3 entries GT

2021 WKMI PROBLEM MAP



Team Stop Eleven

- Inby RR, DI & GT at the face
- Outby GT
- Crosscut between the #2 & #3 entries GT

Team Stop Twelve

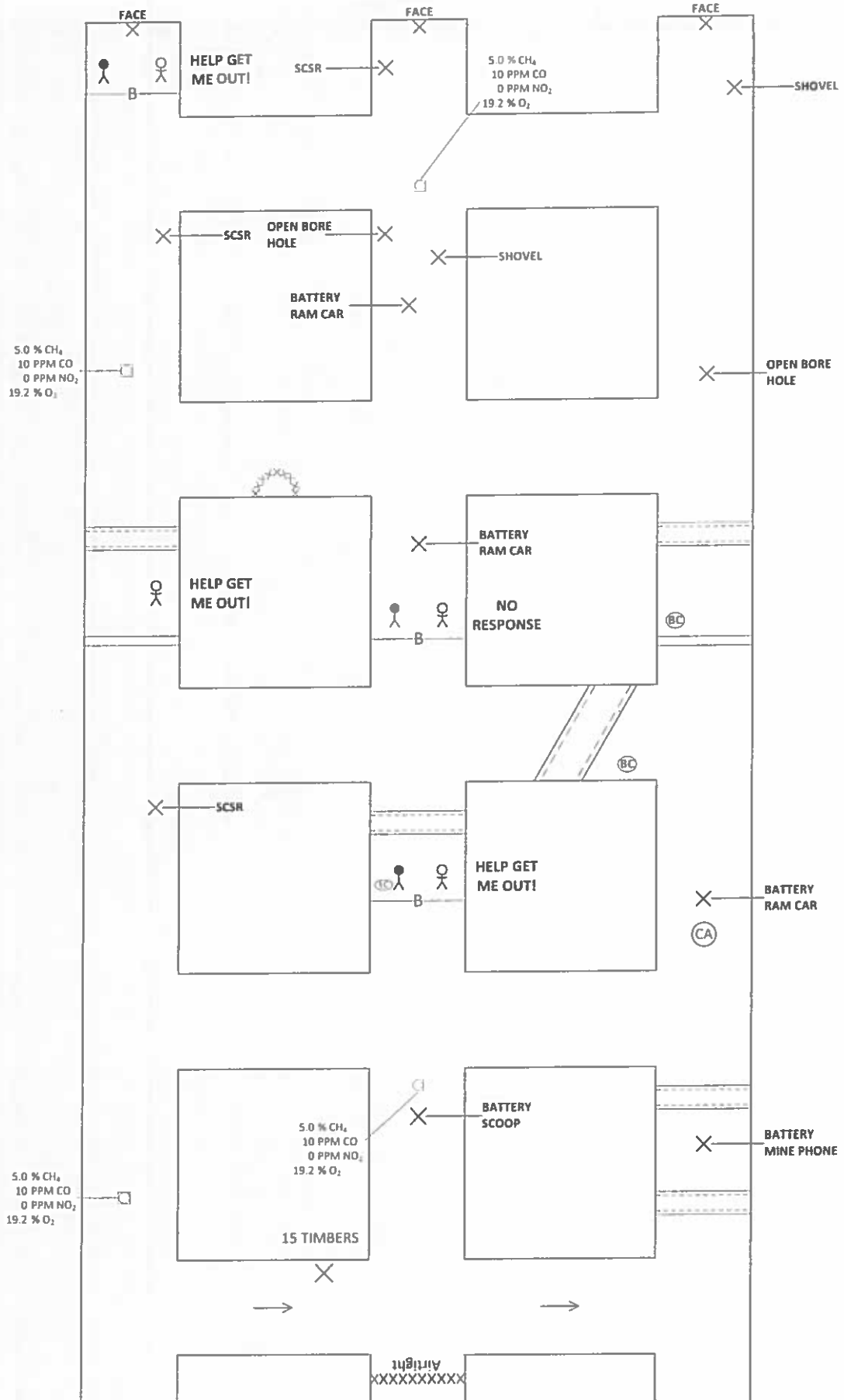
- Inby RR, DI & GT at the face
- Outby GT
- Teams must now ventilate the barricade in the #1 entry

Third Ventilation

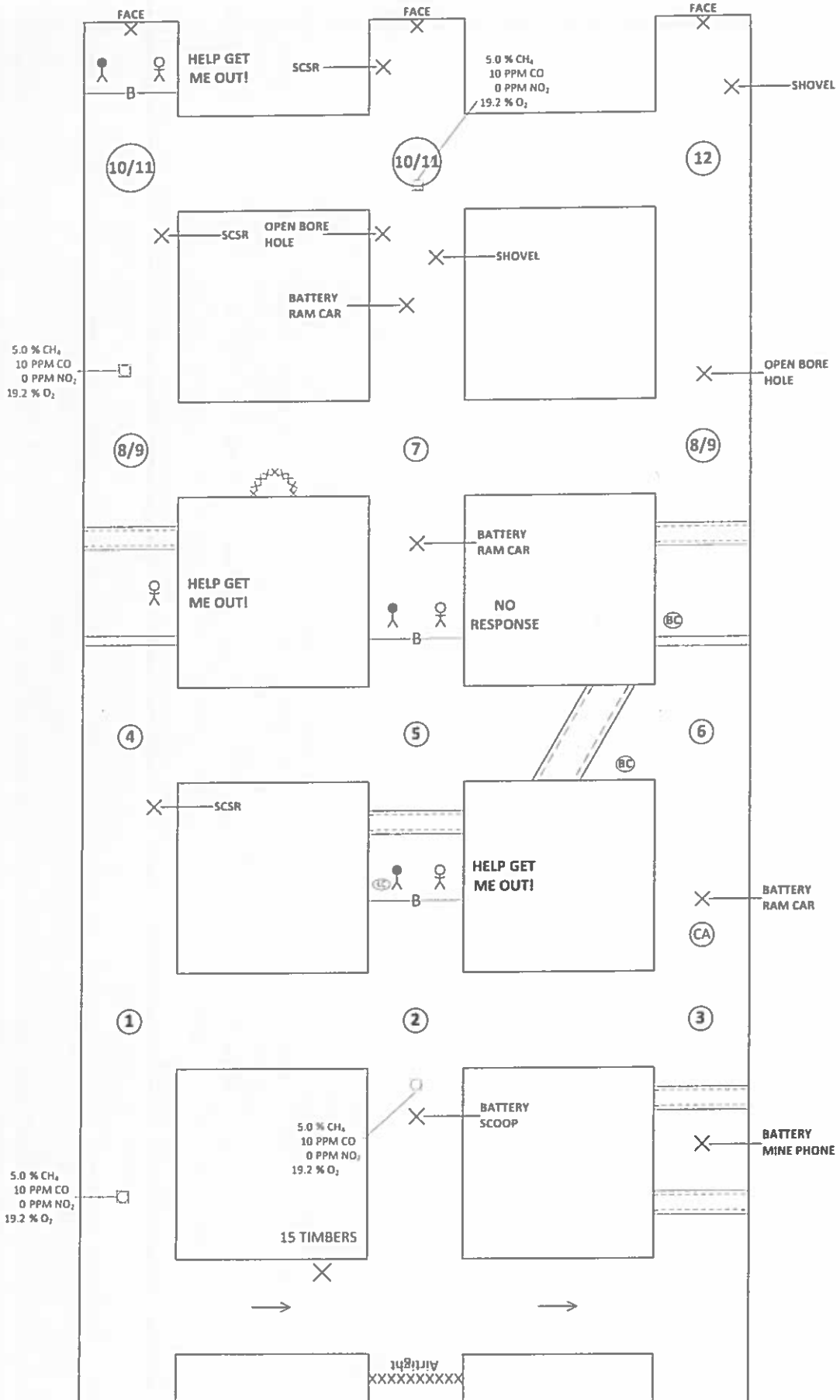
- The team will need to remove the gas in front of the barricade
- Airlock to enter the barricade
- Entering the barricade GT
- Patient – Touch, assess & DI
- Body – Touch & DI
- RR, DI & GT at the face
- Take the patient to FAB

STOP THE CLOCK

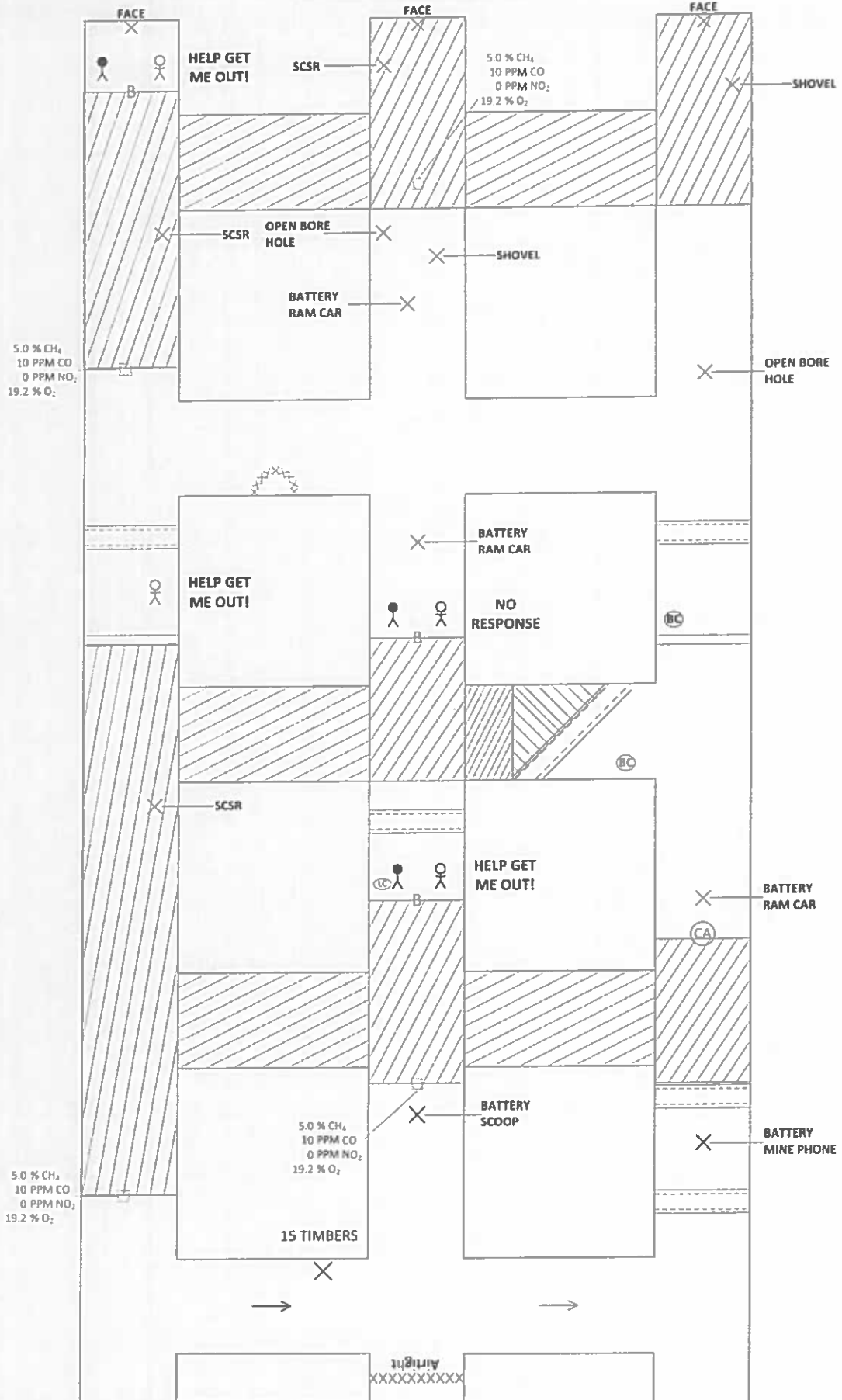
2021 WKMI PROBLEM MAP



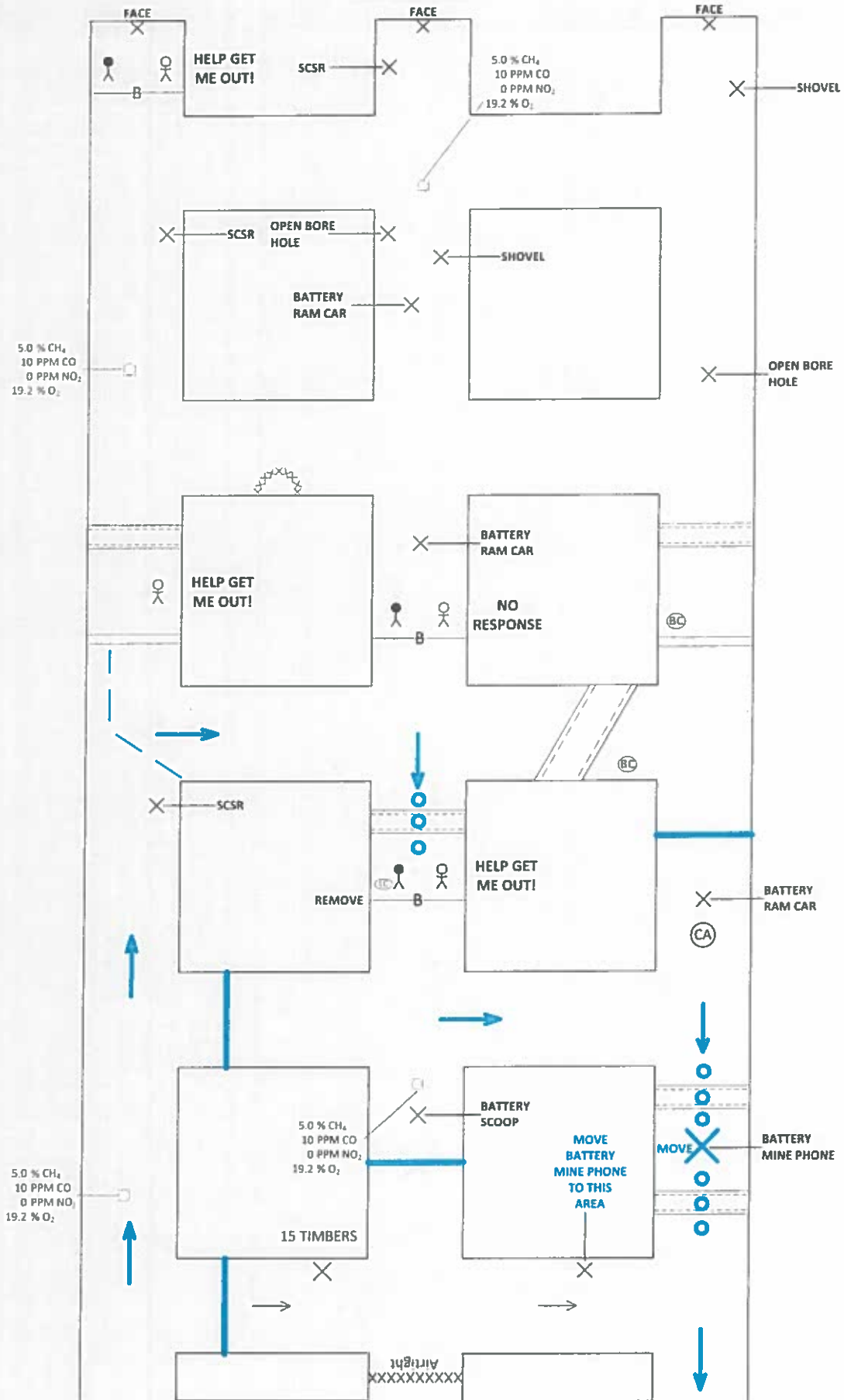
2021 WKMI TEAM STOPS MAP



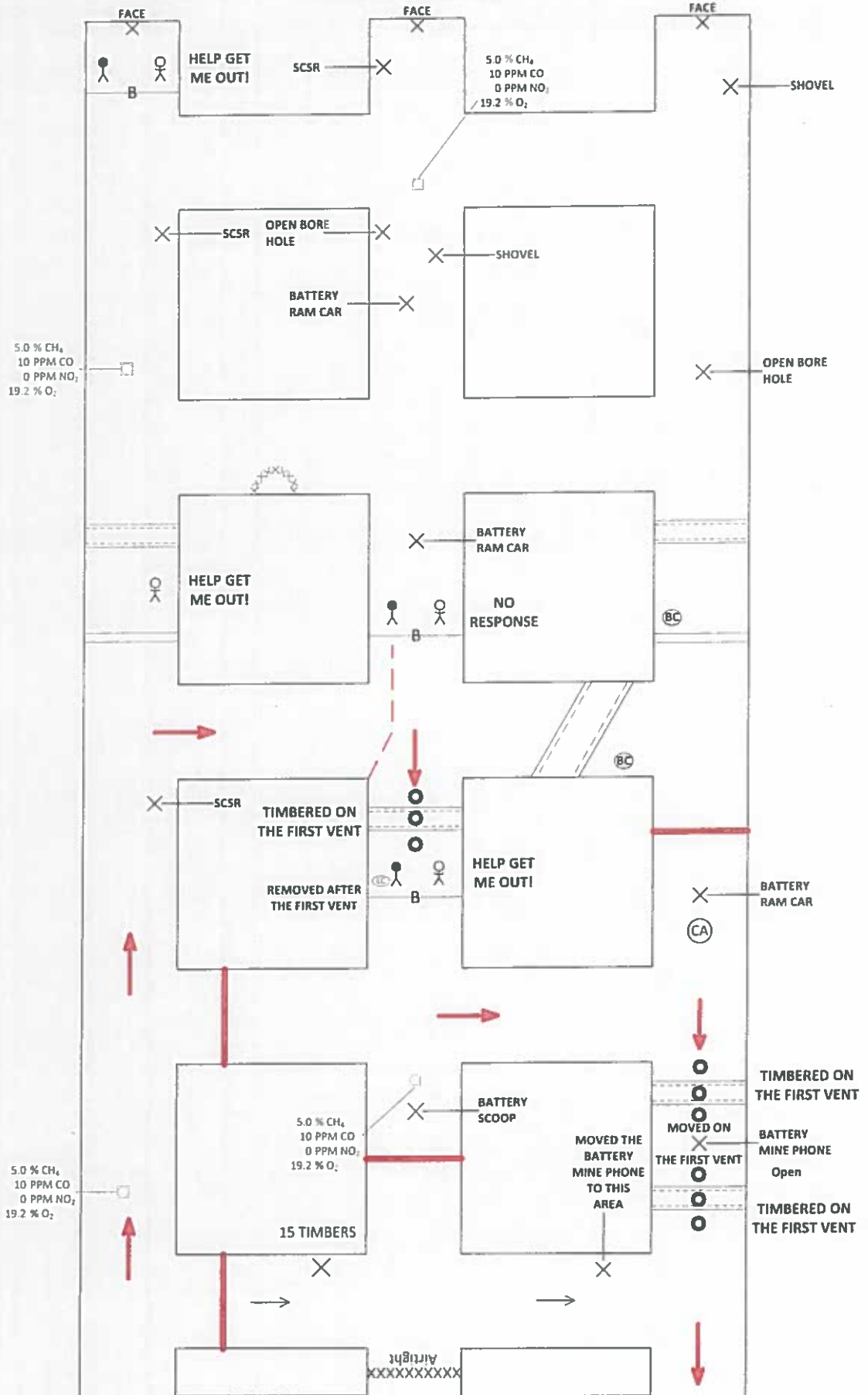
2021 WKMI EXTENT OF GASES MAP



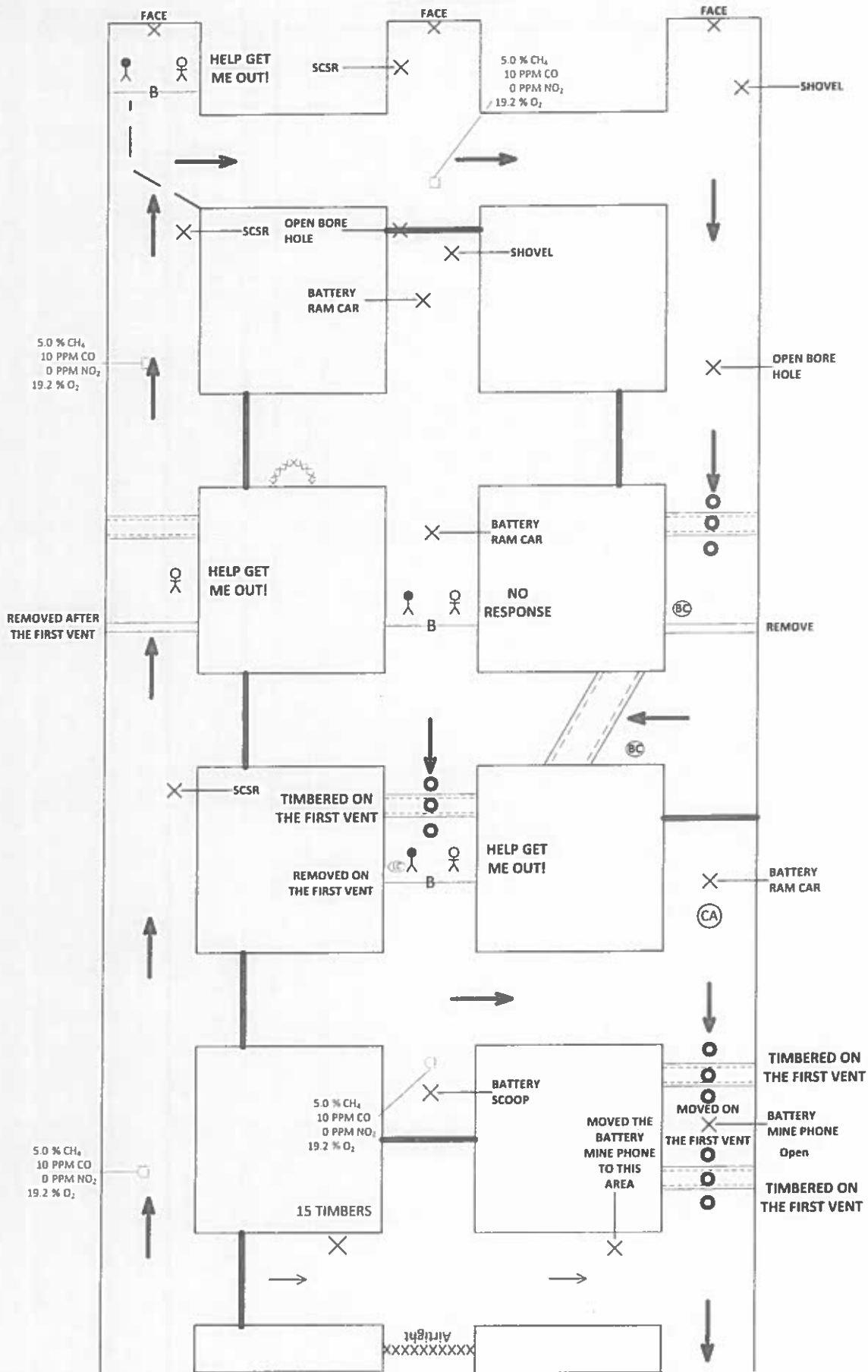
2021 WKMI FIRST VENT MAP



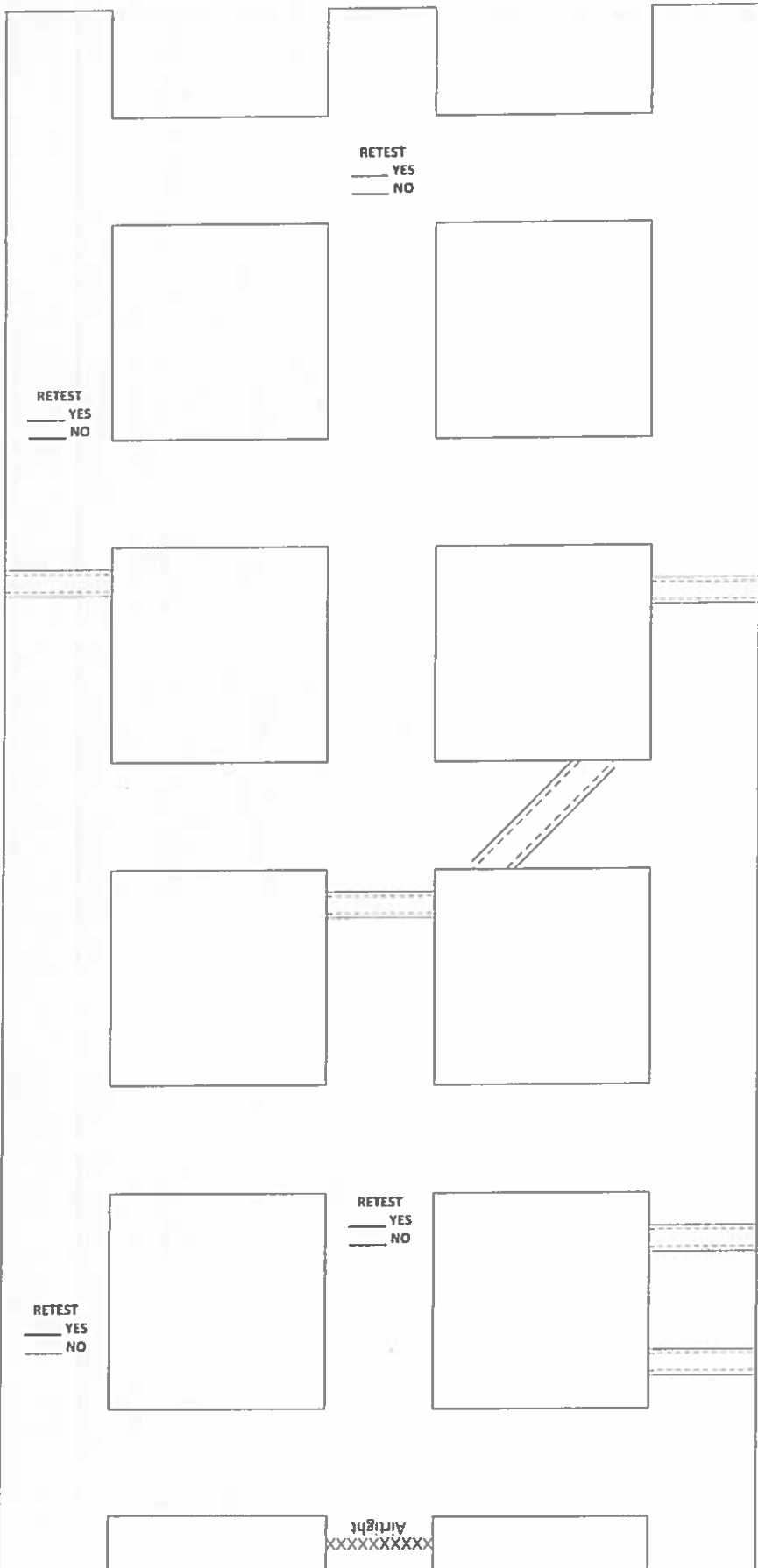
2021 WKMI SECOND VENT MAP



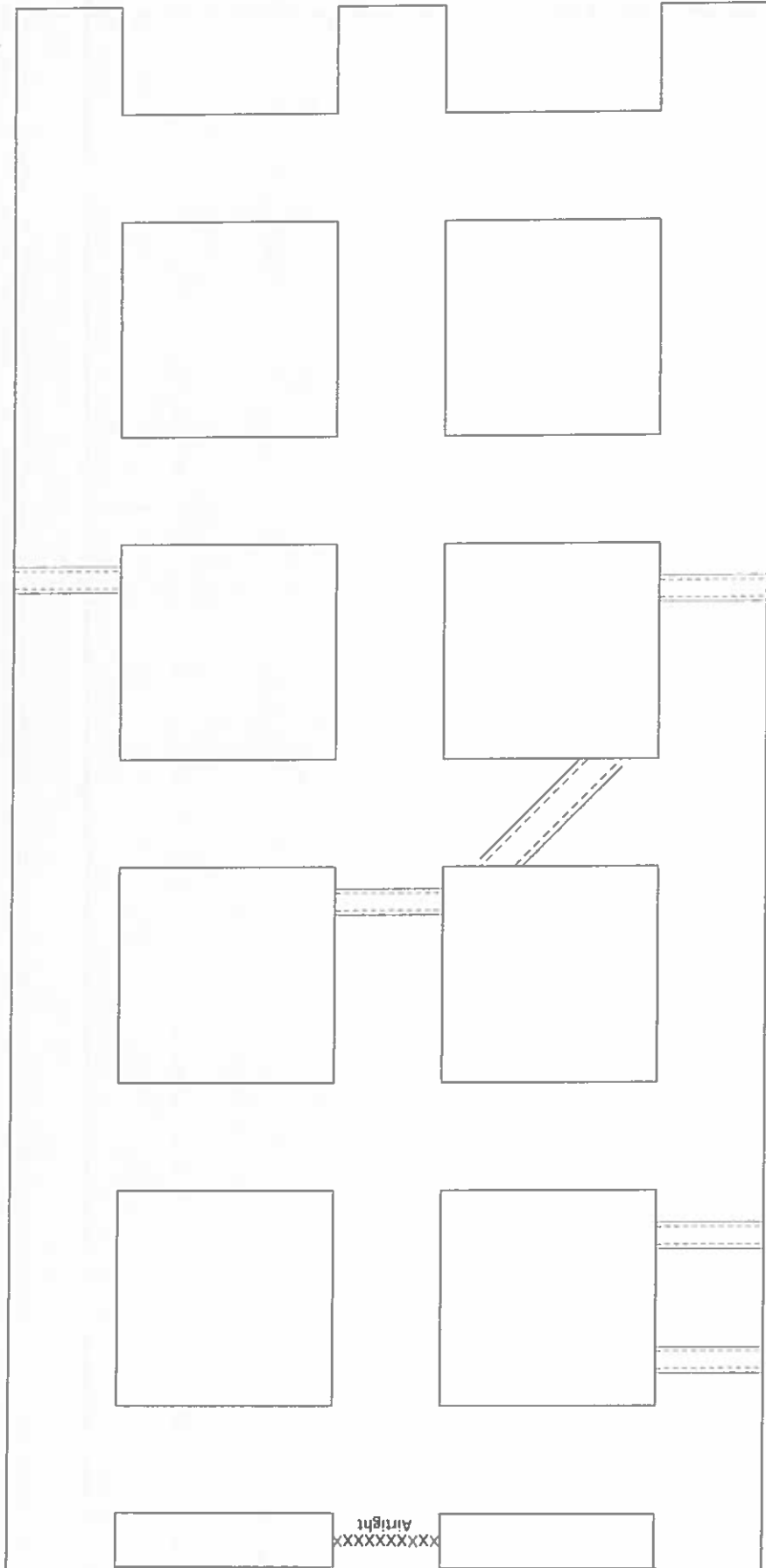
2021 WKMI THIRD VENT MAP



2021 WKMI
FINAL VENT MAP



2021 WKMI
BLANK MAP



PATIENT'S STATEMENT

**HELP GET
ME OUT!!**