

Circle one answer

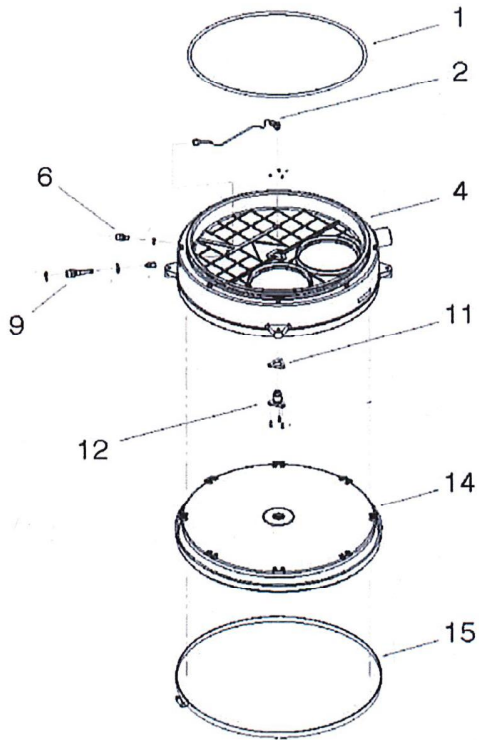
Name _____

1. Use only exact replacement _____ in the configuration as specified by the manufacturer.
pieces parts items
2. _____ will not cause materials to ignite without the presence of an ignition source.
Heat Chemicals Oxygen
3. The use of an SCBA will add to the workload and _____ of the user.
stress fatigue irritability
4. Allow the oxygen cylinder to cool _____ _____ to determine the correct pressure.
before filling after filling after use
5. A foreign gas may cause _____ _____.
wearer sickness apparatus corrosion cylinder corrosion
6. Always check for a current _____ test date.
cylinder hydrostatic DOT
7. An unapproved _____ will compromise the protection provided to the user by the SCBA.
part procedure facepiece
8. It is acceptable to leave the _____ _____ in place until after washing and disinfecting has been completed.
oxygen cylinder facepiece pressure reducer
9. Allow all components to remain wetted by the cleaning solution a minimum of _____ _____.
5 minutes 10 minutes 15 minutes
10. Thoroughly rinse all components in _____ _____ to remove all disinfectant solution.
disinfectant remover rinse solution clean water

Circle one answer

Name _____

11. The Cylinder should be inspected regularly for signs of damage to the ____ ____.
pressure valve outer wrapping pressure gauge
12. The LED indication will cease when the pressure gauge reads less than ____ psi.
25 50 75
13. If the flow does not meet the requirements of the table in the Bench Manual the
_____ _____ will need replacement.
pressure valve flow restrictor flow reducer
14. The constant Add is ____ liters average.
1.6 1.8 2.0
15. The flow test results at 0-5280 feet at a cylinder pressure of 1500-2000 shall be
_____ - 2.4 liters per minute.
1.6 1.8 2.0
16. The Demand Add flow is a minimum ____ liters per minute.
40 60 80
17. The oxygen cylinder has a volume of ____ liters at 3000 psi.
440 660 880
18. During an alarm test the LED indication should turn to a ____ ____ with a horn
sounding when the pressure gauge reads between 650-1000 psi.
steady red flashing green flashing red
19. The end of service life or low Oxygen alarm is a ____ ____ light and horn
sounding.
steady red flashing green flashing red
20. The pressure gauge is protected against sudden loss of oxygen in the event of a
gauge line severing by a _____ _____ located at the gauge pass through point of
the housing.
safety disconnect automatic disconnect manual disconnect



Center Section Assembly

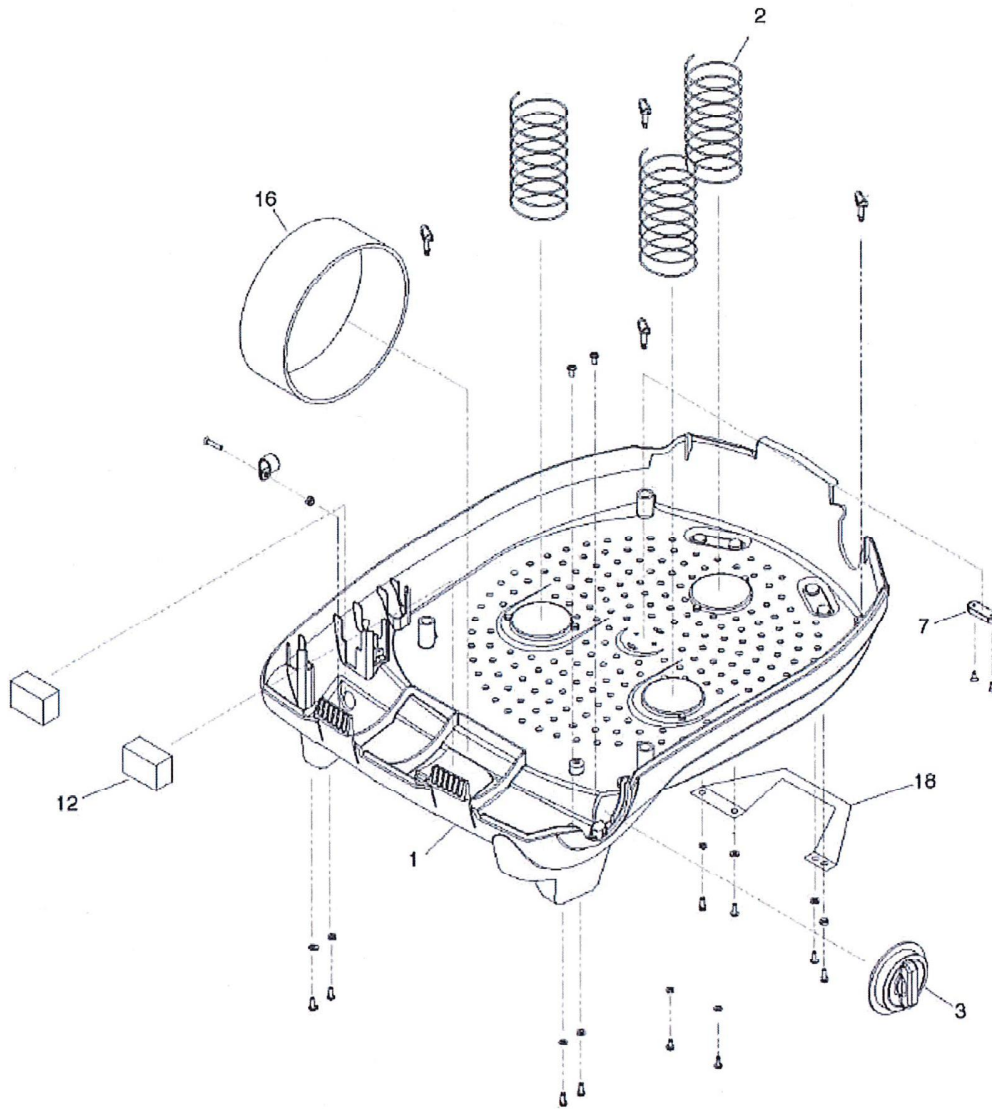
21. Part #9 is _____

- A. Demand Add Fitting
- B. Constant Add Fitting
- C. Demand Valve Fitting

22. Part #15 is _____

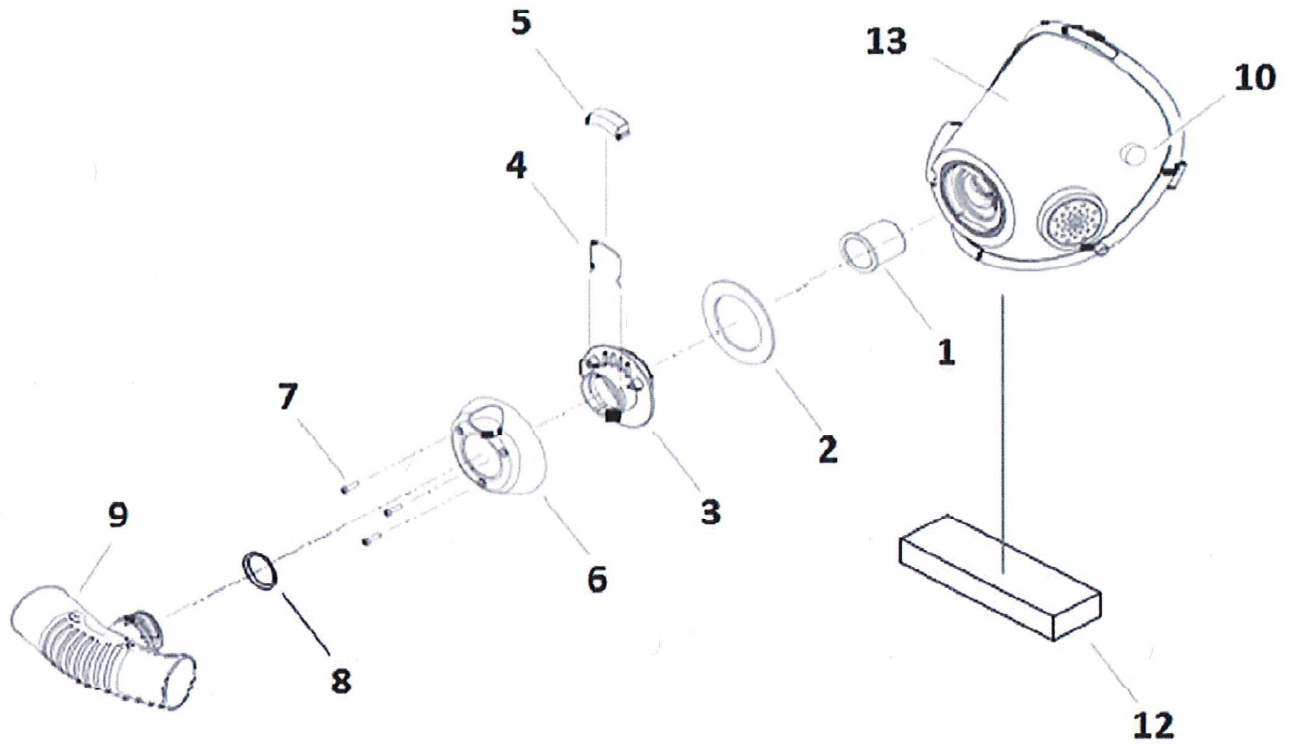
- A. Diaphragm Retainer
- B. Diaphragm Clamp
- C. Diaphragm Restricting Clamp

Lower Housing Assembly



23. Part #1 is _____. Lower Housing Frame Lower Housing Shell Lower Housing Case
24. Part #2 is _____. Diaphragm Springs Pressure Springs Spring Supports
25. Part #3 is _____. Oxygen Bottle Knob External Bottle Knob External Oxygen Knob
26. Part #16 is _____. Oxygen Cylinder Strap Oxygen Cylinder Hold Down Strap
Hold Down Strap

AV3500 Facemask-Complete



27. Part #4 is _____.
Clip
Spring Clip
Retaining Clip

28. Part #5 is _____.
Block
Button
Spring Block

29. Part #8 is _____.
Hose Adapter
Hose Adapter Washer
Hose Adapter O-Ring

30. Part #12 is _____.
Mask Condensation Pad
Chin Condensation Pad
Moisture Condensation Pad