

2017 Craig, CO Day 2 Written Statement

Thank you for responding to our continuing mine emergency. You are located at the inby fresh air base on the West Mains Section. 3 miners failed to return to the surface this morning after working on the seals inby the FAB. We have not heard from them. They were wearing SCBA's when last observed.

The exhausting main mine fan on the surface went down an hour ago and our crews are there attempting to get it operational. You will be notified when it becomes available.

The two air shafts are useable with a blowing fan on the surface in the #3 entry and a return air shaft in the #1 entry. The blowing fan is currently off and can be started if needed from controls in the command center. It cannot be reversed.

At present, there is no air movement into or out of the West Mains section inby the fresh-air-base.
Back up teams and all officials are on site.
The map is up to date.

Craig, CO 2017 Day 2
Written Problem

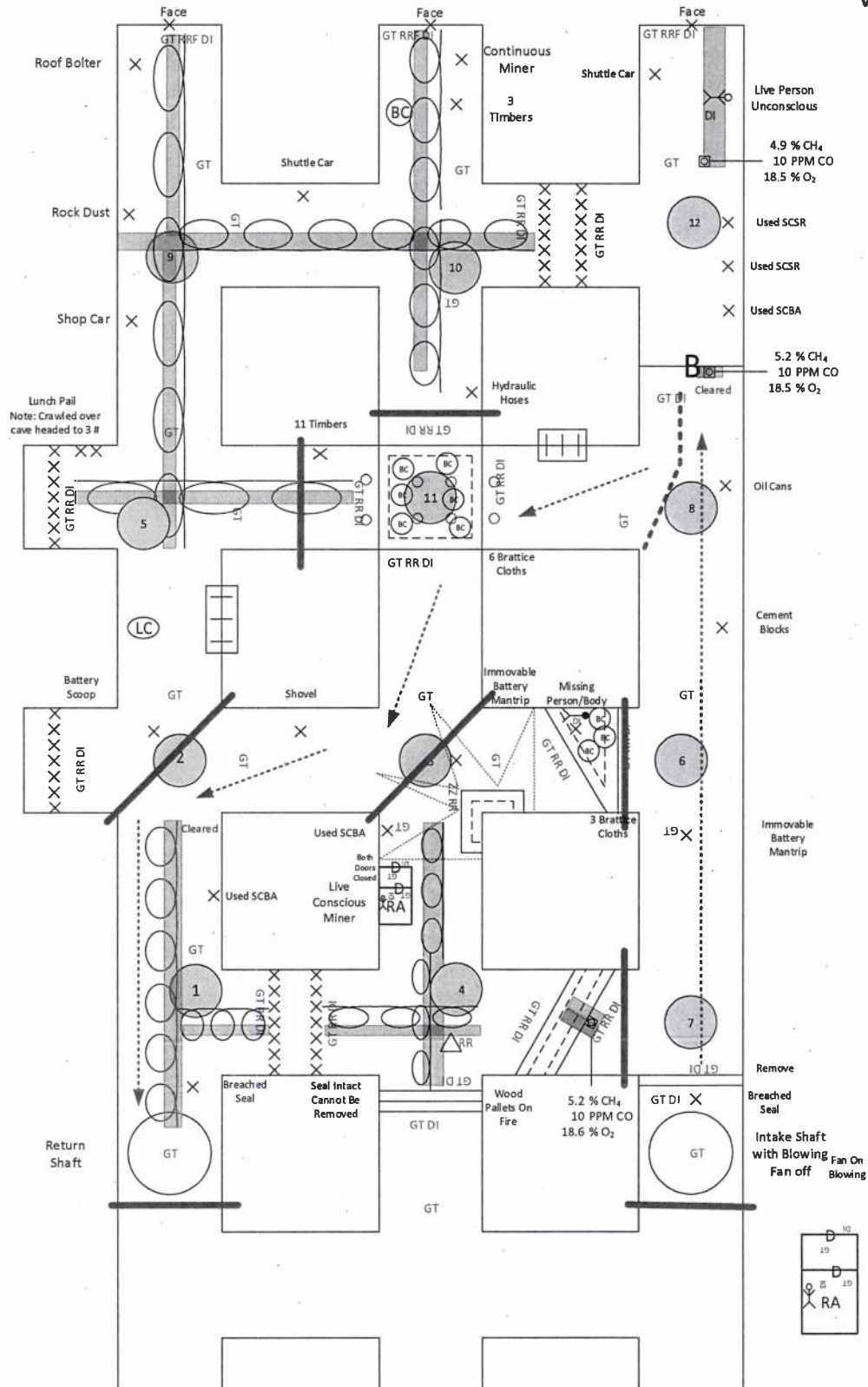
**Account for all missing miners and bring all
live persons to the fresh-air-base.**

**Explore all accessible areas that can be done
safely.**

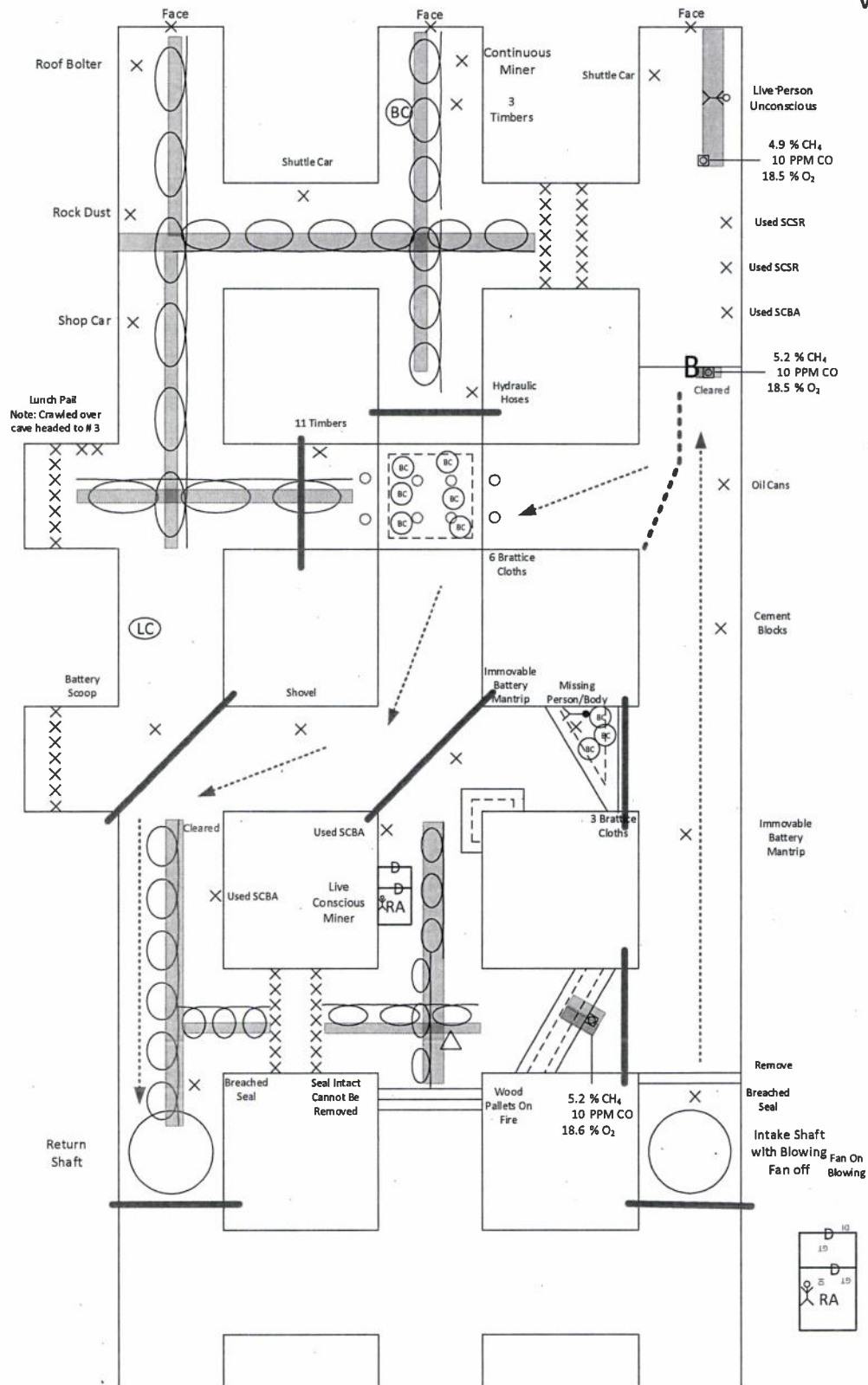
Craig, CO 2017 Day 2 Judges Instructions

1. Initial opening checks of each entry. Contaminant (smoke) found in 1 entry. Captain required to travel to imaginary line (therefore team must be on lifeline/linkline) Rule 29, and Rule 22
2. Team **stop 1** - (apparatus check required) In 1 entry at XC 1 (Rule 44). Radio teams required to set lifeline through smoke. Rule 22
Team must travel inby XC 1 to XC 2 in 1 entry.
3. Team **stop 2** - in 1 entry at XC 2. Not in smoke.
Team must tie across to 2 entry.
4. Team **stop 3** - in 2 entry at XC 2.
Zig zag RR required in intersection. Diagonal unsafe roof found but missing person can be seen within. No timbers available to touch person.
Outby intersection, RA encountered, in smoke. DI at outer door required (Rule 27). GT in airlock, GT in inner chamber, assess PT. DI Pt. Respiratory protection of Pt. required. Team members can get off lifeline to attend PT. inside RA but must re-connect once out of RA.
Team must remove Pt. to FAB walking.
Team returns to 2 entry and ties outby to XC 1.
5. Team **stop 4** - in 2 entry at XC 1. FIRE can be extinguisher after RR check.
6. Team **stop 5** - in 1 entry at XC 3. In Smoke. Timbers found. Team must retreat to unsafe diagonal in XC 2 between 2 and 3 entries and timber in and touch missing person. Teams should timber through unsafe roof.
7. Team **stop 6** - in 3 entry at XC 2.
8. Team **stop 7** - in 3 entry at XC 1.
9. Team **stop 8** - in 3 entry at XC 3. Barricade found inby XC 3 No response.
10. Teams do not have enough materials to vent.
11. Team **stop 9** - in 1 entry at XC 4. In Smoke. Radio teams must set life line. Rule 22.
12. Team **stop 10** - in 2 entry at XC 4.
Teams now have enough materials to vent barricade in 3 entry but must set timbers through unsafe intersection in 2 entry at XC 3 shown as team **stop 11**
See Vent 1
Airlock required prior to breaching barricade.
13. Team **stop 11** - in 3 entry XC 4. Unconscious Pt. must be placed on apparatus and stretcher then removed to FAB.
End of Problem

VENT 1



VENT 1



Final Vent

Team Name

Captain
Signature

Chief Judge
Name: Print

