

## Southern WV Mine Rescue

### 2016 Day Two

You will be located at the underground fresh air base of the Gravy Train #1 Mine. Thanks for returning for our second problem. Last Night a five person crew was sent to our D-Panel section to do dead work and some welding on the miner. We lost communication from the five miners, so we called you for help.

D-Panel is a three entry section and it to runs parallel with a sealed area. Mine Rescue Teams have explored to the mouth of D-Panel and established the fresh air base for you. They will serve as your back-up, but they will not be able to perform work. There is an air shaft in the face of #1. It will be located on your map.

The mine fan is off and can be started by contacting the command center attendant. All outby areas are safe to ventilate through. The fan can be started on either exhaust or blowing once started, it must remain running except when or if you decide to switch it.

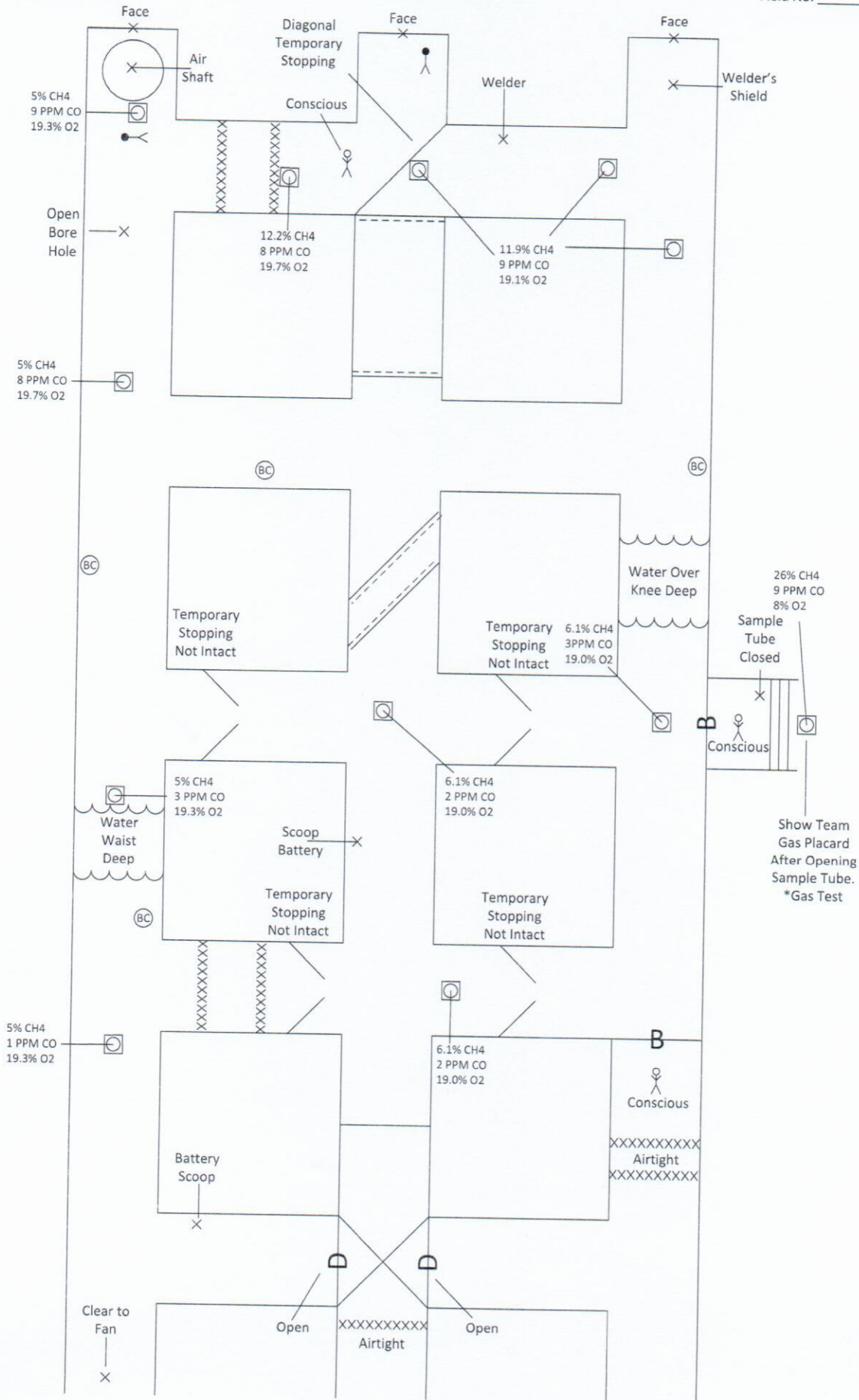
The mine maps were up to date at the start of our last shift.

## Southern WV Mine Rescue

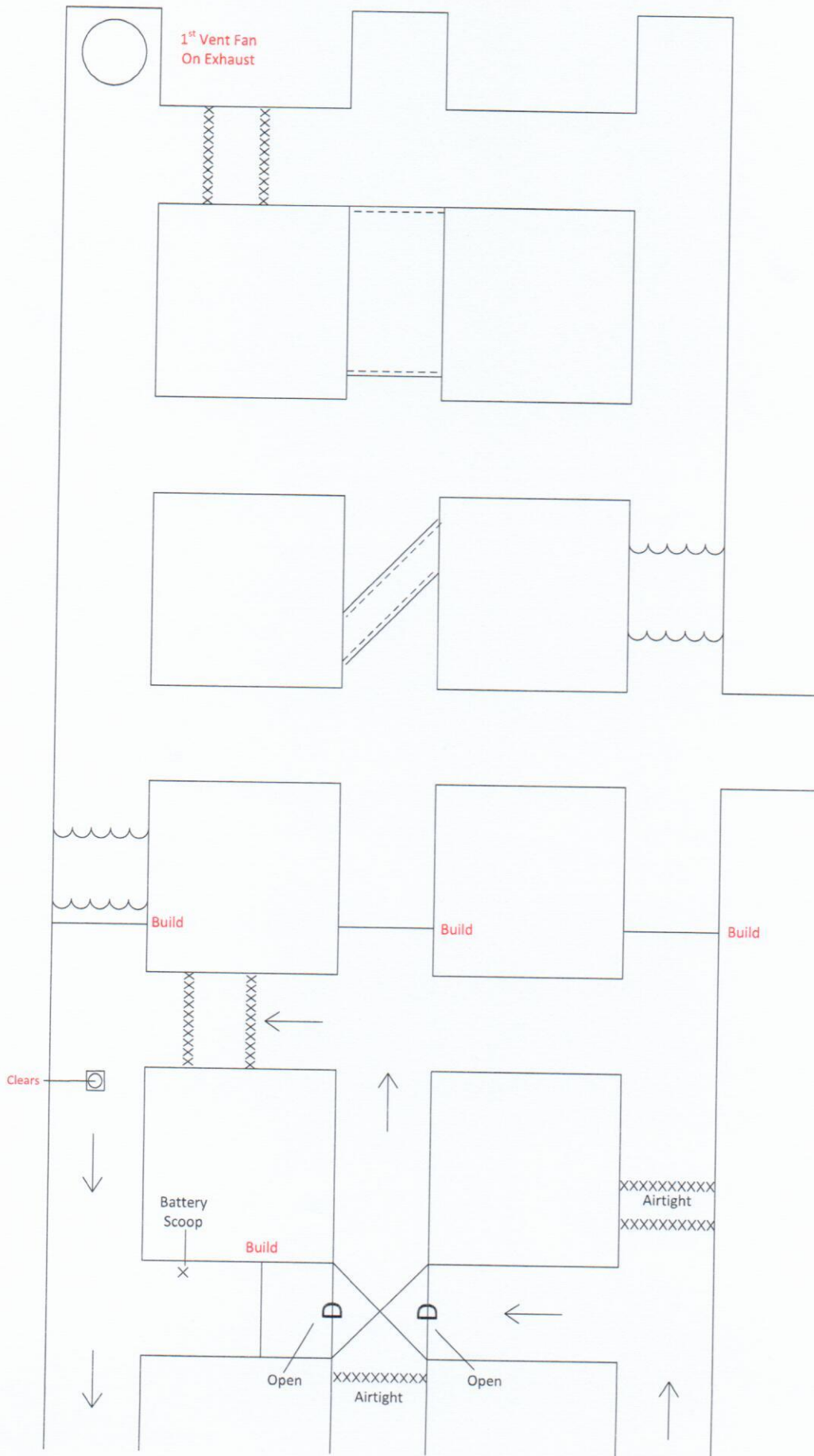
### Day Two

### Problem

- Explore the entire mines
- Account for the five missing miners
- Bring survivors to the fresh air base
- You can only carry two brattices while traveling

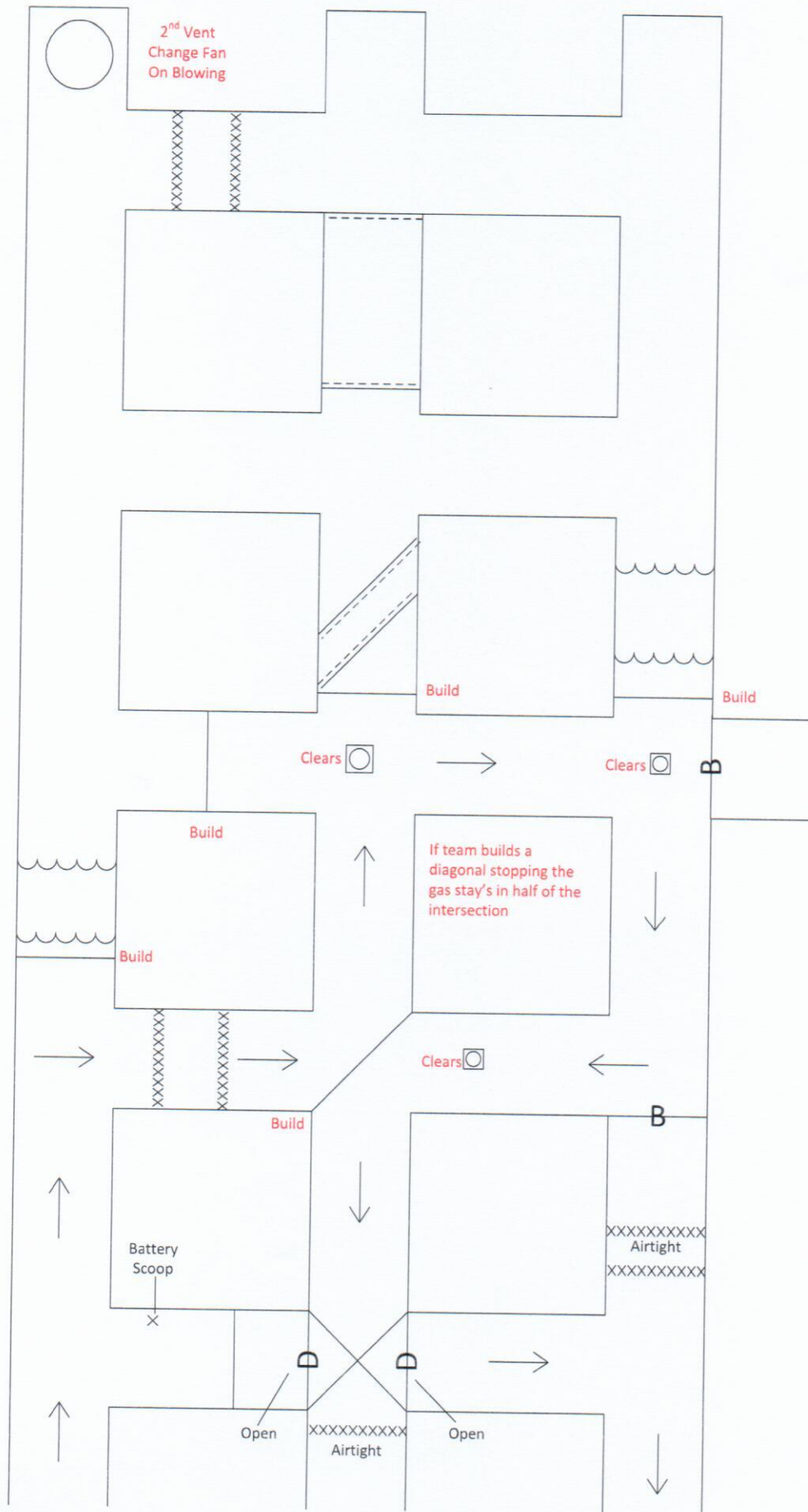


1<sup>st</sup> Vent Change

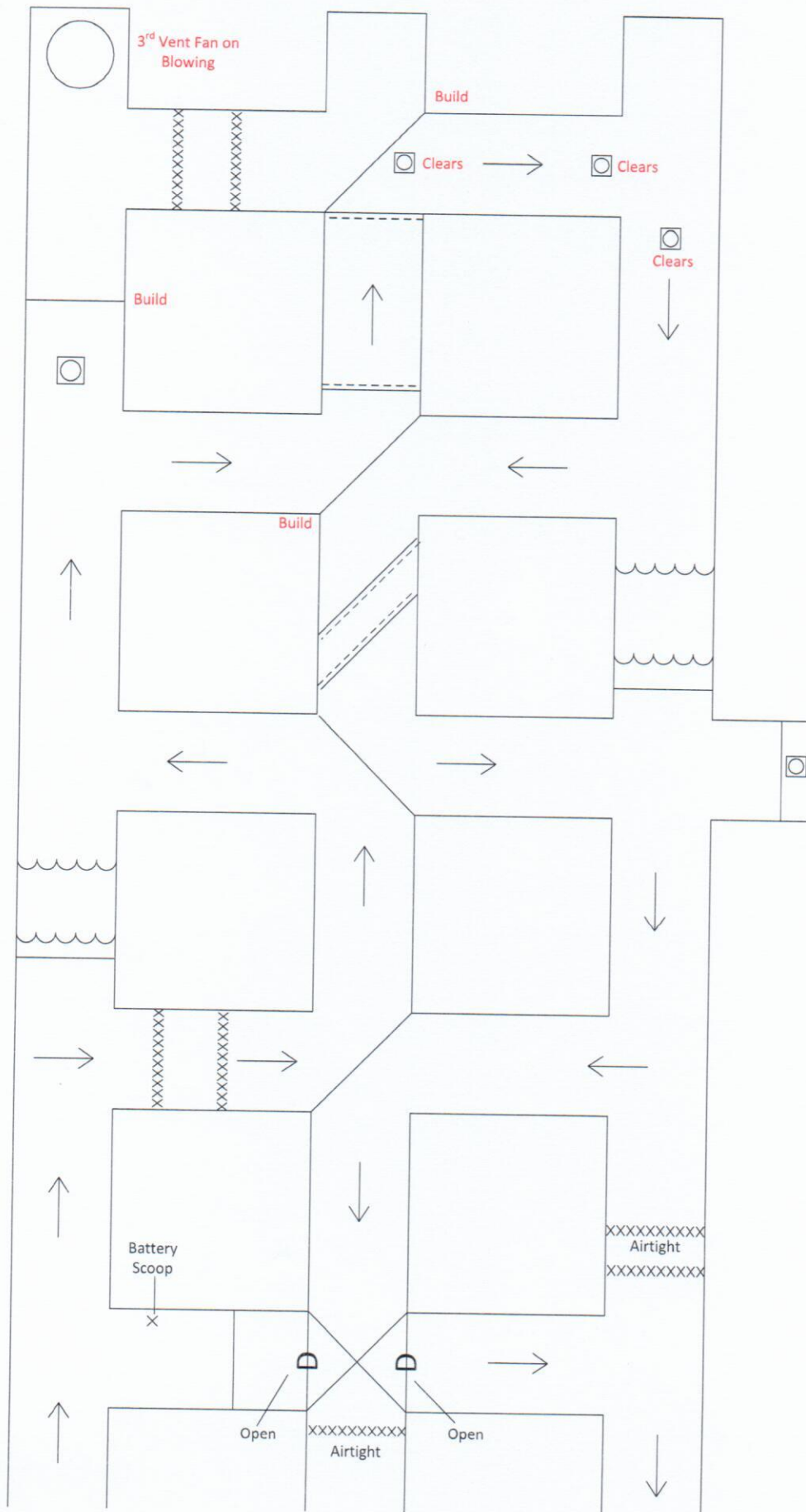




2<sup>nd</sup> Vent Change



3<sup>rd</sup> Vent Change



[illegible]



