

DIVISION OF MINE SAFETY
COMPLIANCE CONTEST DAY 1
APRIL 29, 2015

Thanks for answering our call for Help! This is what we know at the present time and if at anytime we get any more information, we will let you know.

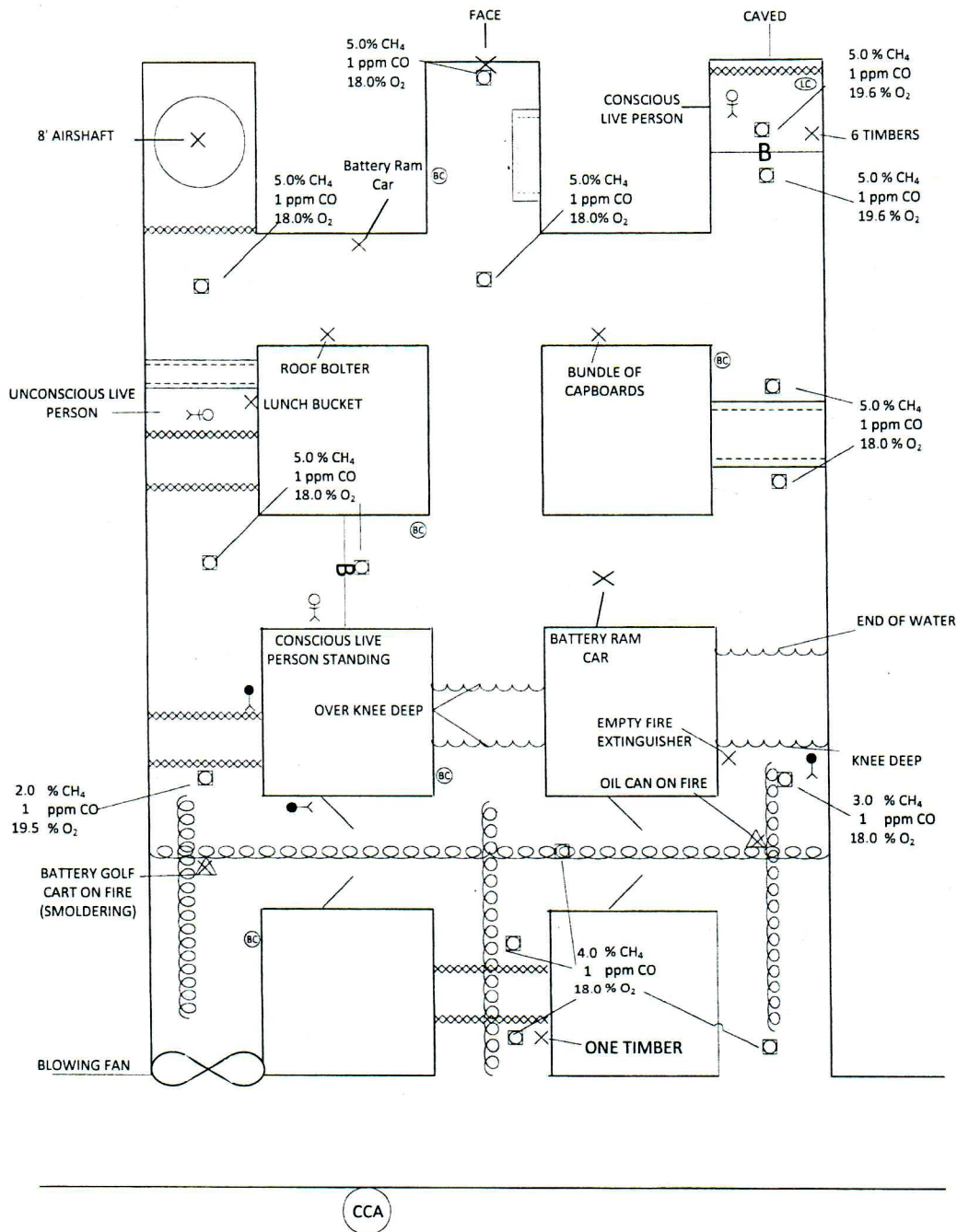
You are located on the surface of our new Wiley Coyote Highwall mine. Yesterday we cut into the new 8' airshaft in the present face of the # 1 entry. At 4 am this morning we had a 6 man crew including the mine foreman, to enter the mine to bolt up around the airshaft, and change the fan from exhausting to blowing and make the necessary changes to the underground ventilation. They were also supposed to set a pump at an area where we have a swag, that water accumulates in.

When I arrived this morning, the fan was off, but appears to have been rewired to convert it to a blowing fan. The pump cable has not been used and we don't know if the pump has been set or not. When I arrived I was unable to contact anyone inside so I started in. I hit smoke in the # 3 entry and a caved area in # 2 entry and the fan is setting in the mouth of # 1 entry. That is when I called for professional help. The mine maps are up to date, the fan is off, but my electrician has checked and thinks it will start in the blowing only position by requesting to energize or de-energize it by contacting the command center. We have had a lot of problems with water and the roof since we started here, but up to now we have been able to control it with fully grouted resin bolts and cable bolts. We haul coal with battery ram cars that we load with a 14 cm miner, and use a Roof Ranger bolter. The mine is walking height. An additional DMS mine rescue team is now here to serve as your back up, all regulatory agencies are here and emergency medical services are onsite. That's all we know right now, just please find our people!! Good Luck.

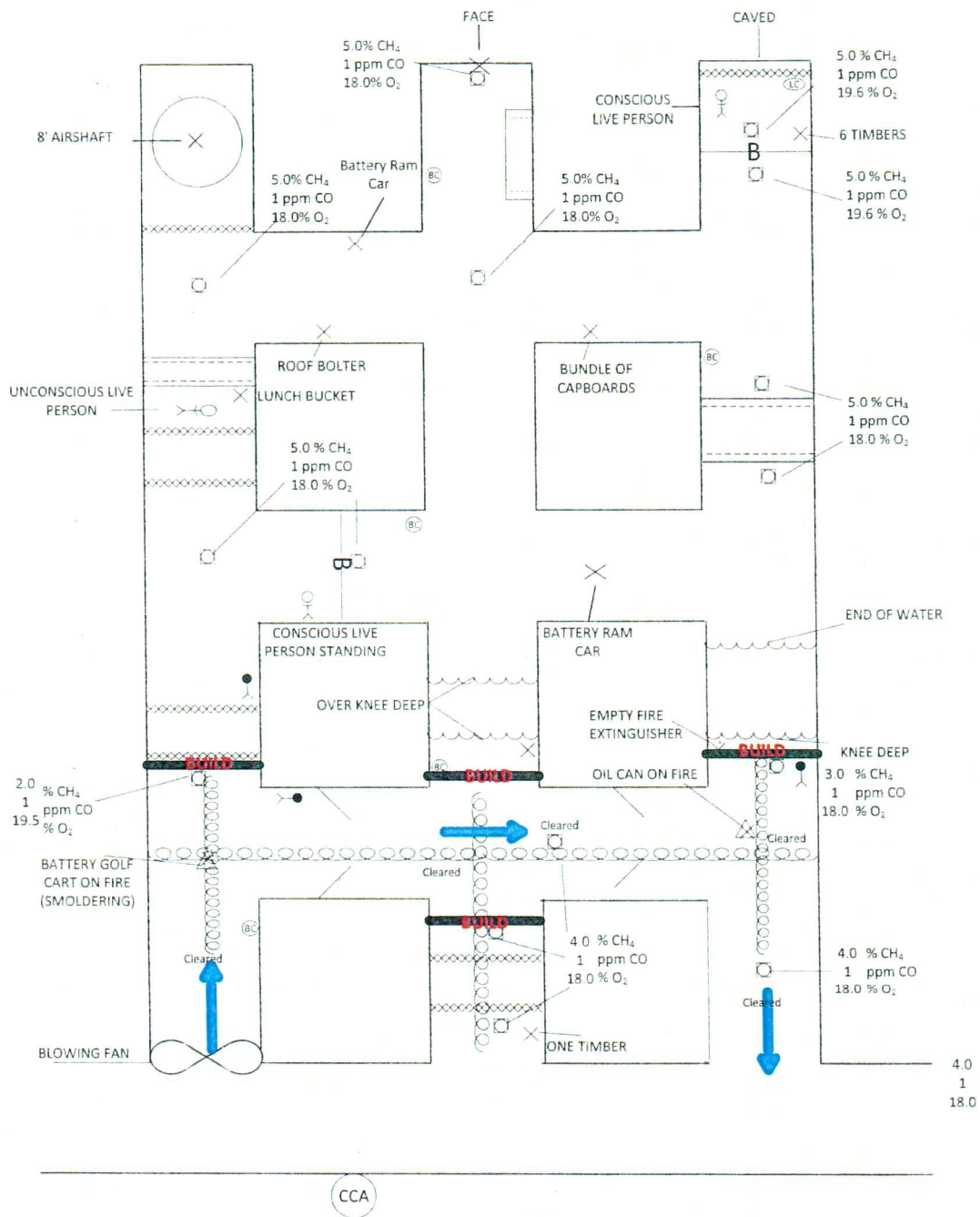
DMS MINE RESCUE CONTEST DAY 1

WRITTEN INSTRUCTIONS

- ACCOUNT FOR ALL MISSING PERSONS
 - BRING SURVIVORS TO THE SURFACE
 - FAN CAN BE STARTED AND STOPPED BY REQUESTING THE CIRCUIT BE ENERGIZED OR DE-ENERGIZED BY THE COMMAND CENTER.
 - DO NOT STALL THE FAN
 - MAP THE ENTIRE MINE IF IT CAN BE DONE SAFELY
 - COMMUNICATE ALL PERTINENT INFORMATION TO THE COMMAND CENTER ATTENDANT
 - YOU MAY ONLY TRANSPORT 2 BRATTICE CLOTHS AT A TIME.
-

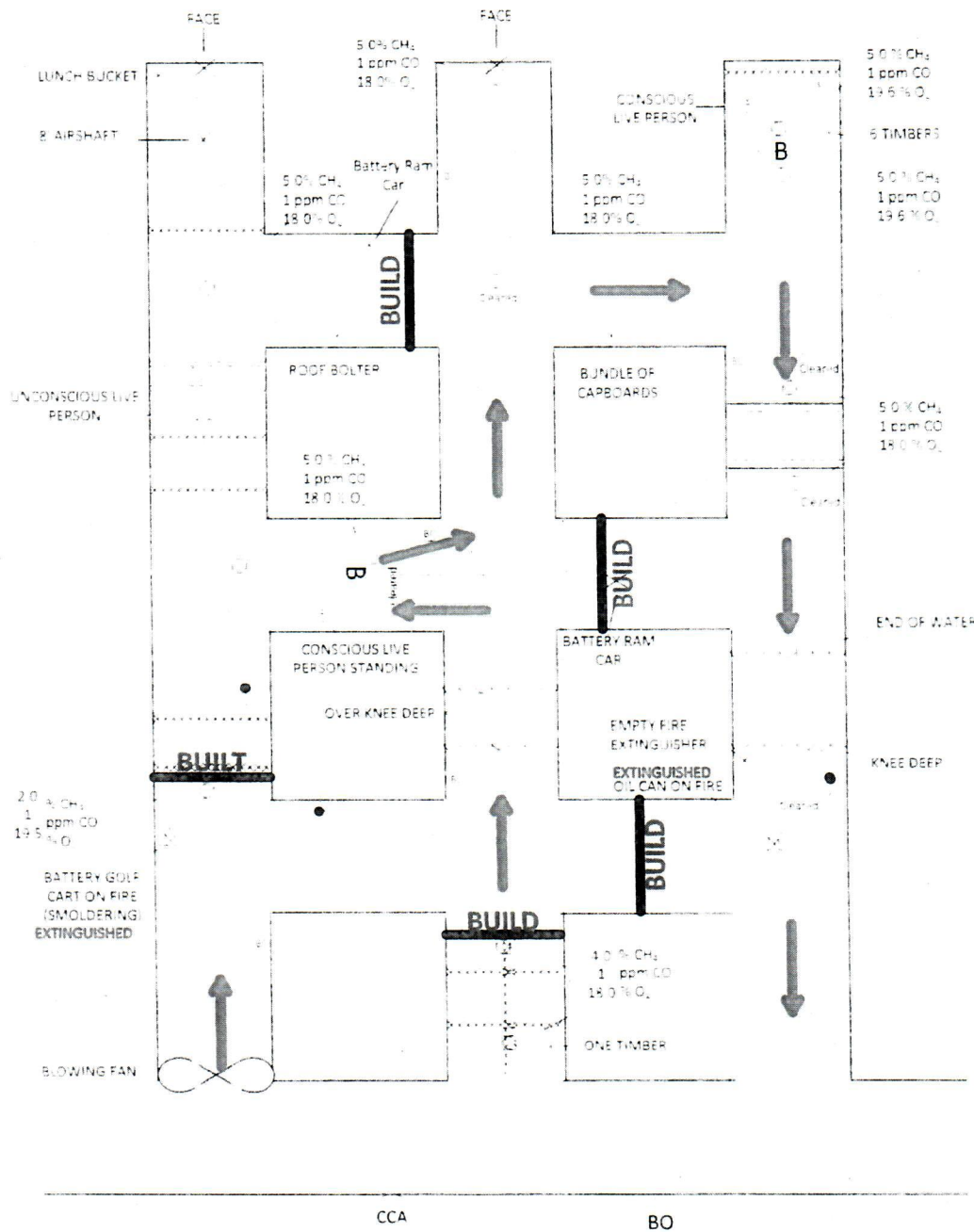


DIVISION OF MINE SAFETY
COMPLIANCE CONTEST DAY 1
APRIL 29, 2015



DIVISION OF MINE SAFETY
COMPLIANCE CONTEST DAY 1
APRIL 29, 2015

1st VENTILATION



DIVISION OF MINE SAFETY
COMPLIANCE CONTEST DAY 1
APRIL 29, 2015

2ND VENTILATION