

# 2015 ENERGY EXPO

Thursday, October 8<sup>th</sup>



Renewable Energy



Division of Mined Land Reclamation

To register for  
Exhibitor Space  
contact

Tarah Kesterson, DMME

[tarah.kesterson@dmme.virginia.gov](mailto:tarah.kesterson@dmme.virginia.gov)

(276) 523-8146

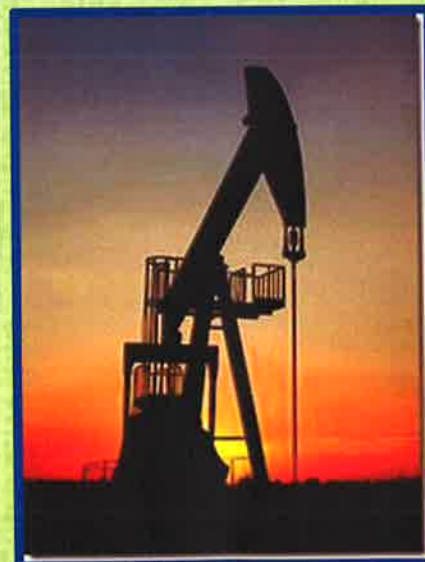
Ridgeview Middle School  
Clintwood, Virginia 24228



Mine Rescue Contest



Career Opportunities



Gas & Oil



## STATEMENT

---

I am \_\_\_\_\_, Superintendent of the Hokie Top Coal Company #1 mine. Thank you for responding to our emergency. You are located underground at the fresh air base. This fresh air base was established a short time ago by a mine rescue team that was searching for survivors.

Yesterday evening a 3 person crew entered the mine to perform construction work in a new area of the mine that had been cut into an old mine. When the outside person had not heard from them in a while, she tried to communicate with them and was not able to make contact. She contacted the mine foreman and he immediately came to the mine. As he made his way toward the section, he encountered disrupted ventilation, high levels of methane, and low oxygen. He was forced to exit the mine, notify the agencies, and notify mine rescue teams.

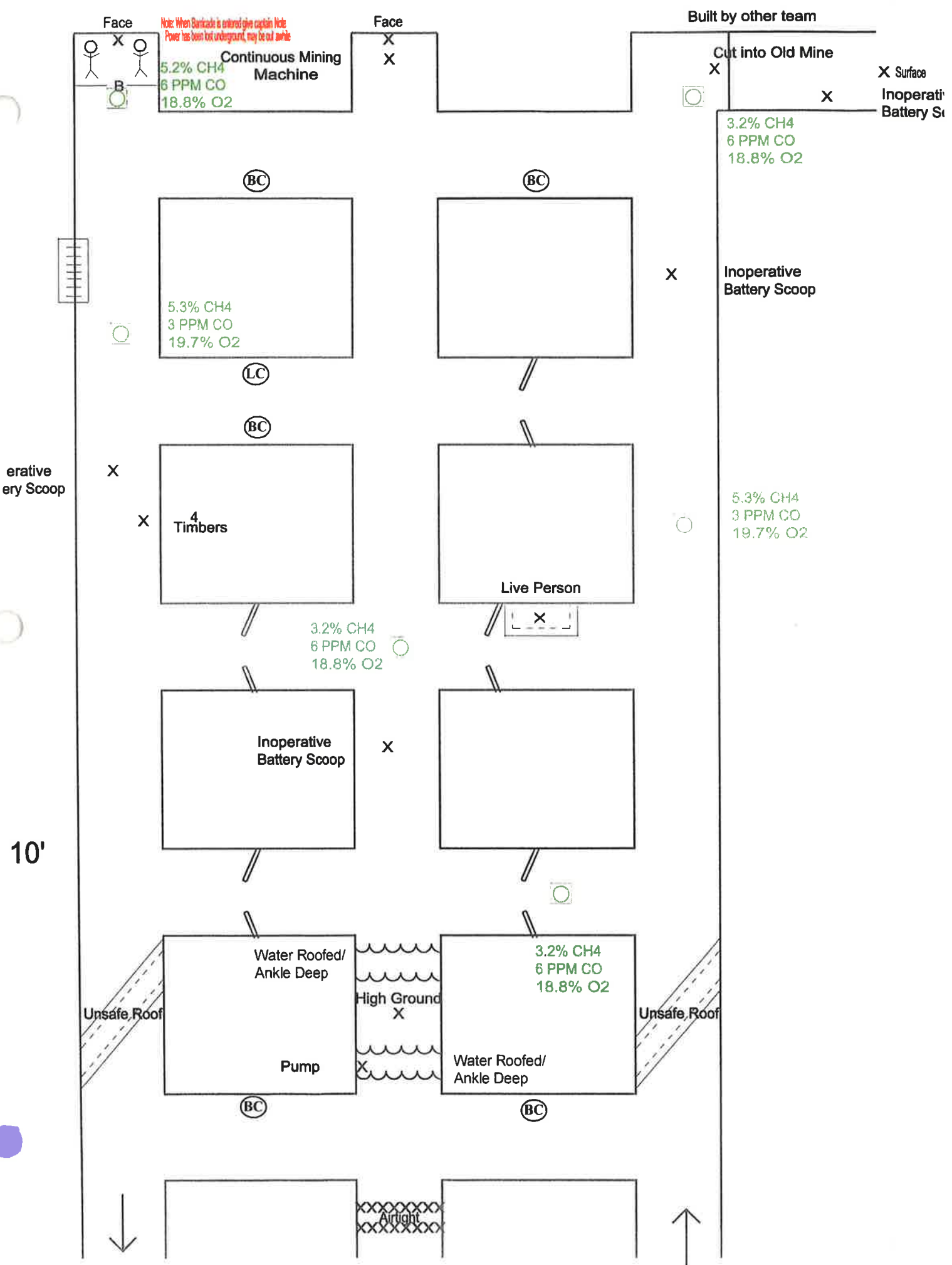
The miners were assigned to clean up, install additional roof support, and to pump water from the section. The mine is ventilated by a blowing fan that can not be stopped or reversed. The air is intaking up #3 entry, traveling across the fresh-air-base, and exiting the #1 entry. All mine power has been disconnected. Other mine rescue teams have safely explored the old mine from the surface to the connection and found that entire area to be safe.

We will have a back up team ready if you have an emergency but they will not be able to perform any work in your area.

## PROBLEM

---

- ACCOUNT FOR ALL MISSING MINERS
- WHEN PUMP IS REMOVED OR CUT OFF, WATER WILL RETURN TO THE STATE FOUND IMMEDIATELY
- THERE IS A 70 MINUTE TIME LIMIT AND YOU WILL RECEIVE A 10 MINUTE WARNING



Face

Note: When Baricade is entered give captain Note  
Power has been cut underground, may be out awhile

Face

Built by other team

Continuous Mining Machine  
5.2% CH4  
6 PPM CO  
18.8% O2

Cut into Old Mine

3.2% CH4  
6 PPM CO  
18.8% O2

X Surface  
Inoperati  
Battery Scoop

BC

BC

5.3% CH4  
3 PPM CO  
19.7% O2

LC

BC

X

X

4 Timbers

Live Person

3.2% CH4  
6 PPM CO  
18.8% O2

5.3% CH4  
3 PPM CO  
19.7% O2

Inoperative  
Battery Scoop

X

Water Roofed/  
Ankle Deep

Pump

BC

High Ground  
X

3.2% CH4  
6 PPM CO  
18.8% O2

Water Roofed/  
Ankle Deep

BC

Unsafe Roof

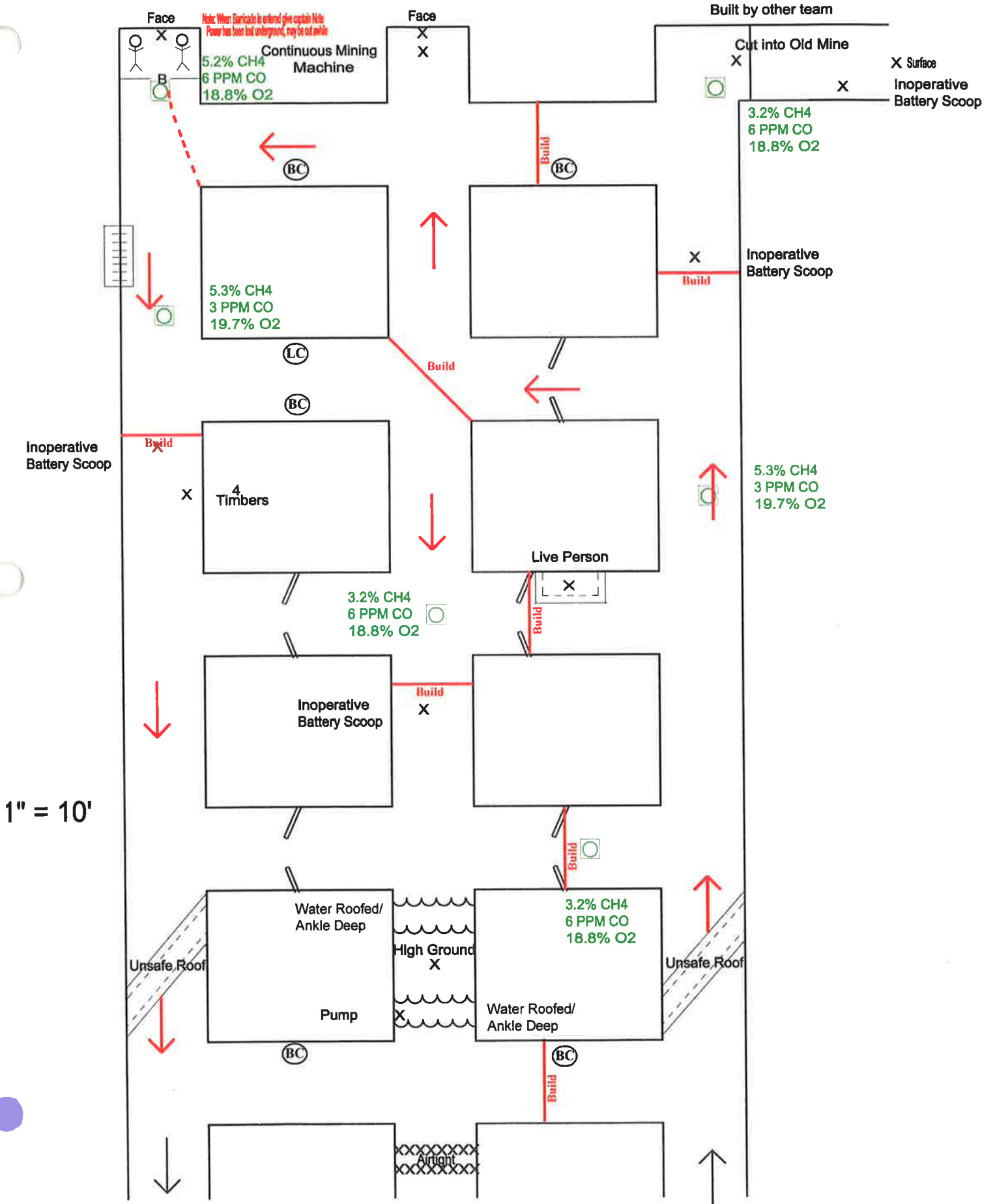
Unsafe Roof

Airtight

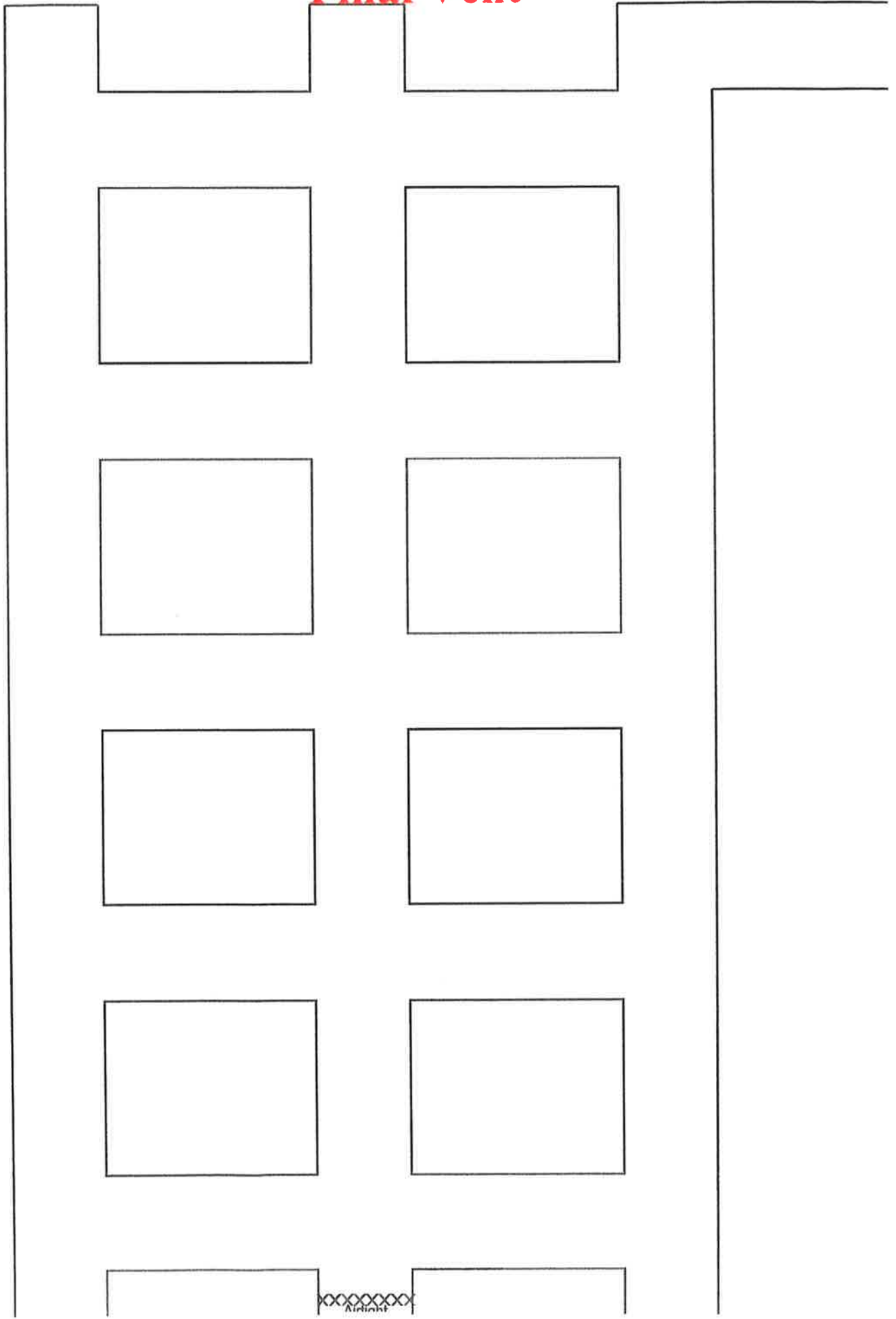
erative  
ery Scoop

10'

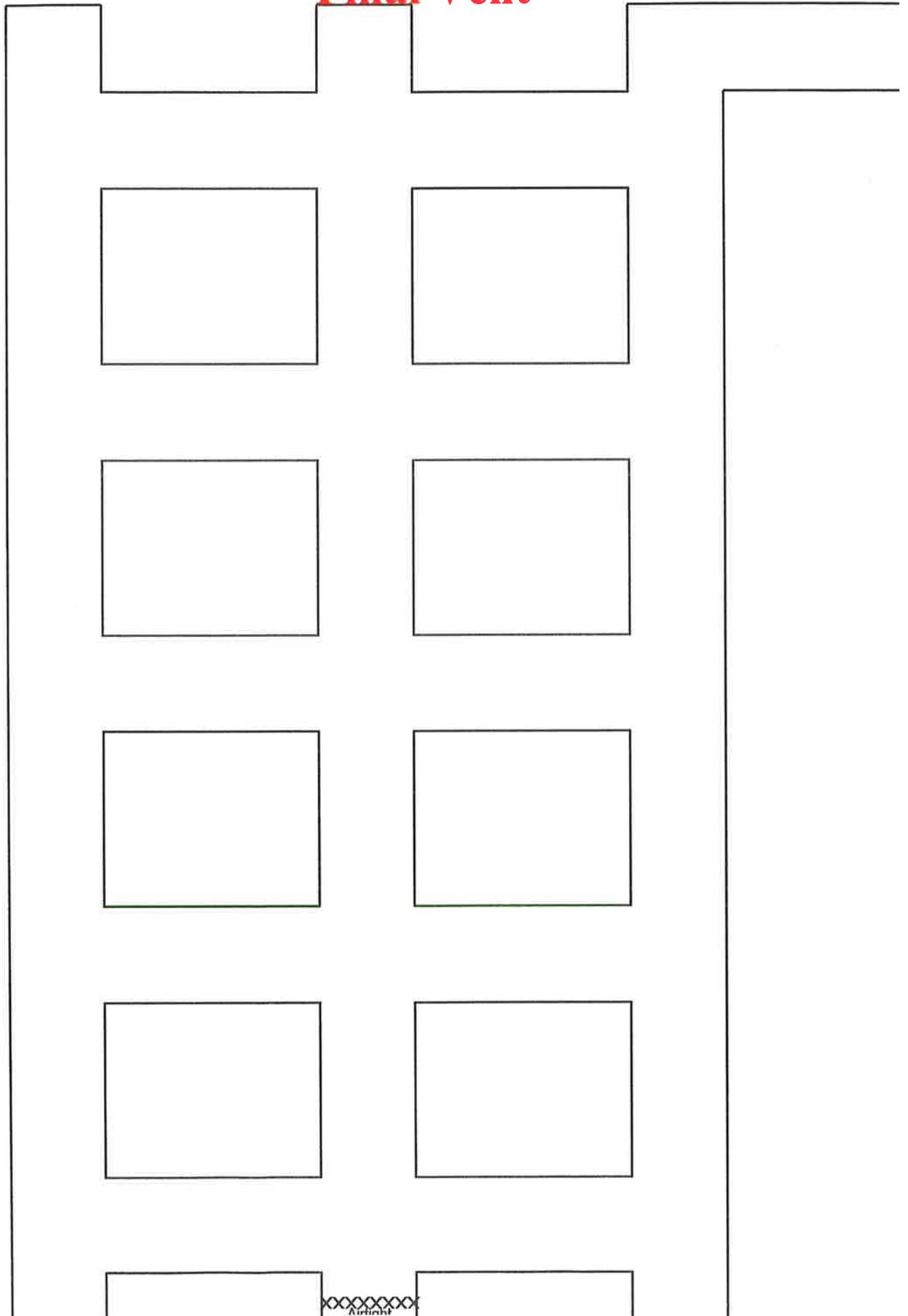
# 1st Vent

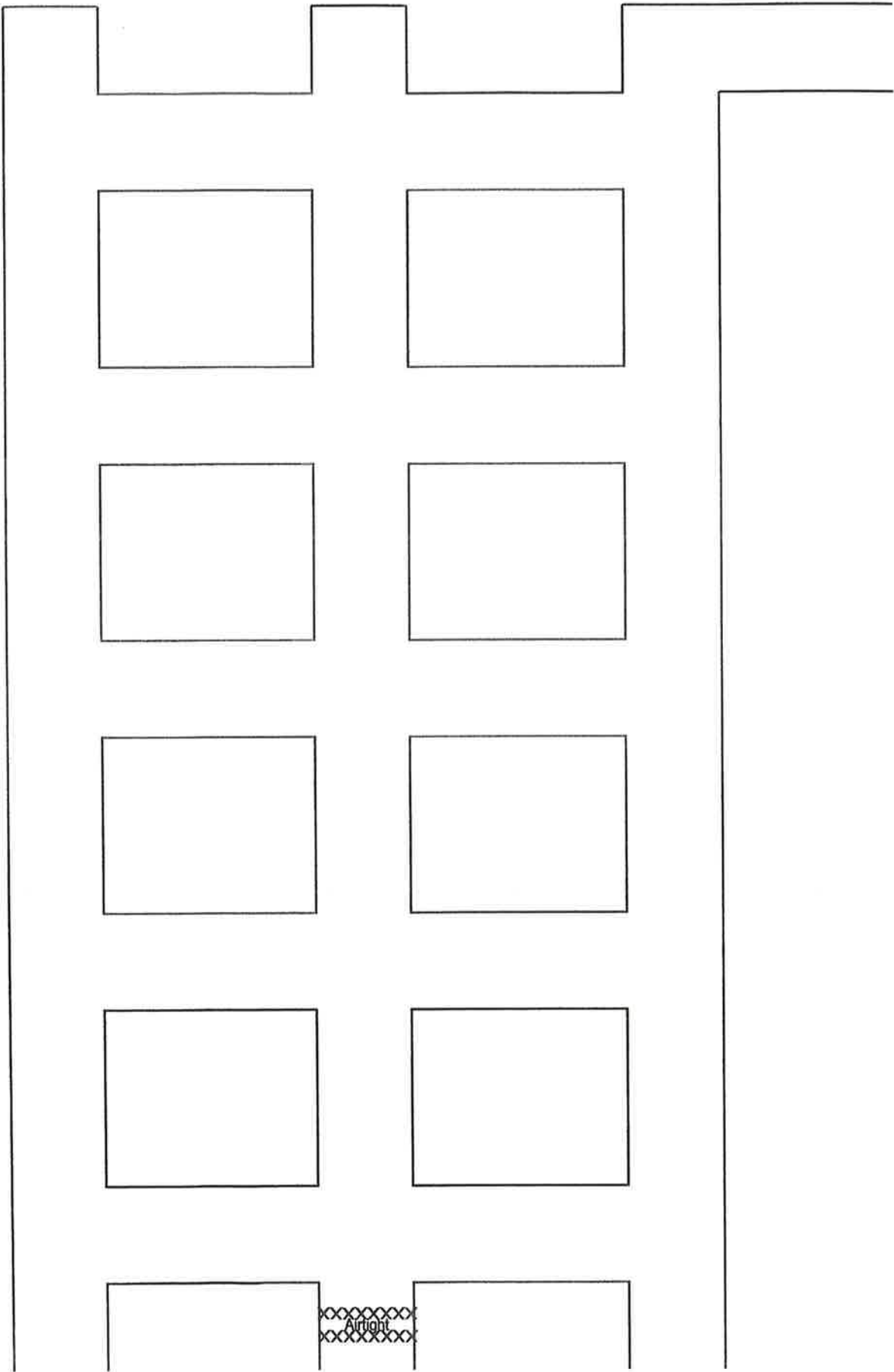


# Final Vent

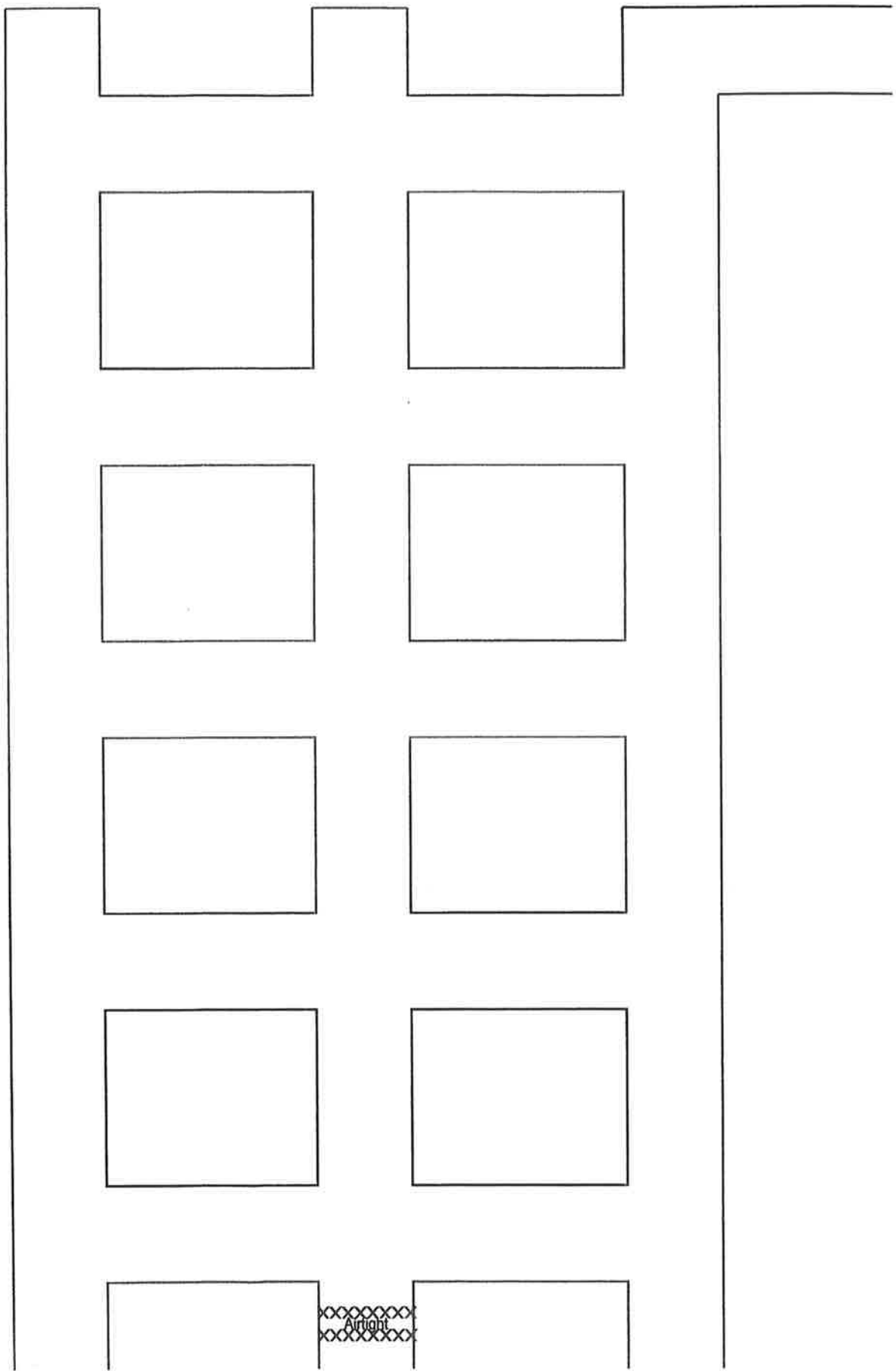


# Final Vent

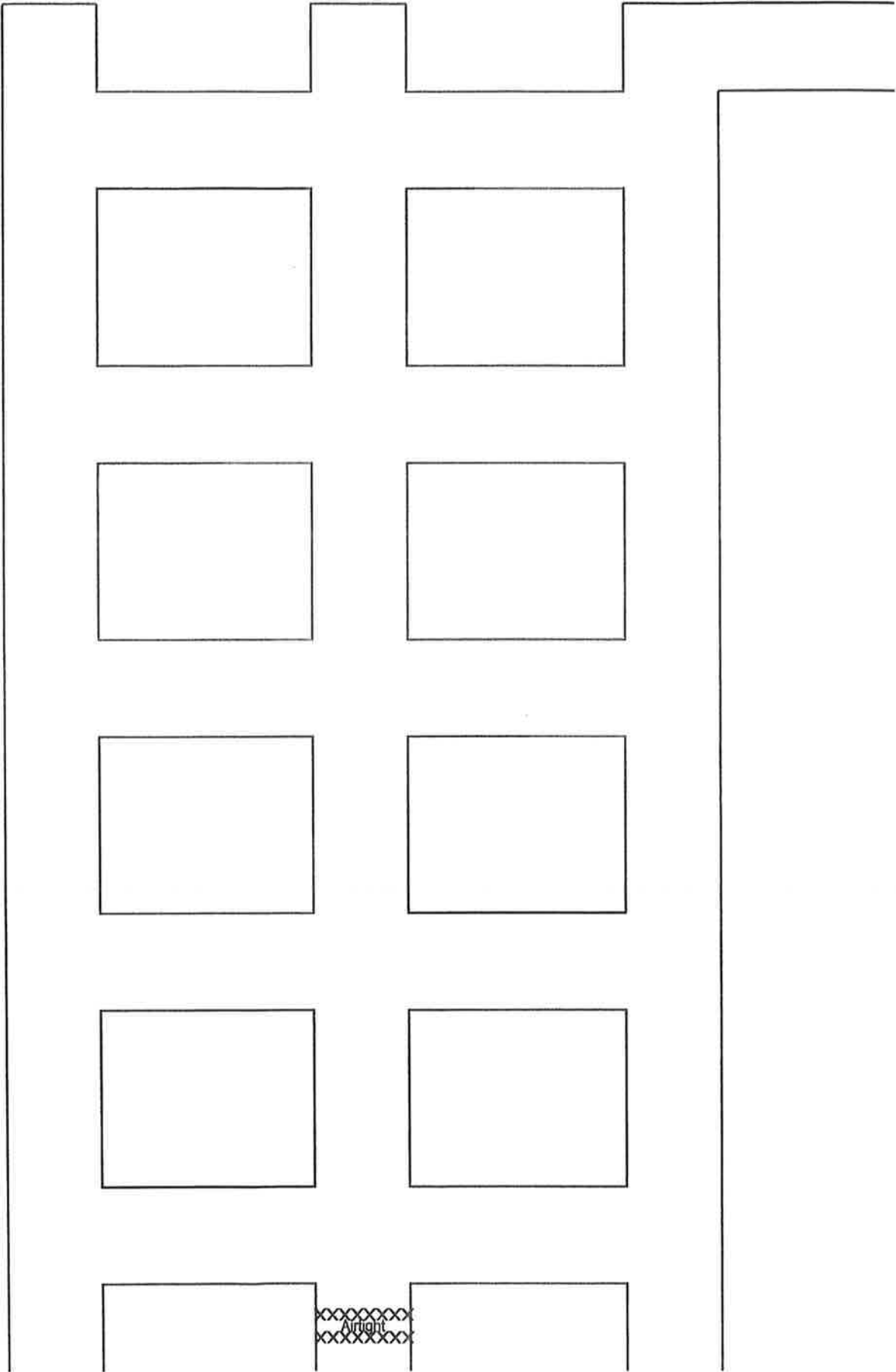


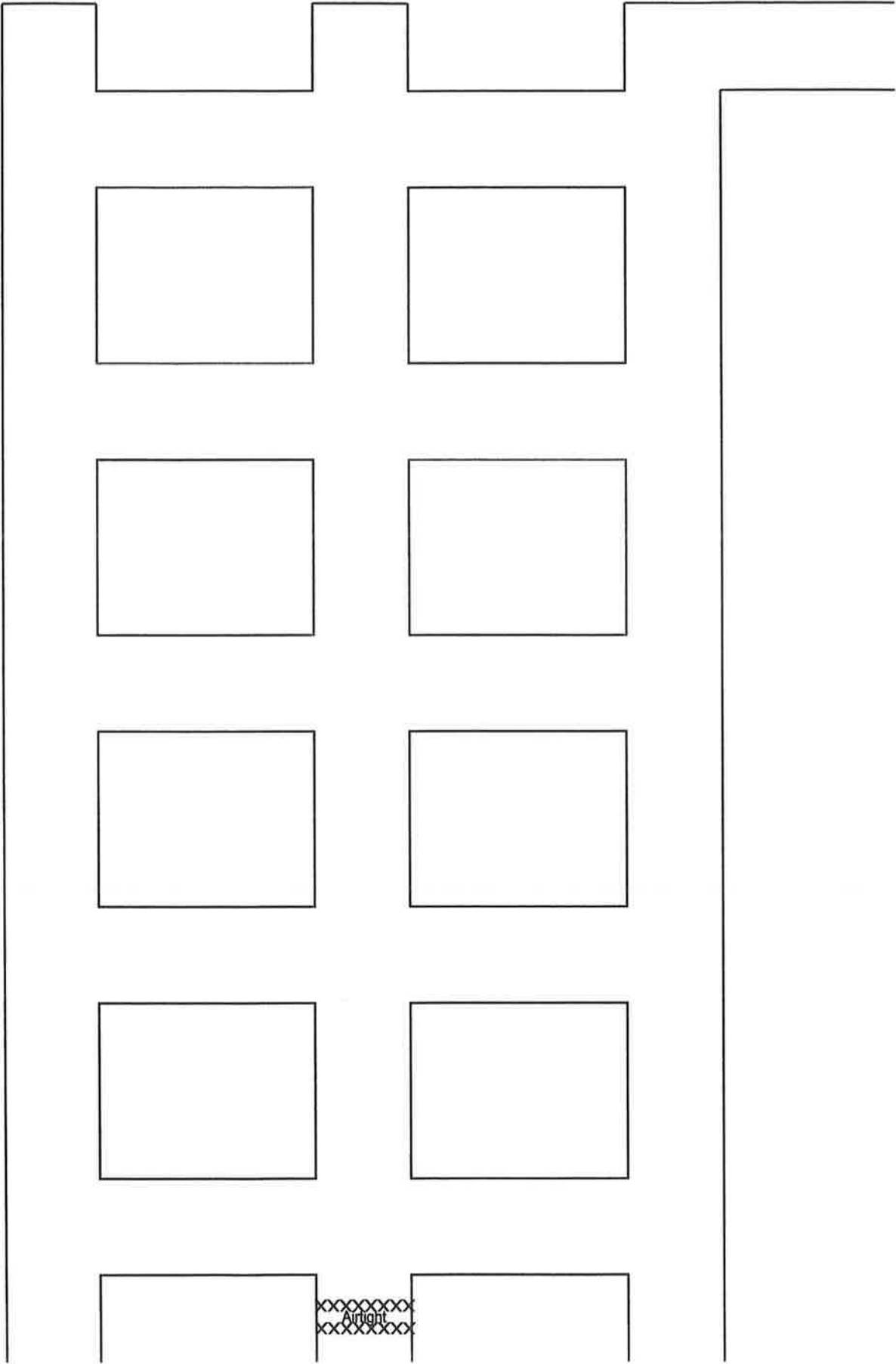






Amort





○ Butch Jones: Help!  
Help! I only made it  
through three quarters  
of the shift.

○ Frank Beamer: Help!  
Help! I thought this was  
an exhibition mine.

●

Note: Power has been  
lost Underground, May  
be out awhile