

# 37<sup>th</sup> Annual Rocky Mountain

## Mine Rescue Contest

### Price Utah

#### Statement

Welcome to the Nine Mile Mine, we appreciate you coming to help.

Last night a maintenance crew of three miners went in the mine, the responsible person on the surface received a call from the section stating there was a scoop on fire and they were barricading in the section.

At that same time we lost the main mine fan and have been repairing it. We now have it ready to run but have not started it. It can be started when you are ready but cannot be turned off once running.

The mine map is not up to date. We are on a full roof bolt plan but still have areas of unsafe top.

We are a small mine and have no resources so we hope you can help us. We have a train ready to load and need to start mining as soon as possible. So anything you can do to get us going would be appreciated. We will give you one hour and 15 minutes to do the problem. We will also give a bonus check to you if you can get us going.

Thanks For coming to our aid.

37<sup>th</sup> Annual Rocky Mountain  
Mine Rescue Contest  
Price Utah

Problem

Explore the entire mine if it can be done safely.

Bring all survivors to the Fresh-Air Base.

You will be given a one minute warning before the time limit expires.

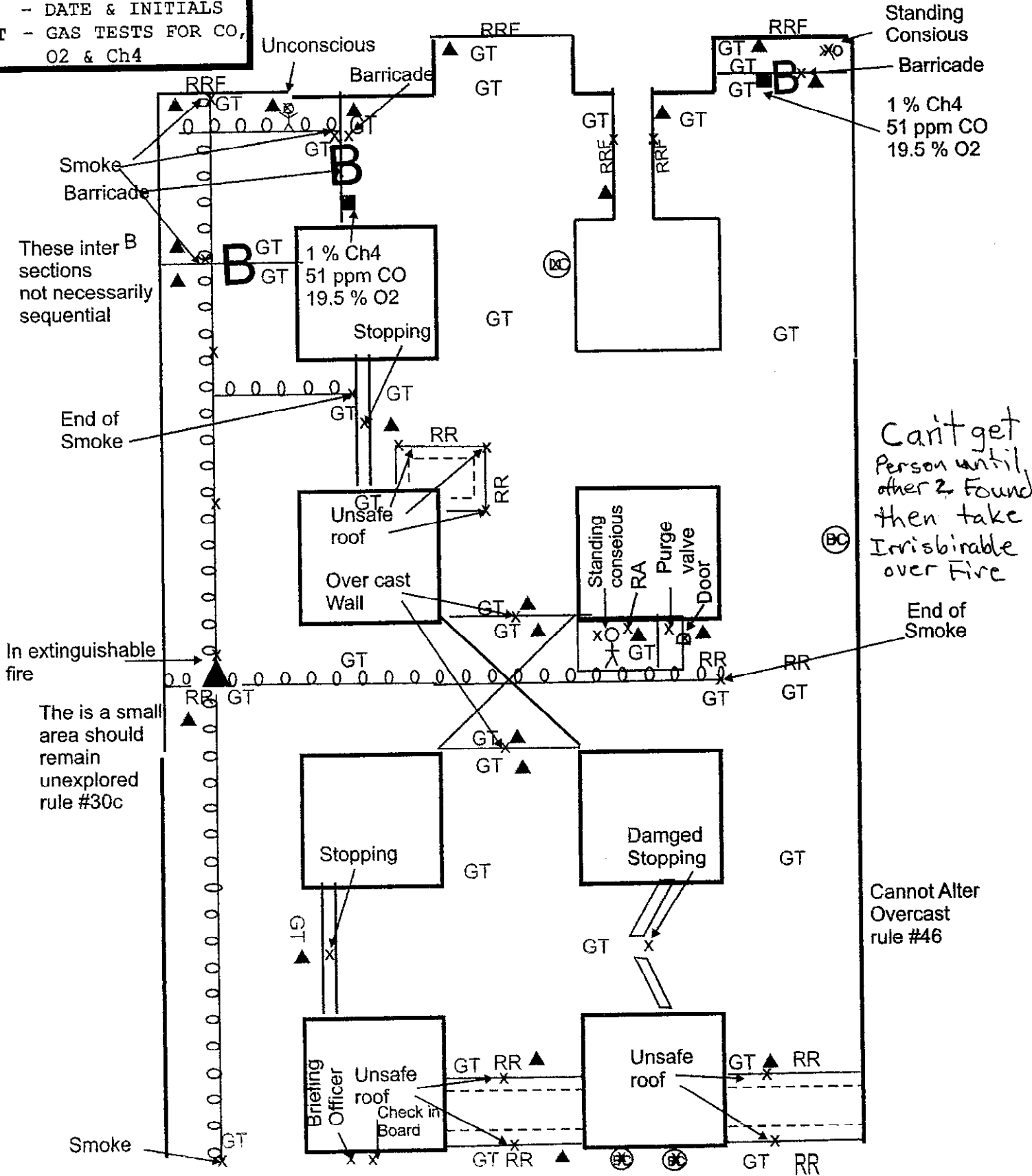
# INDEX

RR - ROOF & RIB TEST

RRF - ROOF, RIB &  
FACE TEST

▲ - DATE & INITIALS

T - GAS TESTS FOR CO,  
O2 & Ch4



Can't get Person until other 2 Found then take Irresistible over Fire

Cannot Alter Overcast rule #46

End of Smoke

These inter B sections not necessarily sequential

End of Smoke

In extinguishable fire

The is a small area should remain unexplored rule #30c

Smoke

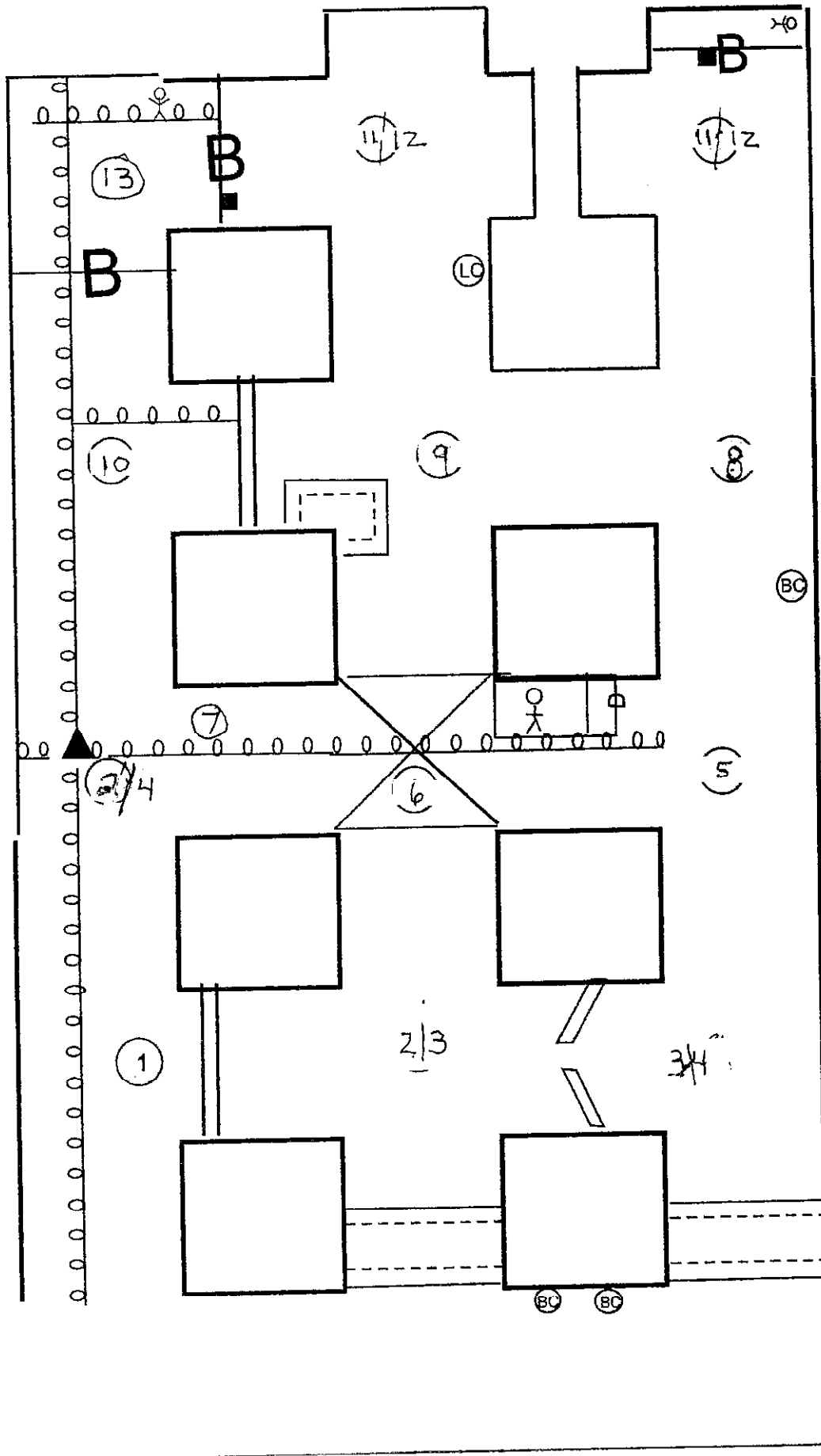
Standing Consious

Barricade

1% Ch4  
51 ppm CO  
19.5% O2

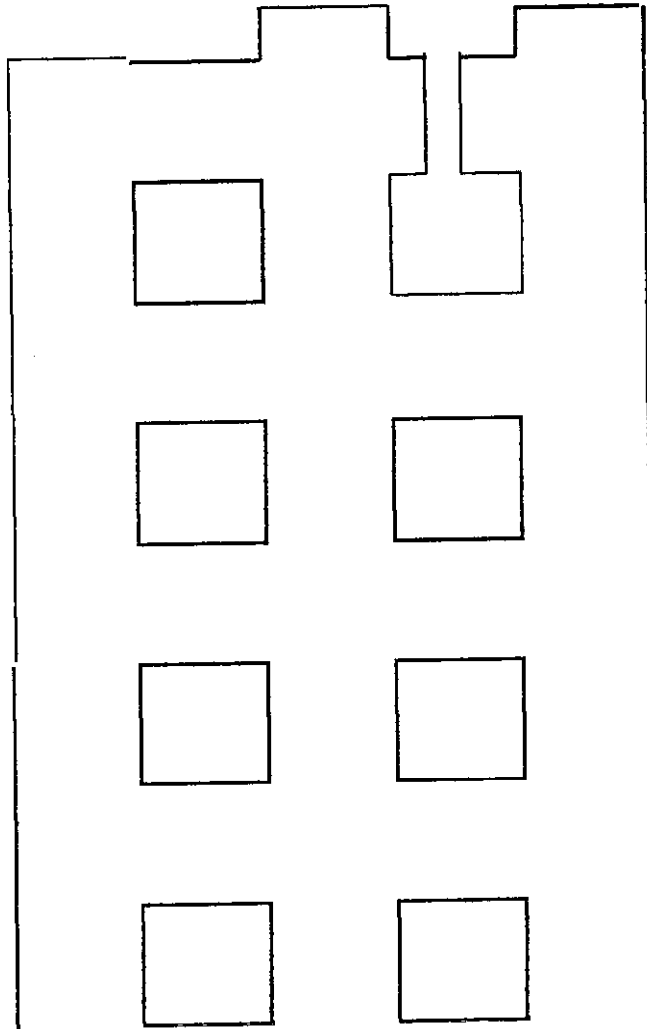
End of Smoke

# Team Stops Map



# TEAM MAP

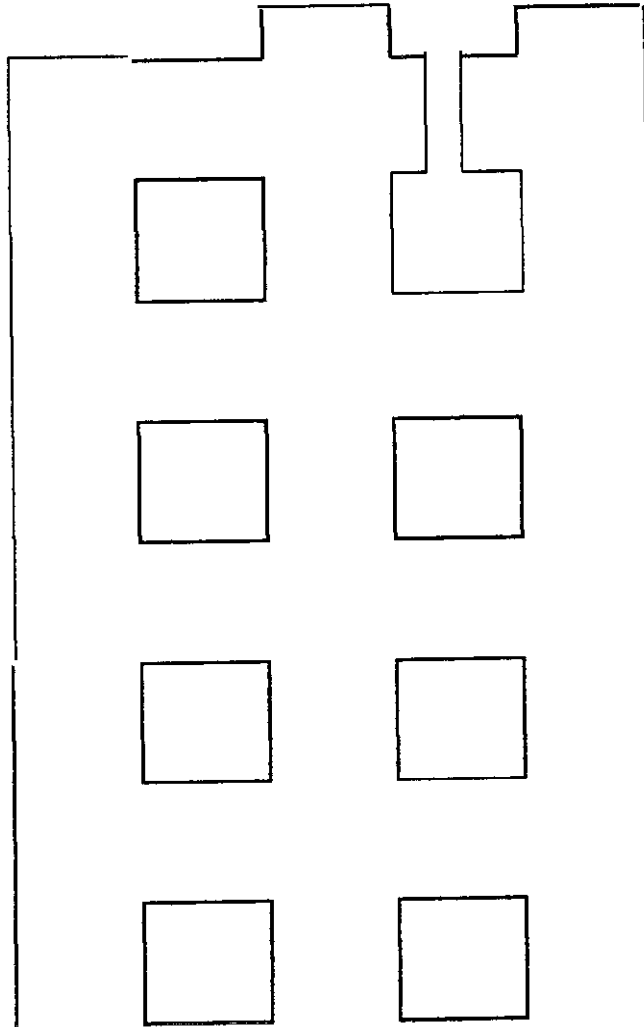
- SCALE 1" = 10'



Blowing Fan

---

# BRIEFING OFFICE MAP - SCALE 1"=10'



Blowing Fan

# JUDGES VENT/FINAL MAP

