

STATEMENT

I am _____ Superintendent of the New Frontier Coal Company. You are at the TK #9 Mine, thank you for responding. You are located at the fresh air base in the 1st left unit off the North main section. This area is being developed for future ventilation purposes.

At 6:00 am this morning a six man crew entered the unit to clean and do set-up work. Shortly after 7:00am one of the men called on top and reported smelling smoke. He said he was going to go to the RA if he could find it. That was the last communication we had with any of the crew.

We ventilate using an exhausting fan that is running. It can be reversed but not stopped or stalled. We also have an airshaft in the #2 entry up towards the head of the 1st left unit which can be used if needed. It has a door at the top that is closed but can be opened by asking permission.

The State Mine Rescue team has explored up to this FAB and according to yesterday's mine map, we should be within 4 Xcut's of where the men would have been working. A contract MR team is here to serve as your backup. All proper agencies have been notified.

We know you are highly qualified and one of the best prepared mine rescue teams in the industry. We appreciate what you do. Please find our men.

Thank You and Be Careful

PROBLEM

EXPLORE ALL AREAS WHERE SAFE TO DO SO.

FIND ALL MISSING AND BRING SURVIVERS TO THE FAB.

LEAVE MINE BAREFACED WHERE POSSIBLE.

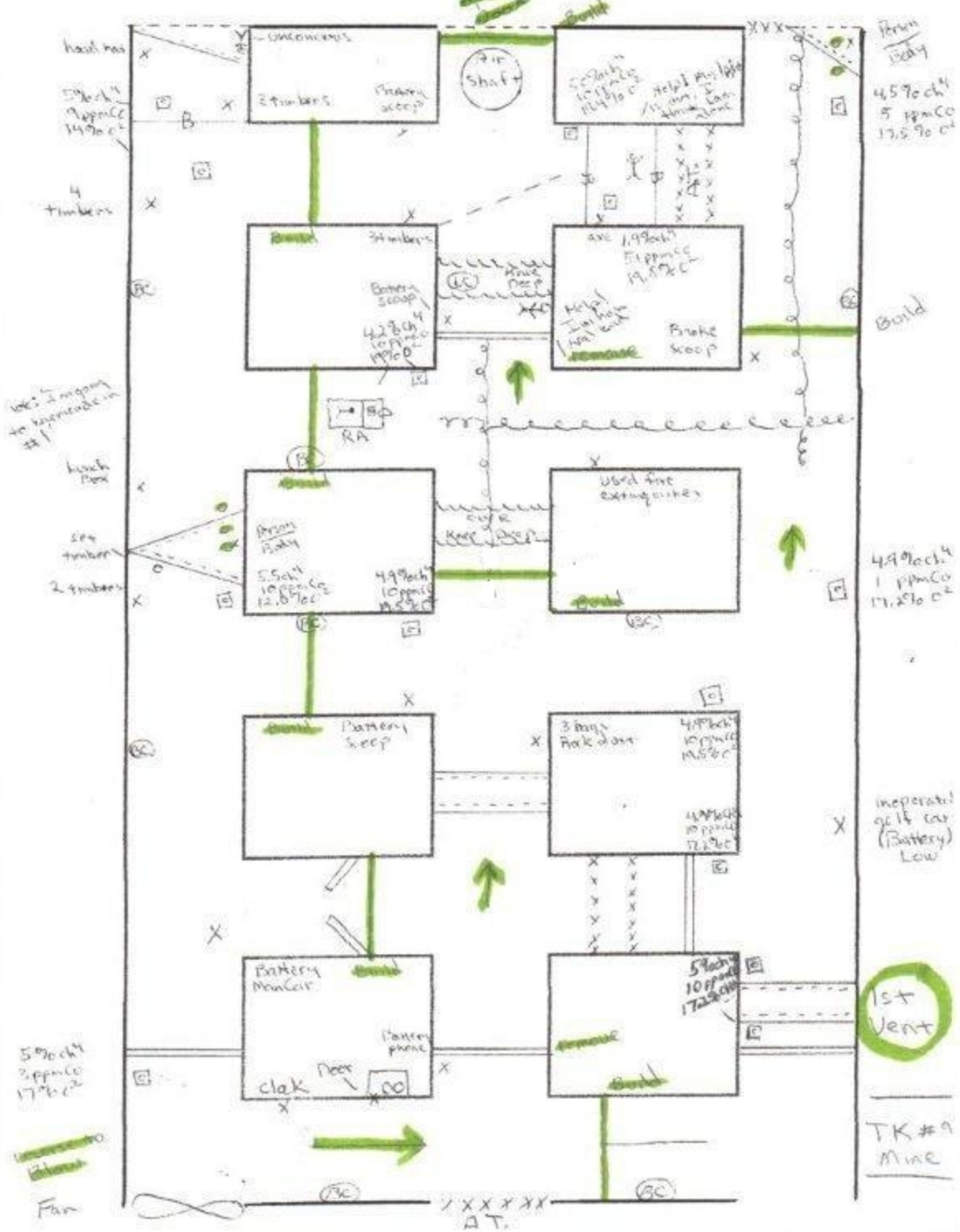
Report to superintendent how many persons accounted for and areas not left barefaced.

KEY POINTS

- 6 missing.
 - Need at least 3 timbers to reach person in unsafe in #1.
 - After TS #9 team must follow contaminant in #3. Need to use 2 timbers to ID person.
 - No response at RA, team does not have to ventilate at this time.
 - After TS #11 team must prop to person in unsafe in #1.
 - TS 12 team is tied to person in barricade but must take person in entry out first. Must put app on person before leaving and maintain airlocks.
 - Must now vent barricade between #2 and #3. Need to build behind shaft and ask to open door. Must reverse fan to blowing. Must airlock into barricade and put app on person to retreat.
 - Team needs to tie in backside of barricade between #2 and #3.
 - 2nd vent team must prop through unsafe, move phone and reverse fan back to exhaust.
 - Team may now enter either barricade or RA.
 - Withdrawal inby barricade in #1.
- 5 persons accounted for. (4 if team does not enter RA)

AREAS NOT LEFT BAREFACED

- unsafe in #3 inby FAB
- caved in A xcut
- smoke inby C xcut in #3
- unsafe in #1
- smoke and water in #2 between B and C xcuts
- inby withdrawal in #1
- in barricade between #2 and #3
- behind barricade if team did not explore before withdrawal



45% O₂
5 ppm CO₂
13.5% O₂

49% O₂
1 ppm CO₂
17.2% O₂

incorporated
of 14 car
(Battery)
Low

1st Vent

TK #9
Mine

hard hat
EPA
5% ch
9 ppm CO
17.8% O₂

4 timbers

Use 5 timbers to barricade in #1

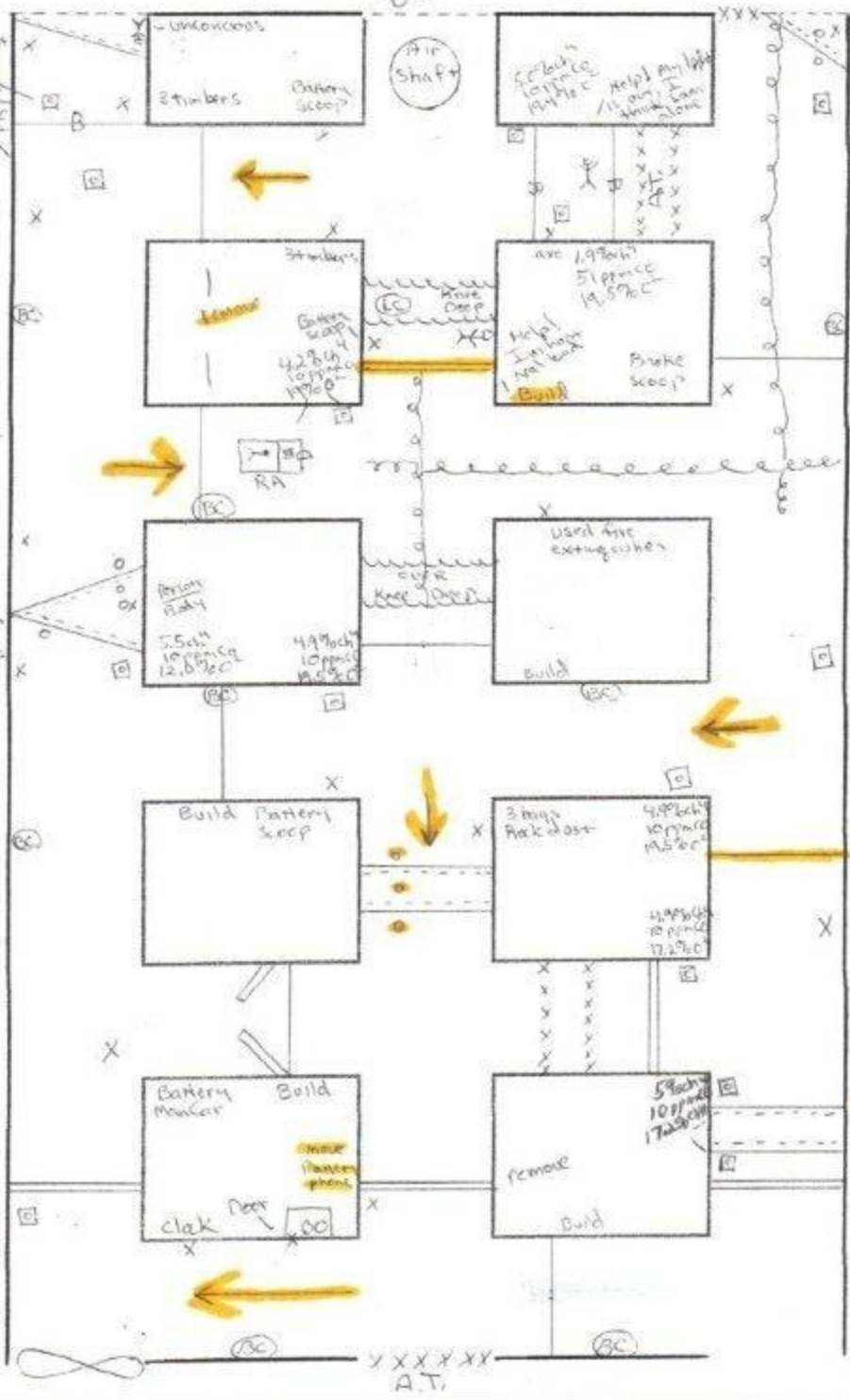
hush box

Set number
2 timbers

5% ch
3 ppm CO
17.8% O₂

Reverse to exhaust

Fan



Person
Body
4.5% ch
5 ppm CO
17.5% O₂

4.9% ch
1 ppm CO
17.2% O₂

improrate
get cart
(Battery)
Low

2nd Vent

TK #9
Mine

